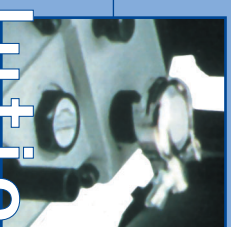
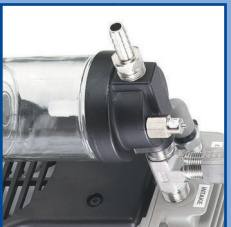


Javac UK Limited  
6 Drake Court, Britannia Park,  
Middlesbrough TS2 1RS  
United Kingdom

T: 01642 232880  
F: 01642 232870  
E: sales@javac.co.uk  
W: www.javac.co.uk  
www.javac.com.au

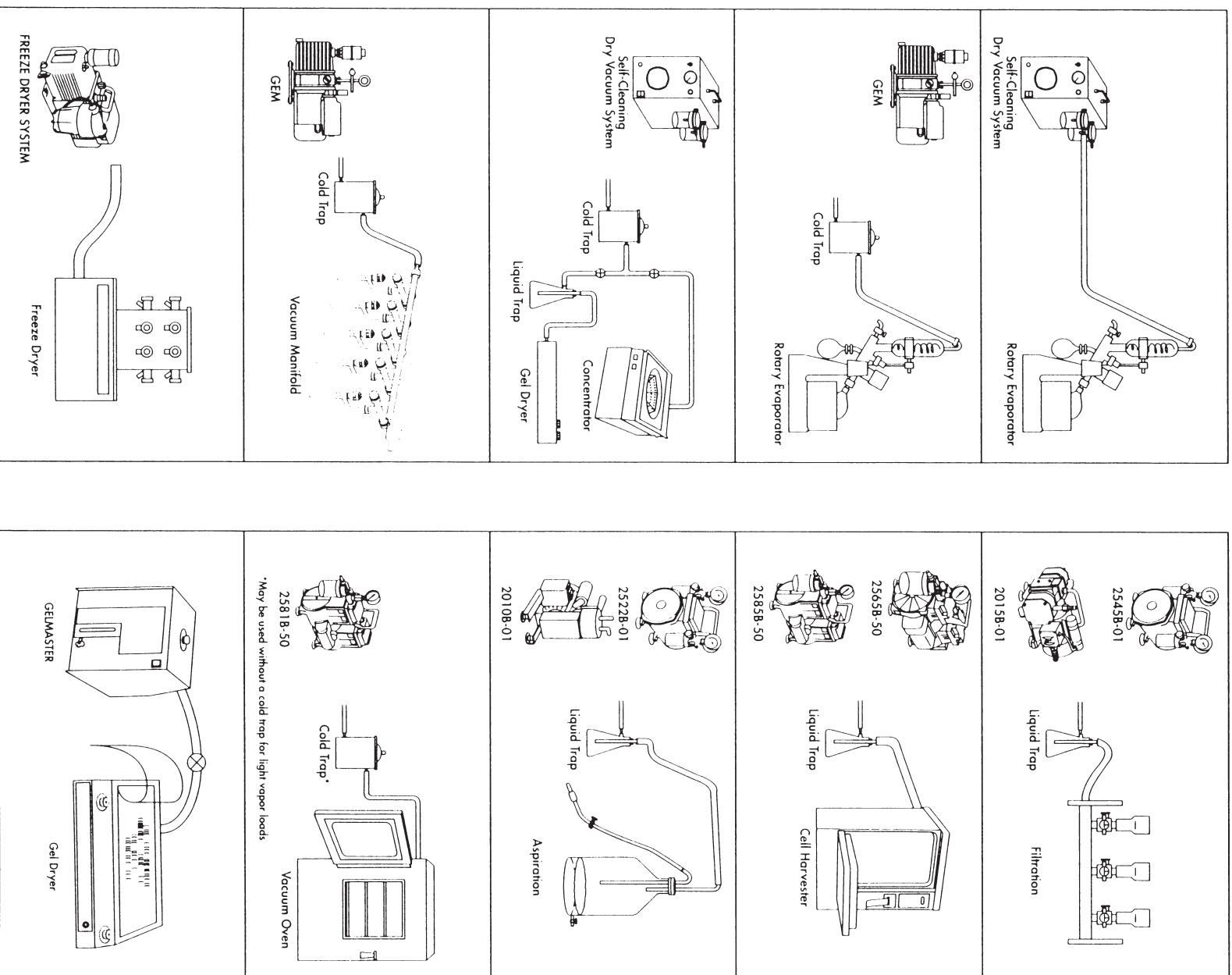


VACUUM SOLUTIONS

Available From:-



# Typical Set-ups for Lab Applications



## KF Fittings, Clamps and Hose tails

We can supply any KF fittings in aluminium or stainless steel including the new KF Multi-PAC. This is a universal kit designed to connect up new vacuum pumps to various equipment including hose connections and oil mist eliminators.

Description: 2KKFC25, 2KFF016, 2KFF025, 2KKFC16, 1KFFH16/7, 1KFFH25/10, 1KFFB25, 1KFFB16, 1KFFR25/16, 1KFFR25/10, 1KFFB25, 1KFFB16, Part number: KMFP-1

## Vacuum Gauges

### PIA 1

Pirani vacuum gauge with bar graph read out for rough to fine measurement. Supplied with 3m of cable and a KF16 head connection.

Range: 1000 to 0.001 mbr  
Accuracy: <20%  
Display: 30 segments  
Recorder output: 0-10V  
Dimensions: WXHXD: 96x48x118

Part number: 600001

### PIA 100

Pirani vacuum gauge for measuring and controlling rough to fine vacuum. Easy to program keypad. Supplied with 3m of cable and KF16 head connection.

Range: 120 to 0.001 mbr  
Accuracy: <20%  
Display: LED in mbr/torr  
Recorder output: 0-10V  
Dimensions: WXHXD: 98x98x152

Part number: 600011

### PILOT

Hand held Pirani vacuum gauge with digital display. Connection is by KF16 direct to the unit. Incorporates and auto cut off to save battery life.

Range: 1000 to 0.001 mbr  
Accuracy: 10%  
Display: Liquid crystal  
Power source: 9V battery  
Weight: 200 gram

Part number: 710202-G1

### CAPSULE 19621

Capsule dial gauge for general vacuum measurement. Suitable for rough or regulated vacuum.

Range: 150 to 0 mbr  
Accuracy: 15%  
Display: Mbr  
Size: 100mm  
Connection: ?" G x ? SAE

Part number: 9882476

### CAPSULE LAB

A range of high quality capsule dial gauges with jewel movement. These gauges are supplied in various scale sizes and are connected via a KF16 or brazed copper for panel mounting.

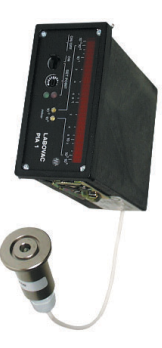
Model	Range	Display	Size	Connection	Part No
CR2	0-50	mbr	100mm	KF16/10mm	CR2-50
CR2	0-120	mbr	100mm	KF16/10mm	CR2-120

### COMPOUND 19801

A budget vacuum gauge featuring an adjustable maxi gauge pointer to indicate a predetermined value. The gauge also has an over pressure relief valve protection in case of system pressure.

Range: 1000 to 0 mbr  
Display: Mbr  
Size: 100mm  
Connection: ?" gauge

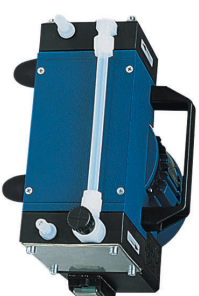
Part number: 9882474



## MPC301Z Teflon Diaphragm Pump

Full Teflon coated double stage pump designed for use with aggressive chemicals and suitable for use with rotary evaporators and vacuum concentrators.

Flow rate:	ltr/min	38
Vacuum:	mbar	<8
Weight:	Kg	7.8
Dimensions:	mm LXWXH	230x265x169
Part number:	4000481-14	



## MPC201T Teflon Diaphragm Pump

Full Teflon coated double stage pump with deep vacuum capability especially suitable for dehydrating DMF and other solvents in rotary evaporation and vacuum concentrators

Flow rate:	ltr/min	33
Vacuum:	mbar	<2
Weight:	Kg	10.3
Dimensions:	mm LXWXH	200x260x150
Part number:	400177-01	



## Oil Mist Eliminators

Exhaust filter for use with oil seal rotary pumps. Designed to eliminate any oil mist that is created during the evacuation process and return it back to the oil box. The filter elements are coalescing and can be replaced periodically when they become blocked.

To Fit:	Part No
Shark (1/2" BSP/M)	LF007
Gen (1/2" BSP/FM)	LF008
DD75-300 (KF25)	LF009
DD-DS40 (KF16)	LF010
Replacement Element (single)	LF011
Replacement Elements (old type, box 10)	LF005

## Inlet Traps

Fitted to the inlet of oil sealed rotary pumps to protect the pump from incoming contamination (Kleartrap) or to stop back streaming of oil vapour when the system has been under high vacuum for some time (Fonline trap).

Description	Part No
Fonline Trap (KF25inlet)	LF006
Kleartrap (12mm tube inlet, activated carbon element)	LF001
Kleartrap replacement element (activated carbon)	LK001-1

## Vacuum Pump Oil

These oils provide protection and performance for rotary vane vacuum pumps. They offer various viscosities and quality depending on the application, striking a balance between affordable regular oil changes and special protection.

Description (5ltr)	Part No
High Viscosity (DDL75-300)	V100
Medium Viscosity (DDL-DSL 40)	T46
Low Viscosity (Shark)	CV32/5
Technical White (DDL75-300)	TW100
High vacuum grease (50gr silicon)	L32.001

## PVC Wire Supported Vacuum Hose

This is a premium quality vacuum hose suitable for connecting vacuum pumps to equipment and machinery. Supplied in any length and costed by the metre.

Description	Part No
10mm ID	PVC10
12mmID	PVC12
19mmID	PVC19

## Refrigerated Vacuum Station

This station features a -55°C refrigerated cold trap with microprocessor control. The two stage vacuum pump only activates below -30°C protecting the pump and freezing effluent. The display allows both vacuum and temperature to be monitored and a built in four port manifold allows the unit to be shared between various applications. The new 150 ltr/min "Javac Shark" dual stage vacuum pump is included and provides a cost effective high vacuum source.

Recommended for aggressive applications. Molecular biology, vacuum concentrators and evaporators.

Flow:	litres/min	150
Vacuum:	mbar	<015
Temperature:	°C (approx)	-55
Ice Capacity:	Kg:	1.0
Compressor:	Hp:	0.5
Dimensions:	mm HWXD	1015x620x510
Part number:	RVS 150	



## Vacuum Tank System

This unit offers a quiet, regulated vacuum source that can be located under a standard laboratory bench and service up to 30 x vacuum taps. The oil free "Mob-L" piston pump is virtually maintenance free and the vacuum regulator has a wide adjustable differential making this unit extremely cost effective to run.

Recommended for aqueous applications. Teaching laboratories, bench top vacuum taps, water-jet replacement.

Flow-rate:	litres/min	170
Vacuum:	mbar (ultimate)	<80
Differential adjustment, mbar		500-0
Weight:	Kg	25
Dimensions:	mm HWXD	450x500x300
Part Number:	VTS 170	

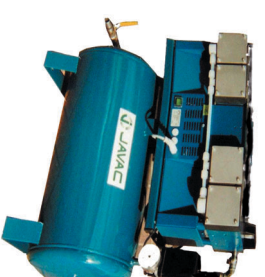


## Vacuum Tank System

This vacuum source is extremely robust and uses an eight head full Teflon diaphragm pump. It can be located under a standard laboratory bench and is virtually maintenance free. Able to withstand very aggressive applications without effecting performance it is suitable for up to 40 x vacuum taps and incorporates a vacuum regulator with wide adjustable differential for cost effective continual use.

Recommended for organic applications. Research laboratories, all general laboratory equipment and bench taps.

Flow rate:	litres/min	260
Vacuum, mbar (ultimate)		<80
Differential Adjustment		500-0
Weight:	Kg	35
Dimensions:	mm HWXD	(500x550x230)
Part Number:	VTS 260	



## Self-Cleaning Vacuum System

A unique medium vacuum source based on a full Teflon diaphragm pump. This unit offers a vacuum regulator and gas ballast as well as a self cleaning feature which will prevent cross contamination and prolong the life of the major components. The regulator and vacuum gauge allows for controlled vacuum, ideal for separating multi solvent media.

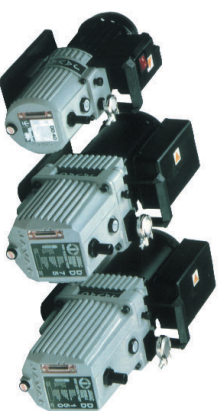
Recommended for aggressive and organic applications. Rotary evaporators, concentrators and Gel driers etc.

Flow Rate:	Litres/min	28
Vacuum:	mbar	<12
Gas Ballast		Yes
Weight:	Kg	12.7
Dimensions:	mm LXWXH	298x203x292
Part Number:	2025C-02	



## Javac Rotary Vane High Vacuum Pumps

A range of oil sealed high vacuum pumps specifically designed for applications where high vacuum is essential. These pumps will achieve one micron absolute and are used in conjunction with refrigerated cold traps and freeze driers. They can be supplied in two formats including standard of full Teflon coating. Several types of oil are available from standard to special protection and various grades can be specified depending on operating conditions. All pumps in the range have a gas ballast valve as standard, essential for keeping the oil free from water and other vapours that will reduce the vacuum and can damage the internals of the pump.



Description	Part No	Ltr/min	M/hr	Weight
Single stage	DSL40	40	.05	10.5
Double stage	DDL40	40	.001	11.0
Double stage	DDL75	75	.001	18.5
Double stage	DDL150	150	.001	20.0
Double stage	DDL300	300	.001	23.5
Teflon Coated	DDL75T	75	.001	18.5
Double stage	DDL150T	150	.001	20.0
Double stage	DDL300T	300	.001	23.5

## Javac "SHARK"

This NEW double stage oil sealed rotary vane high vacuum pump offers high flow with deep vacuum in a unique blow moulded casing. Incorporating the Javac "VACPAK" replacement cartridge system. This unit is ideal as a general purpose budget pump and features a hose connection with self-draining oil-mist eliminator which is replaceable.

Recommended for standard high vacuum applications were deep vacuums are required.

Flow rate:	ltr/min	150
Vacuum:	mbr, ultimate	0.015
Gas Ballast:	Yes	Yes
Weight:	kg	11
Dimensions:	mm LXWXH	498x300x180
Part number:	VNR-152-2 Lab	



## GEM. Vacuum System

The GEM is a unique oil-sealed rotary vacuum pump that uses a gear type mechanism making it robust, durable and vapour tolerant. It features an oil mist eliminator with oil recycling and recovery. A vacuum gauge and vacuum level regulator is included which inhibits sample bumping and foaming.

Flow Rate:	litre/min	26
Vacuum:	mbr, ultimate	<0.13
Gas ballast:	Yes	Yes
Weight:	kg	11.1
Dimensions:	mm LXWXH	213x130x368
Part number:	8890C-02	



## ECONOVAC

A portable vacuum and pressure pump which is ideal for simple bench top filtration and aeration. Aimed as a cost effective replacement to water jet pumps the Econovac can also act as a compressor making it a universal pump.

Flow rate:	ltr/min	9.2
Vacuum:	mbr, ultimate	<292
Pressure:	psi	33
Weight:	Kg	2.3
Dimensions:	mm LXWXH	194x114x191
Part number:	2511C-02	



## Univac

A portable vacuum and pressure pump fitted with inlet/outlet gauges and catch pots. A vacuum regulator is included and the outlet water trap doubles as a silencer.

Flow rate:	ltr/min	19
Vacuum:	mbr, ultimate	<133
Weight:	Kg	6.6
Dimensions:	mm LXWXH	206x224x254
Part number:	2522C-02	



## DV1

A two-stage "Wob-L" dry piston-pump providing good vacuum combined with a similar pump down curve to an oil seal pump. This makes this pump very useful in applications where efficient dehydration is essential. It is most suitable for vacuum ovens and molecular biology applications.

Flow rate:	ltr/min	50
Vacuum:	mbr, ultimate	<5
Weight:	Kg	7.5
Dimensions:	mm LXWXH	282x165x231
Part number:	2562C-02	



## DV2

A two stage "Wob-L" dry piston pump that combines high flow with deep vacuum. The excellent pump down curve makes it suitable for applications such as vacuum ovens and centrifugal evaporators.

Flow rate:	Ltr/min	100
Vacuum:	mbr, ultimate	<5
Weight:	Kg	10.3
Dimensions:	mm LXWXH	282x234x279
Part number:	2581C-24	



## Cell harvester

A twin head "Wob-L" dry piston pump configured specifically for high flow with low vacuum. The design of this pump allows for efficient cell harvesting without damaging the media through aggressive dehydration and is particularly good with sticky viscous substances. Supplied complete with vacuum gauge and catch pot.

Flow rate:	ltr/min	168
Vacuum:	mbr, ultimate	<80
Weight:	Kg	10.3
Dimensions:	mm LXWXH	282x234x279
Part number:	2585C-50	



## MPC101Z Teflon Diaphragm Pump

Full Teflon coated double stage pump designed for use with aggressive chemicals and suitable for filtration. This pump has a low flow rate with moderate vacuum.

Flow rate:	ltr/min	17
Vacuum:	mbar	<8
Weight:	Kg	6.5
Dimensions:	mm LXWXH	195x235x145
Part number:	400171-01	

