

Technical Specifications

Wavelength range	190 – 1,100 nm
Wavelength scan range	200 – 950 nm
Measure time for full scan range	Less than 5 seconds
Wavelength reproducibility	< ± 0.2 nm
Wavelength accuracy	± 2 nm
Bandwidth	Better than 5 nm
Stray light	< 0.5% at 220 nm using NaI and 340 nm using NaNO ₂
Photometric range	-0.3 – 2.499 A 0-199% T
Detection Range	dsDNA: 2 ng/μl to 8,000 ng/μl, BSA: 0.1 mg/μl to saturation, approx. 160 mg/ml
Photometric reproducibility	±0.003 A (0 to 0.5 A) ±0.007 A (0.5-1.0 A) @ 260 nm
Photometric accuracy	±0.005 A or ±1% of the reading, whichever is the greater
Zero stability	±0.003 A/hour after 20 min warm up @ 340 nm
Noise	0.002 A rms at 0 A @ 260 nm 0.005 A (pk to pk) at 0 A @ 260 nm
Optical arrangement	Dual channel Czerny Turner with flat grating, 1024 pixel CCD array, concave mirrors
Lamp	Xenon flash lamp
Lifetime	10 ⁹ flashes, up to 10 years
Warranty	1 year
Performance verification	Auto diagnostics when switched on
Cell types	15 mm centre height, outside dimension 12.5 mm x 12.5 mm
Cuvette storage	capacity for eight 10 mm cells
Photometric mode	Abs, %T, concentration, scan, ratio, multi wavelength, kinetics in ΔAbs x factor/min
Method storage	Up to 90 methods in user methods
Built-in methods	Nucleid acid, microarray (labeling efficiency), protein and cell density
Display formats	320 x 240 pixels
Size	140 mm x 275 mm x 380 mm
Weight	< 4.5 kg
Operating voltage	90-250 V, 50/60 Hz, Max 30 VA
Input / Output ports	USB or Bluetooth for connection to a PC for direct data download for spreadsheet calculations, printout and data storage

Features and specifications are subject to change without notice.



Worldwide
Headquarter

IMPLEN GmbH
Schatzbogen 52
81829 München
Germany

Tel.: +49 89 72637180
Fax: +49 89 726371854
Email: info@implen.de
www.implen.de

UK Office

Implen UK Ltd.
Cumberland House
24-28 Baxter Avenue
Southend on Sea
Essex, SS2 6HZ
Great Britain

Tel.: +44 1702 335588
Fax: +44 1702 334262
Email: info@implen.co.uk
www.implen.co.uk

Switzerland Office

Implen Schweiz
Schaentenmos 15
CH-8126 Zumikon
Switzerland

Tel.: +41 44 9180896
Fax: +41 44 9180812
Email: info@implen.ch
www.implen.ch

The NanoPhotometer™



AGM München



The NanoPhotometer™

One spectrophotometer for all your needs

All kinds of UV/Vis photometric applications in molecular biology, biochemistry and microbiology featuring

- ultra low sample volume: starting from 0.7 μ l
- measurements without cuvettes plus standard cuvette option

- predefined methods for protein and nucleic acid measurements
- full spectrum scan and kinetic methods
- full developed software on-board and direct data download to PC
- high reproducibility



VOLUME
3,500 μ l
200 μ l
100 μ l
0.7 μ l

SMALL & FAST

Print data via built-in printer, store data via USB or Bluetooth on your PC

READY TO USE

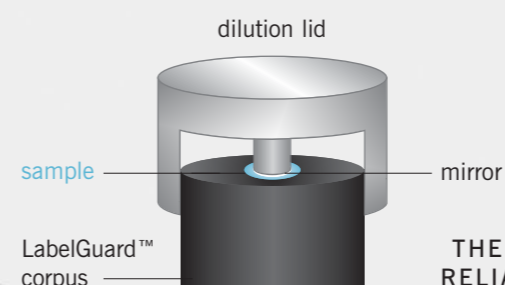
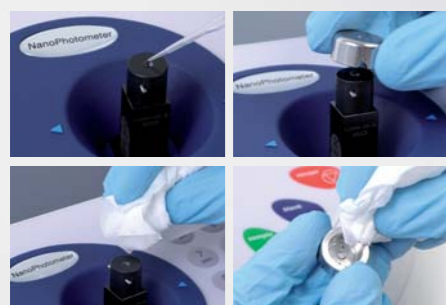
Low bench space requirement, computer independent. Built-in computer with backlit LCD display for fast and easy data access

ALL IN ONE

Multi purpose sample holder for sub-microliter, standard cuvette and fiber optic applications

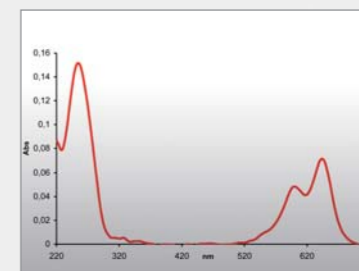
ULTRA LOW VOLUME, NO SAMPLE DILUTION

LabelGuard™ microliter cell device for sub-microliter measurements included within the system



THE ONLY TECHNOLOGY FOR RELIABLE PROTEIN ANALYSIS

No evaporation, volatile solvents possible.



WAVELENGTH
1,100 nm
190 nm

EASY TO CONTROL

Rugged key pad for fast method selection and easy data entry

CELL DENSITY
 8×10^6 cells/ml
1 cells/ml

NUCLEIC ACIDS
8,000 ng/ μ l
2 ng/ μ l
approx. 160 mg/ml

PROTEIN (BSA)
0.1 mg/ml

