

Wireless Lab[®]

Temperature Data Logging & Alarm System



Unique: no software necessary!

**Data is accessible anywhere on
www.wirelesslab.eu**

ilShin[®] Europe

Wireless Lab[®] Plug & Play data control

Wireless Lab is the plug & play solution for easy monitoring and safe storage of temperature data. Monitor your laboratory equipment without using any paper, installation time or software. You can check your equipment performance anywhere using www.wirelesslab.eu and your personal password. With the optional alarm service, Wireless Lab will send you alarm messages by SMS or e-mail. Receiving automatic generated quality reports by e-mail every Monday morning? Wireless Lab makes it possible!



What does it mean for you?

- No investment in software, you can use any available computer with internet;
- No installation of cables / wires reduces installation times;
- Data is accessible anytime anyplace 24 hours 7 days a week;
- Data is shown in easy graphs and tables;
- Considerable savings on operational costs;
- Monitoring of temperatures on several locations;
- Wireless Lab runs on any kind of platform (Windows 3.1, Mac, NT, 2000, XP, Linux, etc);
- Download data in Excel format;
- Optional alarms via SMS text messages or e-mail;
- Optional periodical quality report generator.



Applications from -200°C up to +125°C

The Wireless Lab System performs independently from brand. Every temperature related product with a throughput for a sensor is suitable for this system:

- Liquid Nitrogen Vessels;
- Blood Bank Refrigerators and Freezers;
- Water baths and Chillers;
- Clean Rooms.
- Ultra Low Temperature Freezers;
- CO₂ incubators and ovens;
- Refrigerated rooms;

How does it work?

Wireless Lab uses PT1000 sensors to record temperatures from your equipment. Each sensor is battery powered and is able to send the data wireless to a main communication station. The communication station stores all data and sends this data using the internet (LAN) and / or GPRS to a secured data server. By using your personal password on www.wirelesslab.eu you can check temperatures, graphs, tables and optional alarms on every available computer.



Wireless (approx. 100 metres range depending on building structure)



Standard with LAN

Optional with GPRS (needs SIM with 1MB)

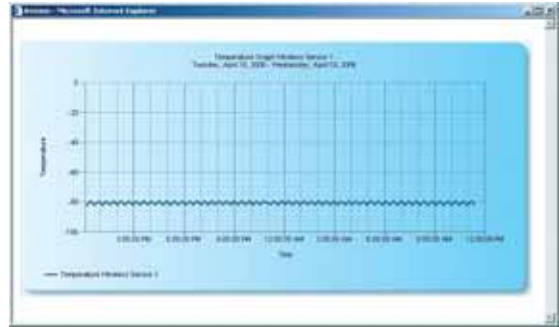
PT1000 sensor sends wireless temperature data to main communication station



The communication station stores and collects the data of all PT1000 sensors which are in the range and sends this data to the WWW platform

Standard Package

The standard package includes data logging and storage on the secured server. By logging in to www.wirelesslab.eu you can easily highlight graphs and tables showing the performance of your equipment.



The standard package consists of:

- Wireless PT1000 Temperature Sensors;
- Communication Station to store data and send it to WWW server;
- Data storage and web service for your personal status screen;
- Username and password for www.wirelesslab.eu;
- Sensor numbers are linked to equipment description and location;
- Actual temperatures of each sensor;
- 24 hour graphs for each sensor;
- Flexible graphs to highlight a specific time and period of a sensor;
- Flexible tables to export data in Excel.



Additional alarm services by SMS or e-mail



Additional to the standard data logging and storage package you can activate alarms for your sensors. Your personal screen will now show colours indicating alarm status for each sensor. You can choose to receive alarm messages by SMS or e-mail and to single or multiple users (groups).

The additional alarm services are:

- Alarm subscription for each sensor;
- Alarm by SMS and / or e-mail;
- Alarms are sent to single users or even to groups of users;
- Alarms are sent to a user group at once or to users ordered in priority in the user group;
- Members of a group are able to reset alarms;
- In case of alarm reset: members higher in priority will be informed by SMS or e-mail;
- Alarms are logged and filed in an alarm log on www.wirelesslab.eu.



WWW accessible on
www.wirelesslab.eu



data per month)

All data is stored and transferred to the WWW platform which makes all data accessible by internet

Anywhere in the world on any computer with internet access a user is able to monitor data in tables, graphs and alarms

Automatic Quality Report Generator

This option is an excellent tool for those responsible for temperature registration in relation to GLP and GMP. Periodical (weekly, monthly or quarterly) a user will receive an e-mail with PDF file showing a summary of the recent performance on all equipment.



SMS Messenger

The SMS messenger is a stand-alone low cost alternative. The module does not use the WWW platform but sends basic alarms without data storage and monitoring

This basic stand-alone module has three alarm channels. In case of input variations the module sends a SMS text message (alarm and restore) separately for each channel. Standard the module is supplied with three cables to connect on the remote alarm of an iShin Freezer, however the system is suitable to connect to almost all remote alarms in the market (using dry contacts (NO/NC/COM)).



Hardware Specifications

Communication Station	
Dimensions	330 x 120 x 160 mm (W x D X H), Antenna: 90 mm
Power supply	220-240V, 50-60 Hz, 0.21 A
Sensor capacity	Maximum of 32 wireless sensors per station
Communication	1. Ethernet 10 Base-T, 10 MBstandard TCP / IP network (port 80) 2. GPRS modem (needs SIM card)
Battery	LiMn, 3 years duty cycle
Wireless Sensors	
Dimensions	65 x 50 x 115 mm (W x D x H), Antenna: 90 mm
Power supply	2 x AA (Duracell Plus or Panasonic LR6 ST Alkaline M-size)
Battery lifetime	Depending on sample time (min. 1 year, max 3 years)
Maximum range	1000 metres in open field
Average range	100 metres in 'normal' building
Communication frequency	433Mhz
SMS Messenger	
Dimensions	160 x 60 x 160 mm (W x D X H)
Power supply	220-240 V, 50-60 Hz, 0.2 A
Battery backup	30 hours backup in case of power failure

iShin Europe Quality Control

iShin Europe uses the Wireless Lab system for their own Quality Control. Wireless Lab is used for testing all iShin product before shipping out.

Please check it out live on the web:
www.wirelesslab.eu
Loginname: iShin
password: europe



Your local iShin dealer: