

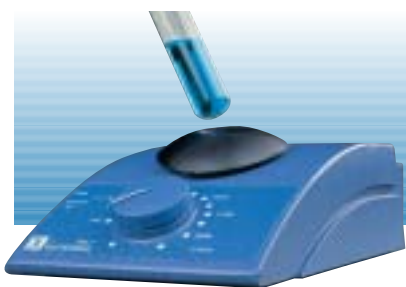
IKA® Mixing Orbital shakers



1 **MS 2 Minishaker**
Universal orbital shaker

2 **MS 1.1**
Standard attachment, page 39.
(included with MS 2)

3 **MS 1.2**
One-hand attachment, page 39.
(included with MS 2)



MS 2 Minishaker

Universal, small-sized shaker. With an orbit of 4.5 mm and a speed range of 0 - 2,500 rpm, the MS 2 is suitable for all small vessels.

- Electronic speed control
- Convenient handling provided by control console facing the operator
- Flat construction
- Attractive design
- Can either be operated continuously or with automatic starter, which is triggered by pressing the attachment

Accessories (Page):

Attachments (39): MS 1.1, MS 1.2 (included with delivery)

Shaking motion	orbital
Orbital diameter	4.5 mm
Permissible shaking weight (with attachment)	0.5 kg
Motor rating	
input / output	18 / 10 W
Permissible ON-time	100 %
Speed range	0 - 2,500 rpm
Speed display	scale
Dimensions (W x D x H)	115 x 225 x 60 mm
Weight (without attachment)	3.5 kg
Permissible ambient temperature	5 - 40 °C
Permissible humidity	80 %
Protection class acc. to DIN EN 60529	IP 21



MS 1 Minishaker

Same features as MS 2, additionally suitable for work with a microtiter plate. Large selection of attachments.

Accessories (Page):

MS 1.1, MS 1.2, MS 1.3, MS 1.4 (39/40)

Included with delivery (Page):

MS 1.1, MS 1.2, MS 1.32, MS 1.4 (39/40)

	Ident. No.		Ident. No.
MS 2	L002050	230 V 50/60 Hz	L002051 115 V 50/60 Hz
MS 1	L001500	230 V 50/60 Hz	L001501 115 V 50/60 Hz

IKA® Mixing Orbital shakers

VXR basic IKA Vibrax®

Optoelectronically controlled small shaker with a very wide speed range.

- Suitable for continuous operation
- New design and improved drive system
- Circular shaking motions
- Slow speeds are well maintained
- Attachments are interchangeable



Accessories (Page):

Attachments (40): VX 1, VX 2, VX 2E, VX 7, VX 8

Shaking motion	orbital
Orbital diameter	4 mm
Max. shaking weight (with attachment)	2 kg
Motor rating input / output	38 / 6.5 W
Max. ON-time	100 %
Speed range	0 - 2,200 rpm
Speed display	scale
Dimensions (W x D x H)	157 x 247 x 130 mm
Weight (without attachment)	5.7 kg
Permissible ambient temperature	5 - 40 °C
Permissible humidity	80 %
Protection class acc. to DIN EN 60529	IP 21

Ident. No.	Ident. No.
2819000 230 V 50/60 Hz	2819001 115 V 50/60 Hz

MTS 2/4 digital microtiter shaker

Newly developed special shaker for shaking two or four microtiter plates.

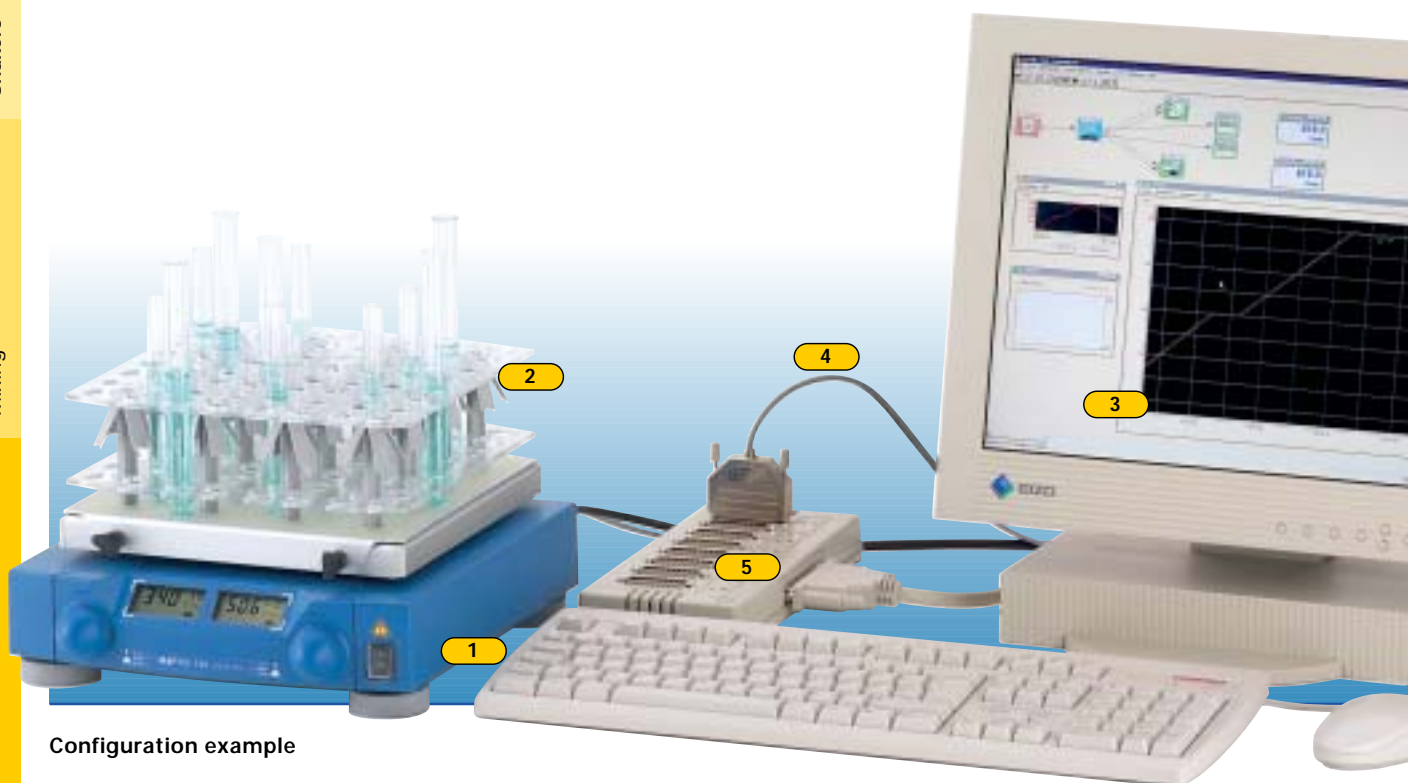
- Electronic speed control
- Digital timer
- Alarm to indicate set time has expired
- Incl. attachment (without microtiter plate)



Shaking motion	orbital
Orbital diameter	3 mm
Max. shaking weight	2 or 4 microtiter plates
Motor rating input / output	19 / 5 W
Max. ON-time	100 %
Speed range	0 - 1,100 rpm
Speed display	scale
Timer	∞ / 1 - 99 min
Timer display	digital
Dimensions (W x D x H)	185 x 320 x 105 mm
Weight (without attachment)	2.7 kg
Permissible ambient temperature	5 - 40 °C
Permissible humidity	80 %
Protection class acc. to DIN EN 60529	IP 21

Ident. No.	Ident. No.
3208000 230 V 50/60 Hz	3208001 115 V 50/60 Hz

IKA® Mixing Orbital shakers



Configuration example

1 **KS 130 control**
Orbital shaker with RS 232 interface,
page 35.

2 **AS 130.4**
Test tube support,
page 41.

3 **labworldsoft®**
Laboratory software for
control and data collection,
page 115.

4 **PC 1.5**
Cable, page 120.

5 **PCI 8.2**
Plug-in card for mounting in the PC to
control up to 8 instruments, page 119.

IKA® Mixing Orbital shakers



KS 130 basic

Small, quiet shaker ensures long life with ideal swivel motion, for a maximum shaking weight of 2 kg.

- Electronic adjustment of speed and timer
- LED display for speed and time adjustment
- Wide range of attachment combinations makes it possible to use almost all shapes and sizes of vessels
- Attachments are not included, please order separately

Accessories (Page):

Attachments (41): AS 130.1, AS 130.2, AS 130.3, AS 130.4

Shaking motion	orbital
Orbital diameter	4 mm
Max. shaking weight (with attachment)	2.0 kg
Motor rating	
input / output	45 W / 10 W
Max. ON-time	100 %
Adjustable	
speed range	80 - 800 rpm
Speed display	LED line
Timer	∞ / 5 - 50 min
Dimensions (W x D x H)	270 x 316 x 98 mm
Weight (without attachment)	7.7 kg
Permissible	
ambient temperature	5 - 50 °C
Permissible humidity	80 %
Protection class acc. to DIN EN 60529	IP 21

Ident. No.	Ident. No.
2980000 230 V 50/60 Hz	2980001 115 V 50/60 Hz



KS 130 control

Small, quiet shaker ensures long life with ideal swivel motion, for a maximum shaking weight of 2 kg.

- Electronic adjustment of speed and timer
- A digital display makes it possible to read the speed, timer function and operating modes
- Electronic time switching clock: 0 - 9 h 59min or continuous operation (∞)
- With integrated end point positioning (for automated robot-controlled sampling)
- All functions can be controlled and documented with labworldsoft®
- Special version with reverse rotating direction on request
- Wide range of attachment combinations makes it possible to use almost all shapes and sizes of vessels
- Attachments are not included in delivery, please order separately

Accessories (Page):

Attachments (41): AS 130.1, AS 130.2, AS 130.3, AS 130.4, labworldsoft® (115), PC 1.5 Cable (120)

Shaking motion	orbital
Orbital diameter	4 mm
Max. shaking weight (with attachment)	2.0 kg
Motor rating	
input / output	45 W / 10 W
Max. ON-time	100 %
Adjustable	
speed range	0 - 800 rpm
Speed display	digital
Timer	∞ / 0 - 9 h 59 min
Dimensions (W x D x H)	270 x 316 x 98 mm
Weight (without attachment)	7.8 kg
Permissible	
ambient temperature	5 - 50 °C
Permissible humidity	80 %
Protection class acc. to DIN EN 60529	IP 21
Interface	RS 232 / analog

Ident. No.	Ident. No.
2980100 230 V 50/60 Hz	2980101 115 V 50/60 Hz

IKA® Mixing Orbital shakers



KS 260 basic

Compact, flat shaker with ideal swivel motion, for a maximum shaking weight of 7.5 kg.

- Electronic adjustment of speed and timer
- LED display for speed and time adjustment
- Wide range of attachment combinations makes it possible to use almost all shapes and sizes of vessels
- Attachments are not included, please order separately

Accessories (Page):

Attachment (42): AS 260.1, AS 260.2, AS 260.3

Shaking motion	orbital
Orbital diameter	10 mm
Max. shaking weight (with attachment)	7.5 kg
Motor rating input / output	45 W / 10 W
Max. ON-time	100 %
Adjustable speed range	20 - 500 rpm
Speed display	LED - line
Timer	∞ / 5 - 50 min
Dimensions (W x D x H)	360 x 420 x 100 mm
Weight	8.1 kg
Permissible ambient temperature	5 - 50 °C
Permissible humidity	80 %
Protection class acc. to DIN EN 60529	IP 21

Ident. No.	Ident. No.
2980200 230 V 50/60 Hz	2980201 115 V 50/60 Hz



KS 260 control

Compact, flat shaker with ideal swivel motion, for a maximum shaking weight of 7.5 kg.

- Electronic adjustment of speed and timer
- Digital display makes it possible to read the speed, timer function and operating modes
- Electronic time switching clock: 0 - 9 h 59 min or continuous operation (∞)
- With integrated end point positioning (for automated robot-controlled sampling)
- All functions can be controlled and documented with labworldsoft®
- Special version with reverse rotating direction on request
- Wide range of attachment combinations makes it possible to use almost all shapes and sizes of vessels
- Attachments are not included, please order separately

Accessories (Page):

Attachments (42): AS 260.1, AS 260.2, AS 260.3, PC 1.5 Cable (120), labworldsoft® (115)

Shaking motion	orbital
Orbital diameter	10 mm
Max. shaking weight (with attachment)	7.5 kg
Motor rating input / output	45 / 10 W
Max. ON-time	100 %
Adjustable speed range	10 - 500 rpm
Speed display	digital
Timer	∞ / 9 h 59 min
Timer display	digital
Dimensions (W x D x H)	360 x 420 x 100 mm
Weight	8.8 kg
Permissible ambient temperature	5 - 50 °C
Permissible humidity	80 %
Protection class acc. to DIN EN 60529	IP 21
Interface	RS 232 / analog

Ident. No.	Ident. No.
2980300 230 V 50/60 Hz	2980301 115 V 50/60 Hz

IKA® Mixing Orbital shakers



KS 501 digital

Low profile laboratory shaker with a pleasant design, large mounting surface and load capacity of up to 15 kg.

- Infinitely variable speed control of 0 - 300 rpm
- Digital display
- Orbital diameter 30 mm
- Ideal for vessels with a volume of more than 250 ml, e.g. round flasks, Erlenmeyer flasks, culture flasks and culture bottles
- Ideal for biological and microbiological growth tests, for the production of stock solutions
- Guaranteed continuous operation (∞) even under extreme loads
- Includes timer
- Attachments are not included, please order separately

Accessories (Page):

Attachments (43): AS 501.1, AS 501.4, AS 501.5

Shaking motion	orbital
Orbital diameter	30 mm
Max. shaking weight (with attachment)	15 kg
Motor rating input / output	70 / 19 W
Max. ON-time	100 %
Adjustable speed range	0 - 300 rpm
Speed display	digital
Timer	∞ / 0 - 56 min
Dimensions (W x D x H)	505 x 585 x 120 mm
Weight	24 kg
Permissible ambient temperature	5 - 50 °C
Permissible humidity	80 %
Protection class acc. to DIN EN 60529	IP 21

Ident. No.	Ident. No.
2526400 230 V 50/60 Hz	2526401 115 V 50/60 Hz

Horizontal shakers



HS 501 digital

Low profile laboratory shaker with a pleasant design, large mounting surface and load capacity of up to 15 kg.

- Infinitely variable speed control of 0 - 300 rpm
- Digital display
- Orbital diameter 30 mm
- Ideal for all lying vessels, e.g. separating funnels
- Guaranteed continuous operation (∞) even under extreme loads
- Includes timer
- Attachments are not included in delivery, please order separately

Accessories (Page):

Attachments (43): AS 501.1, AS 501.2, AS 501.3, AS 501.4, AS 501.5, AS 501.6

Shaking motion	reciprocating
Stroke	30 mm
Max. shaking weight (with attachment)	15 kg
Motor rating input / output	70 / 19 W
Max. ON-time	100 %
Adjustable speed range	0 - 300 rpm
Speed display	digital
Timer	∞ / 0 - 56 min
Dimensions (W x D x H)	505 x 585 x 120 mm
Weight	24 kg
Permissible ambient temperature	5 - 50 °C
Permissible humidity	80 %
Protection class acc. to DIN EN 60529	IP 21

Ident. No.	Ident. No.
2527000 230 V 50/60 Hz	2527001 115 V 50/60 Hz

IKA® Mixing Horizontal shakers



HS 260 basic

Compact, flat shaker with ideal swivel motion, for a maximum shaking weight of 7.5 kg.

- Electronic adjustment of speed and timer
- LED display for speed and time adjustment
- Wide range of attachment combinations makes it possible to use almost all shapes and sizes of vessels
- Attachments are not included in delivery, please order separately

Accessories (Page):

Attachments (42): AS 260.1, AS 260.2, AS 260.3, AS 260.5

Shaking motion	reciprocating
Stroke	20 mm
Max. shaking weight (with attachment)	7.5 kg
Motor rating input / output	45 / 10 W
Max. ON-time	100 %
Adjustable speed range	20 - 300 rpm
Speed display	LED line
Timer	∞ / 5 - 50 min
Dimensions (W x D x H)	360 x 420 x 100 mm
Weight	8.1 kg
Permissible ambient temperature	5 - 50 °C
Permissible humidity	80 %
Protection class acc. to DIN EN 60529	IP 21

Ident. No.

3066600 230 V 50/60 Hz

Ident. No.

3066601 115 V 50/60 Hz

HS 260 control

Compact, flat shaker with ideal swivel motion, for a maximum shaking weight of 7.5 kg.

- Electronic adjustment of speed and timer
- Digital display makes it possible to read the speed, timer function and operating modes
- Electronic time switching clock: 0 - 9 h 59min or continuous operation (∞)
- With integrated endpoint positioning (for automated robot-controlled sampling)
- All functions can be controlled and documented with labworldsoft® software
- Special version with reverse rotating direction on request
- Wide range of attachment combinations makes it possible to use almost all shapes and sizes of vessels
- Attachments are not included, please order separately

Accessories (Page):

Attachments (42): AS 260.1, AS 260.2, AS 260.3, AS 260.5, PC 1.5 Cable (120), labworldsoft® (115)

Shaking motion	reciprocating
Stroke	20 mm
Max. shaking weight (with attachment)	7.5 kg
Motor rating input / output	45 / 10 W
Max. ON-time	100 %
Adjustable speed range	10 - 300 rpm
Speed display	digital
Timer	∞ / 9 h 59 min
Timer display	digital
Dimensions (W x D x H)	360 x 420 x 100 mm
Weight (without attachment)	8.8 kg
Permissible ambient temperature	5 - 50 °C
Permissible humidity	80 %
Protection class acc. to DIN EN 60529	IP 21
Interface	RS 232 / analog

Ident. No.

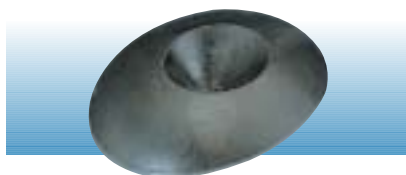
3066700 230 V 50/60 Hz

Ident. No.

3066701 115 V 50/60 Hz

IKA® Mixing

Shakers accessories (MS 1/MS 2)



MS 1.1 Standard attachment

For mounting test tubes and other small vessels of up to 30 mm in diameter. A trough prevents slipping caused by vibrations.

Included with the minishakers MS 1 and MS 2.

Ident. No.

L001260



MS 1.2 One-hand attachment

With a soft foam platform for processing larger vessels as well, e.g. 100 ml flasks.

Diameter 85 mm

Included with the minishakers MS 1 and MS 2.

Ident. No.

L001900



MS 1.3 Test tube attachment

For various foam inserts for processing of several test tubes simultaneously and in continuous operation.

Included with the minishakers MS 1 and MS 2.

Accessories (Page 39/40):

MS 1.21, MS 1.31, MS 1.32, MS 1.33, MS 1.34

Ident. No.

L001490



MS 1.21 One-hand insert

Foam insert for insertion into the test tube attachment MS 1.3.

Included with the minishakers MS 1 and MS 2.

Ident. No.

L001540



MS 1.31 Test tube insert

Bore holes (number)	14
Hole Ø	8 mm
Material	ethylvinyl-acetate

Ident. No.

L001840



MS 1.32 Test tube insert

Bore holes (number)	6
Hole Ø	10 mm
Material	ethylvinyl-acetate
Included with the minishakers MS 1 and MS 2.	

Ident. No.

L001850



MS 1.33 Test tube insert

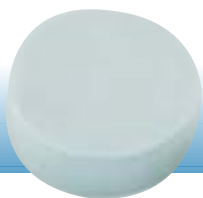
Bore holes (number)	4
Hole Ø	15 mm
Material	ethylvinyl-acetate

Ident. No.

L001860

IKA® Mixing

Shakers accessories (MS 1/MS 2 / VXR)



MS 1.34 Test tube insert
For any number of bore holes.

Material	ethylvinyl-acetate
----------	--------------------

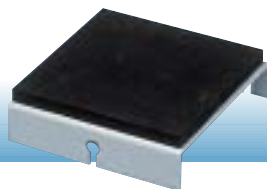
Ident. No.	L001830
------------	----------------



MS 1.4 Microtiter plate attachment
For use with a microtiter plate.

Dimensions microtiter plate (W x D)	85 x 130 mm
Included with minishaker MS 1.	

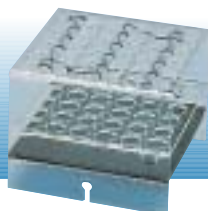
Ident. No.	L001280
------------	----------------



VX 1 One-hand attachment
For shaking single, non-fixed vessels of 1 - 250 ml.

Dimensions (W x D x H)	130 x 135 x 40 mm
Weight	160 g

Ident. No.	0607200
------------	----------------



VX 2 Test tube attachment
For up to 36 test tubes or centrifugal tubes with a diameter of 16 mm.

Dimensions (W x D x H)	140 x 145 x 115 mm
Material	Macrolon
Weight	300 g

Ident. No.	0568900
------------	----------------



VX 2E "Eppendorf" attachment
For intensive mixing of up to 64 "Eppendorf" tubes (1.5 ml).

Dimensions (W x D x H)	210 x 210 x 65 mm
Weight	240 g

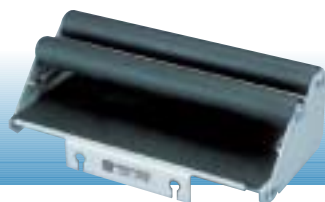
Ident. No.	1618100
------------	----------------



VX 7 Dish attachment
For careful mixing of culture bottles, Petri dishes, ect.

Dimensions (W x D x H)	410 x 210 x 40 mm
Weight	740 g

Ident. No.	0953300
------------	----------------



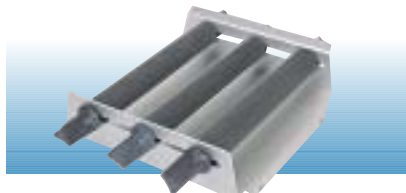
VX 8 Universal attachment
For rapid and secure clamping, e.g. 2 Erlenmeyer flasks up to 500 ml

Dimensions (W x D x H)	265 x 136 x 60 mm
Clamping length	25 - 135 mm
Min. height of vessel	80 mm
Weight	760 g

Ident. No.	0910400
------------	----------------

IKA® Mixing

Shakers accessories (KS 130)



AS 130.1 Universal attachment

For use with various types of vessels by means of universal, infinitely variable clamping rolls.

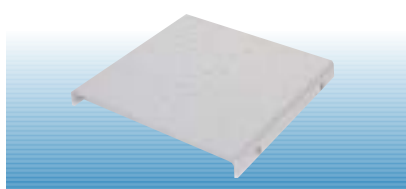
Dimensions (W x D x H)	325 x 234 x 88 mm
Set-up surface	220 x 220 mm
Weight	850 g

Included with delivery (Page):

- 1 x AS 1.30 Basic holder (44)
- 3 x AS 1.31 Clamping roll (44)
- 6 x AS 1.5 Fastening screw (44)

Ident. No.

8017300



AS 130.2 Fixing clip attachment

For processing round flasks, measuring flasks and Erlenmeyer flasks. Please order fixing clips separately.

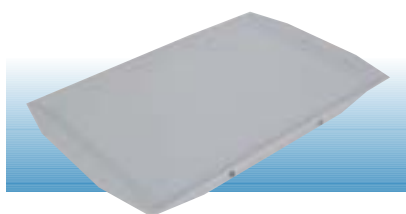
Accessories (Page):

Fixing clips (45): AS 2.1, AS 2.2, AS 2.3, AS 2.4, AS 2.5

Dimensions (W x D x H)	230 x 230 x 24 mm
Capacity: Number of fixing clips (volume)	20 x AS 2.1 (25 ml) 12 x AS 2.2 (50 ml) 12 x AS 2.3 (100 ml) 6 x AS 2.4 (250 ml) 4 x AS 2.5 (500 ml)
Weight	650 g

Ident. No.

3115000



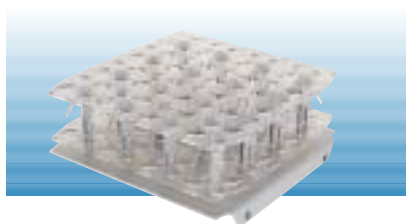
AS 130.3 Dish attachment

For smooth shaking operations in the low viscosity range, e.g. Petri dishes or culture bottles. With integrated slip-resistant foil (PP).

Dimensions (W x D x H)	420 x 270 x 32 mm
Set-up surface	220 x 340 mm
Weight	370 g

Ident. No.

3120000



AS 130.4 Test tube support

For intensive shaking, e.g. small tubes, test tubes, cuvettes, centrifuge tubes.

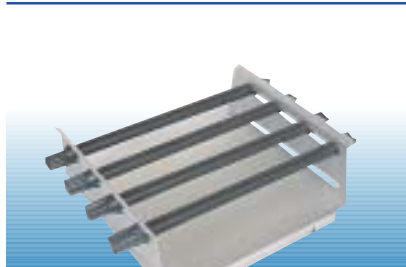
Dimensions (W x D x H)	220 x 230 x 95 mm
Capacity	64 test tubes
Vessel Ø	10 - 16 mm
Min. height of vessel	80 mm
Weight	670 g

Ident. No.

3120300

IKA® Mixing

Shakers accessories (HS / KS 260)



AS 260.1 Universal attachment

For various types of vessels. Infinitely variable clamping rolls allow universal adaptation to the vessels.

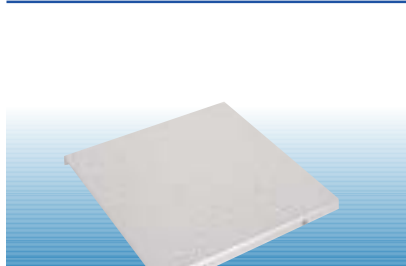
Dimensions (W x D x H)	425 x 335 x 135 mm
Set-up surface	320 x 320 mm
Weight	1,600 g

Included with delivery (Page):

1 x AS 1.60 Basic holder (44),
4 x AS 1.61 Clamping roll (44),
8 x AS 1.5 Fastening screw (44)

Ident. No.

8017400



AS 260.2 Fixing clip attachment

For shaking flasks, Erlenmeyer flasks and bottles with a round crosssection (without fixing clips).

Accessories (Page):

Fixing clips (45): AS 2.1, AS 2.2, AS 2.3, AS 2.4, AS 2.5

Dimensions (W x D x H)	330 x 330 x 24 mm
Capacity: Number of fixing clips (volume)	56 x AS 2.1 (25 ml) 23 x AS 2.2 (50 ml) 23 x AS 2.3 (100 ml) 11 x AS 2.4 (250 ml) 9 x AS 2.5 (500 ml)
Weight	1,290 g

Ident. No.

3115500



AS 260.3 Dish attachment

For smooth movement for cell cultures, nutrient media in Petri dishes, culture bottles and vessels with a low center of gravity. With integrated slip-resistant foil (PP).

Dimensions (W x D x H)	410 x 370 x 32 mm
Set-up surface	320 x 320 mm
Weight	460 g

Ident. No.

3120600



AS 260.5 Separating funnel attachment

For shaking out, salting out, extracting, eluting, enriching. The 3 clamping rolls (included in delivery) are height-adjustable for adaption to different separating funnel sizes. The separating funnels are secured with O-rings (5 O-rings included).

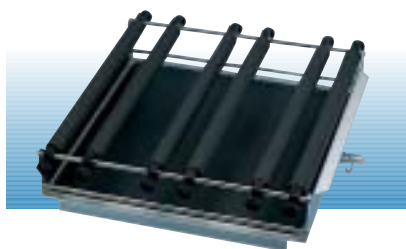
Dimensions (W x D x H)	334 x 425 x 145 mm
Capacity (number of separating funnels per volume, pear-shaped)	6 x 50 mm 5 x 100 mm 3 x 250 mm 3 x 500 mm
Weight	1,550 g

Ident. No.

3120900

IKA® Mixing

Shakers accessories (HS / KS 501)



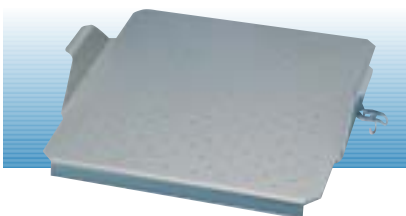
AS 501.1 Universal attachment

For various types of vessels with a minimum volume of 50 ml. Ideally more than 250 ml. The clamping rolls may be adjusted to two levels.

Dimensions (W x D x H)	480 x 500 x 120 mm
Set-up surface	420 x 420 mm
Weight	4.000 g
Included with delivery (Page):	1 x AS 1.10 Basic holder (44) 6 x AS 1.11 Clamping roll (44) 12 x AS 1.6 Fastening screw

Ident. No.

8000200



AS 501.4 Fixing clip support

For shaking flasks, Erlenmeyer flasks and pear-shaped flasks (without fixing clips).

Accessories (Page):

Fixing clips (45): AS 2.1, AS 2.2, AS 2.3, AS 2.4, AS 2.5

Dimensions (W x D x H)	475 x 460 x 95 mm
Capacity: Number of fixing clips (volume)	50 x AS 2.1 (25 ml) 48 x AS 2.2 (50 ml) 25 x AS 2.3 (100 ml) 16 x AS 2.4 (250 ml) 12 x AS 2.5 (500 ml)
Weight	2,640 g

Ident. No.

2341100



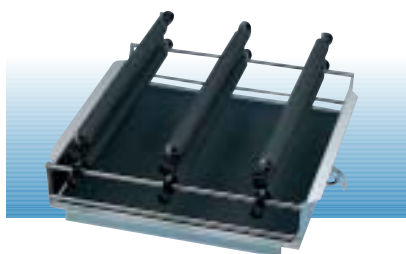
AS 501.5 Dish attachment

For smoothly shaking dishes, but also for smooth mixing in vessels with a large, flat bottom (wide-necked Erlenmeyer flasks and beakers). A plastic foil with mild adhesive prevents the vessel from slipping.

Dimensions (W x D x H)	450 x 450 x 45 mm
Set-up surface	420 x 420 mm
Weight	1,120 g

Ident. No.

2339600



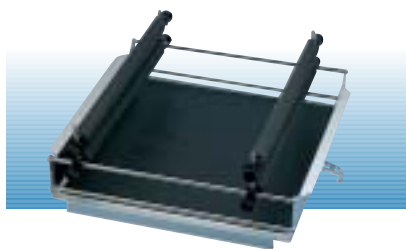
AS 501.2 Separating funnel attachment

For shaking out, eluting, extracting, gassing out, dissolving, enriching, etc. Adjustment for the clamping rolls is infinitely variable, the set-up height can be changed by means of clamping devices.

Dimensions (W x D x H)	480 x 505 x 190 mm
Capacity (number of separating funnels per volume, pear-shaped)	12 x 50 ml 10 x 100 ml 6 x 250 ml
Weight	4.180 g
Included with delivery (Page):	1 x AS 1.10, 6 x AS 1.11, 6 x AS 1.6 (44), 6 x AS 1.7 (45)

Ident. No.

8000300



AS 501.3 Separating funnel attachment

Same features as AS 501.2.

Dimensions (W x D x H)	480 x 505 x 190 mm
Capacity (number of separating funnels per volume)	4 x 500 ml 3 x 1,000 ml 2 x 2,000 ml
Weight	3,720 g
Included with delivery (Page):	1 x AS 1.10, 4 x AS 1.11, 4 x AS 1.6 (44), 6 x AS 1.7 (45)

Ident. No.

8000400



AS 501.6 Separating funnel attachment

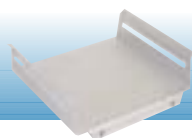
Same features as AS 501.2. This attachment will hold 4 x 1,000 ml separating funnels.

Dimensions (W x D x H)	480 x 505 x 225 mm
Capacity (number of separating funnels per volume, pear-shaped)	4 x 1,000 ml
Weight	5.500 g
Included with delivery (Page):	1 x AS 1.10, 4 x AS 1.6 (44), 4 x AS 1.12, 8 x AS 1.13 (45)

Ident. No.

8000500

IKA® Mixing Shakers accessories

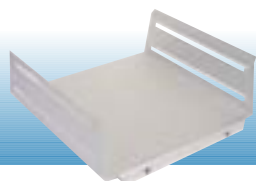


AS 1.30 Basic holder
For use with universal attachment AS 130.1.

Dimensions (W x D x H) 252 x 234 x 88 mm

Accessories (Page): AS 1.31, AS 1.5 (44)

Ident. No.
3148000

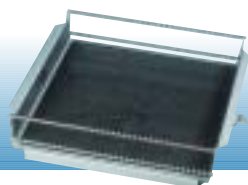


AS 1.60 Basic holder
For use with universal attachment AS 260.1.

Dimensions (W x D x H) 348 x 335 x 135 mm

Accessories (Page): AS 1.31, AS 1.5 (44)

Ident. No.
3149000



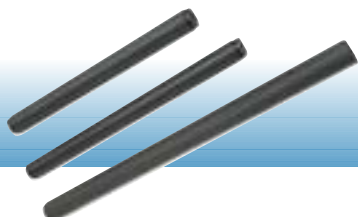
AS 1.10 Basic holder
For use with universal attachment AS 501.1 and separating funnel attachments AS 501.2, AS 501.3 and AS 501.6.

Dimensions (W x D x H) 480 x 480 x 120 mm

Accessories (Page): AS 1.11, AS 1.6 (44), AS 1.7, AS 1.8, AS 1.12, AS 1.13 (45)

Ident. No.
2339700

Clamping roll



AS 1.31
For use with basic holder AS 1.30

Length 228 mm

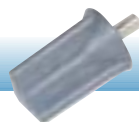
AS 1.61
For use with basic holder AS 1.60

Length 335 mm

AS 1.11
For use with basic holder AS 1.10

Length 410 mm

Ident. No.
3030500 AS 1.31
3030501 AS 1.61
2339800 AS 1.11



AS 1.5 Fastening screw
Fastening screw for the universal attachments AS 130.1, AS 260.1 and the separating funnel attachment AS 260.5. Two AS 1.5 fastening screws are required for fastening a clamping roll onto the corresponding basic holder.

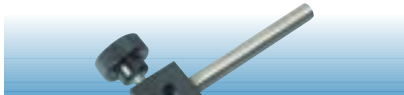
Ident. No.
2979400



AS 1.6 Clamping device
Two AS 1.6 clamping devices are required for fastening a clamping roll to the corresponding basic holder (for basic holder AS 1.10 only)

Ident. No.
1268400

IKA® Mixing Shakers accessories

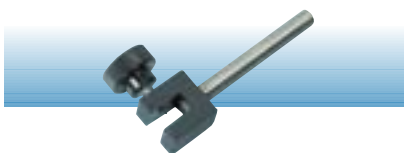


AS 1.7 Clamping device

Two AS 1.6 and two AS 1.7 clamping devices are required for fastening two clamping rolls one above the other (for clamping separating funnels). For basic holder AS 1.10 only.

Ident. No.

1269200

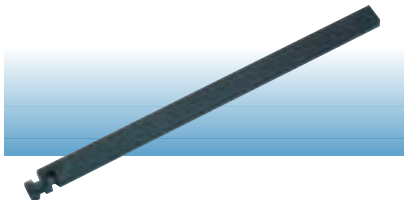


AS 1.8 Supporting clamping device

Two AS 1.6 clamping devices and two AS 1.8 supporting clamping devices are required if a clamping roll is to be attached at a higher position (e.g. for fixing a vessel which has a higher point of gravity). For basic holder AS 1.10 only.

Ident. No.

1268900



AS 1.12 Supporting bar

For attaching two AS 1.13 ground section holders for fixing 1000 ml separating funnels. For basic holder AS 1.10 only.

Length

437 mm

Accessories (Page): AS 1.13 (45)

Ident. No.

2594500

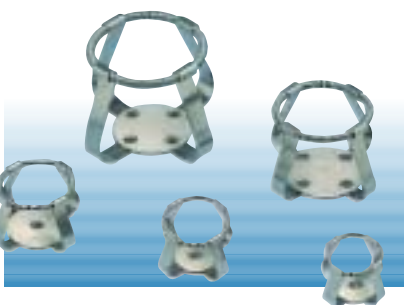


AS 1.13 Ground section holder

For attaching separating funnels with ground opening NS 29 (2x AS 1.13 necessary per separating funnel). For basic holder AS 1.10 only.

Ident. No.

2597000



AS 2.1 Fixing clips

For flask volume 25 ml

AS 2.2 Fixing clips

For flask volume 50 ml

AS 2.3 Fixing clips

For flask volume 100 ml

AS 2.4 Fixing clips

For flask volume 200 ml

AS 2.5 Fixing clips

For flask volume 500 ml

Ident. No.

1234300 AS 2.1

1234400 AS 2.2

1234500 AS 2.3

1234600 AS 2.4

1234700 AS 2.5