

Squirrel OQ606 Temperature Logger

Building on over 40 years experience in temperature monitoring, the Grant Squirrel OQ606 Logger is easy to use, more affordable, and offers greater flexibility for measuring temperature. The OQ606 can start recording or print results at the touch of a button, and with SquirrelView software can be configured to your precise requirements.

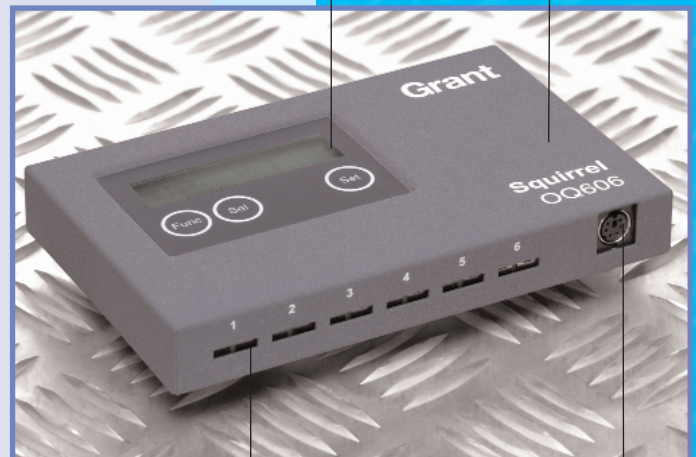
*Easy-to-use
solution
for temperature
monitoring*

Key Features

- 6 channel temperature logger for use with a wide range of type K thermocouple probes offers greater flexibility and a quick response
- Battery operated and easily portable
- Simple 3 button operation via built in display or from PC
- Can be configured to automatically start and stop logging on time or temperature levels
- Fast sample rates for fast process times; up to 8 samples/second and if required can provide automatic cure calculation in through process applications
- Non-volatile memory provides up to 260,000 readings of secure data
- Time and date reported with each reading

Free
Software
&
Support

small,
compact &
robust steel
case
built-in
display and
keypad for
ease of use



6 "auto detect"
thermocouple inputs
make set-up easy

direct connection
to an A4 portable
or desktop printer
for immediate
results

Benefits

Flexibility in temperature monitoring:

- Suitable for a wide range of temperature recording applications in industry, research & development.

Simple to use:

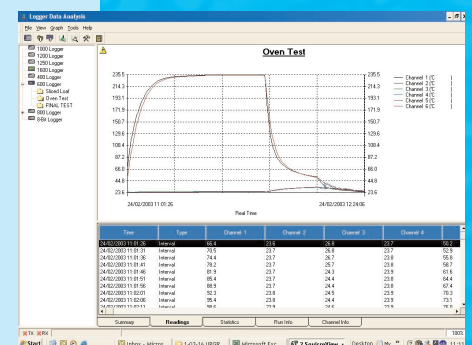
- Power up the logger, connect your thermocouples and conduct your tests. The logger automatically detects when sensors are present making set-up easy.

Small in size:

- The OQ606 is small and compact, making it suitable for use in a variety of applications, thus offering complete flexibility.

Simple record keeping:

- With the touch of a button, the OQ606 can directly printout user-configurable, concise reports to simplify record keeping and provide ISO 9000 quality records.

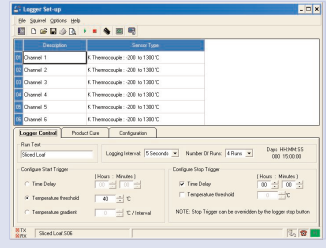


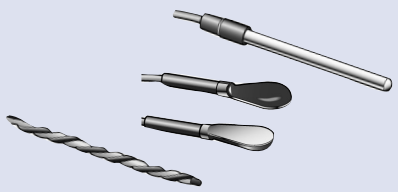
Squirrel OQ606 Temperature Logger

Grant
DATA LOGGING

System Specification

<p>DATA LOGGER OQ606</p> <p>Accuracy: -150 to 500°C, ±0.5°C (-238°F to 932°F, ±0.9°F) -200 to 1300°C ±1.0°C (-328 to 2372°F, ± 1.8°F)</p> <p>Resolution: 0.1°C (0.18°F)</p> <p>Sample rate: Fastest: eight times per second per channel Slowest: once every two hours per channel</p> <p>Channels: 6 K-type thermocouple</p> <p>Temperature measuring range -200°C to 1300°C (-328 to 2372°F)</p>	<p>Operating environment: Temperature range -30 to 65°C, Humidity 95%</p> <p>Memory: Flash memory of 260,000 readings</p> <p>Maximum runs stored: 8</p> <p>Communication: RS232, download at 115kbits/s</p> <p>Display: Alphanumeric display of 2 x 16 characters shows cure pass/fail, battery status, probes connected, real time readings and communication to printer or PC</p>	<p>Power supply: Three AA cells to give 200 hours operation at default settings</p> <p>Physical details: Dimensions (l x w x h): 148x95x21mm Weight: 450g</p> <p>Direct Printing: Printer driver types: HP Deskjets (for more information, contact our logger sales department)</p>
---	--	--

<p>SquirrelView software</p> <p>Powerful and easy to use spreadsheet style software for configuring, downloading, displaying and analysing data from your Squirrel data logger. Upgrade to SquirrelView plus and with just a few mouse clicks you will quickly be able to view real time charts or historical data. You can also quickly download the data for use in your favourite spreadsheet, database or analysis program.</p>	<p>Features:</p> <ul style="list-style-type: none">• Storage of user settings on PC• Temperature profile feature• Upper and lower thresholds• Viewing of tabulated data• Real time metering for test purposes• Export of data to ASCII format• Basic report function	
--	---	--

<p>Probes</p> <p>The OQ606 logger is suitable for use with our wide range of thermocouple sensors. Thermocouple sensors are suitable for temperatures down to -25°C and up to 1100°C. Thermocouples have a quick response time and</p>	<p>are suitable for a wide range of applications, from small and delicate, to heavy industrial. Our full range of probes can be found in our Temperature and Humidity Probes datasheet, which is available on request.</p>	
---	--	---

The Total Solution
Years of experience in solving data logging problems means Grant can help you save time by putting together the right package, starting with the sensor right through to the data analysis.

Grant

**Grant Instruments
(Cambridge) Ltd**
Shepreth
Cambridgeshire
SG8 6GB

Tel: +44 (0) 1763 260811
www.grant.co.uk
loggersales@grant.co.uk
Fax: +44 (0) 1763 262410

Printed in England-OQ606/0203/UK

Guarantee The Grant OQ606 data acquisition system is guaranteed against faulty materials or workmanship for one year. If repairs are carried out under guarantee, no charge is made for labour or materials, and within the United Kingdom, no charge is made for carriage.
CE mark The Grant OQ606 data acquisition system bears a CE mark and meets relevant European directives.
Quality Statement Grant Instruments operates a Quality Management System complying with BS EN ISO 9002: 1994. It is Grant's policy to supply customers with products which are fit for their intended purpose, safe in use, perform reliably to published specification and are backed by a fast and efficient customer support service.

Manufactured and designed in Cambridge, England.