

# GX Wolf Microscopes



## Prepared Slides

High Quality Specimens  
Mounted on Glass Slides  
Individually Labelled

Wolf Laboratories have one of the largest collections of prepared slides made available to you at exceptionally low prices.

These specimens are perfect for learning all about the microscopic world. They are suitable for teaching at all levels and for the curious hobbyist.

These slides are made available as preconfigured sets mounted in high grade plastic or wooden boxes. You can also choose to purchase individual slides but, for practical reasons, they are only available in minimum quantities of 10 for any one specimen.

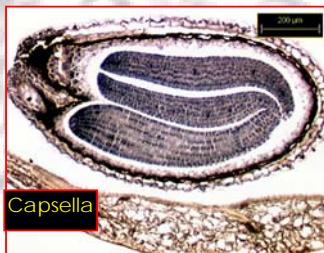
To observe these specimens you will need an upright (or inverted) compound microscope with transmitted light.

Due to the time taken to collect and mount these specimens and the fact that many are only seasonally available it, is not possible to keep a stock of all types at all times, but we do endeavour to maintain stocks of the most popular sets.

If you have a requirement for significant numbers of specimens not listed here please let us know and we will be pleased to investigate the feasibility of supply.

The following pages describe the range of slides available. Contact us for prices.

*Please note that, unavoidably, set contents will change without notice according to the availability of specimens. These specimens are prepared by a wide variety of individuals and organisations resulting in a variety of labelling formats and prices.*



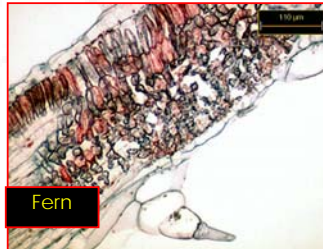
Capsella



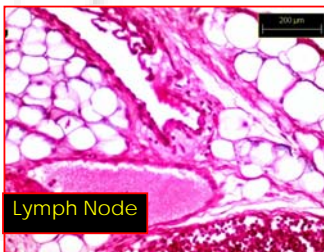
Hydra



Helianthus



Fern



Lymph Node



Gall Bladder



Pediculus Capitis



Mosquito

Pictures taken from slides in the collections

110 µm

## GX Wolf Microscopes Prepared Slides

GXM Part Number	Description
<b>BOTANY</b>	
<b>General Botany - Series 1</b>	
GXPS-BOT-LW0001	Allium Seale Epidermis, W.M.
GXPS-BOT-LW0002	Mitosis, Onion Root Tip Cells , L.S.
GXPS-BOT-LW0003	Vicia Faba Young Root, C.S.
GXPS-BOT-LW0004	Corn Stem, C.S.
GXPS-BOT-LW0005	Cucurbits Stem, C.S.
GXPS-BOT-LW0006	Corn Stem, L.S.
GXPS-BOT-LW0007	Cucurbits Stem,L.S.
GXPS-BOT-LW0008	Tilia Stem , C.S.
GXPS-BOT-LW0009	Pelargonium, Stem , C.S.
GXPS-BOT-LW0010	Pinc Leaf, C.S.
GXPS-BOT-LW0011	Ligustrum Leaf, C.S.
GXPS-BOT-LW0012	Helianthus Leaf , C.S.
GXPS-BOT-LW0013	Narcissus Leaf, C.S.
GXPS-BOT-LW0014	Leaf of Winter Jasmine, C.S.
GXPS-BOT-LW0015	Pollen Germination , W.M.
GXPS-BOT-LW0016	Lily Anther, C.S.
GXPS-BOT-LW0017	Lily Ovary, C.S.
GXPS-BOT-LW0018	Capsella Young Embryo, Sec
GXPS-BOT-LW0019	Capsella Old Embryo, Sec
GXPS-BOT-LW0020	Corn Seed With Embryo, L.S.
GXPS-BOT-LW0021	Pinus of male Strobilus With Microscores, C.S.
GXPS-BOT-LW0022	Stone Cells, Sec Tion
GXPS-BOT-LW0023	Fern Prothallium, W.M.
GXPS-BOT-LW0024	Fern Prothallium With Young Sporophyte,W.M.
GXPS-BOT-LW0025	Lichenrons Ox, Sec.
GXPS-BOT-LW0026	Moss Antheridia, L.S.
GXPS-BOT-LW0027	Moss Archegonia, L.S.
GXPS-BOT-LW0028	Moss Protonemata, W.M.
GXPS-BOT-LW0029	Rhizopus Sporangia, W.M.
GXPS-BOT-LW0030	Yeast , W.M.
GXPS-BOT-LW0031	Penicillium, W.M.
GXPS-BOT-LW0032	Aspergillus, W.M.
GXPS-BOT-LW0033	Mushroom, Sec.
GXPS-BOT-LW0034	Diatoms Sp, W.M.
GXPS-BOT-LW0035	Volvox, W.M.
GXPS-BOT-LW0036	Spirogyra, W.M.
GXPS-BOT-LW0037	Spirogyra Conjugation, W.M.
GXPS-BOT-LW0038	Stem Tip, L.S.
<b>GXPS-BOT-SER1</b>	<b>Boxed Prepared Slides, 30 slides, General Botany Series 1, selected from the above list, in a wooden box</b> <b>Contents will vary according to seasonal availability</b>

110  $\mu\text{m}$ 

## GX Wolf Microscopes Prepared Slides

GXM Part Number	Description
<b>BOTANY</b>	
<b>General Botany - Series 2 Set A</b>	
GXPS-BOT-A0001	ONION EPIDERMIS; WM. (BULB SCALE)
GXPS-BOT-A0002	MAGNOLIA (MAGNOLIA, MAGNOLIACEAE); MACERATED WOOD, WM.
GXPS-BOT-A0003	POLLEN; MIXED TYPES, WM.
GXPS-BOT-A0004	LILIUM (LILY, LILIACEAE); OVARY, CS FOR ANATROPOUS OVULE.
GXPS-BOT-A0005	MOSS PROTONEMA; WM.
GXPS-BOT-A0006	FERN GAMETOPHYTE; WM.
GXPS-BOT-A0007	FERN STEM (RHIZOME); CS.
GXPS-BOT-A0008	ROOT; CS, MATURE (BUTTERCUP).
GXPS-BOT-A0009	ONION ROOT TIP; LS FOR MITOSIS.
GXPS-BOT-A0010	LEAF EPIDERMIS; WM. (SEDUM)
GXPS-BOT-A0011	LEAF, CS.
GXPS-BOT-A0012	ANTHER; CS, FOR MATURE POLLEN.
GXPS-BOT-A0013	MARCHANTIA POLYMORPHA; LIFE CYCLE (CUPULE, ANTHERIDIA, ARCHEGONIA, & SPOROPHYTE, LS).
GXPS-BOT-A0014	HERBACEOUS & WOODY STEMS, CS.
GXPS-BOT-A0015	ZEA MAYS (INDIAN CORN, GRAMINEAE); MATURE STEM, CS.
GXPS-BOT-A0016	ZEA MAYS (INDIAN CORN, GRAMINEAE); MATURE PROP ROOT, CS.
GXPS-BOT-A0017	ZEA MAYS (INDIAN CORN, GRAMINEAE); LEAF BLADE WITH MOTOR CELLS, CS (LAMINA).
GXPS-BOT-A0018	MARCHANTIA POLYMORPHA; SPOROPHYTES, LS FOR GENERAL STRUCTURE.
GXPS-BOT-A0019	PINUS; LEAF, CS, TWO-NEEDLE TYPE.

110 µm

GXPS-BOT-A0020	TILIA AMERICANA (BASSWOOD, TILIACEAE); THREE YEAR STEM, CS.
GXPS-BOT-A0022	FERN LEAFLET; WITH SORUS, LS.
GXPS-BOT-A0024	PINUS; OLDER STEM, CRT.
GXPS-BOT-A0025	PINUS; YOUNG STEM CS, LEAF CS, MALE STROBILUS CS, & FEMALE STROBILUS CS, ON THE SAME SLIDE.
GXPS-BOT-A0026	TILIA AMERICANA (BASSWOOD, TILIACEAE); ONE, TWO, & THREE YEAR STEMS, CS.
GXPS-BOT-A0027	CUSCUTA (DODDER, CONVULVULACEAE); STEM & MEDIAN HAUSTORIUM, ON HOST CS.
GXPS-BOT-A0028	MONOCOT & DICOT STEMS, CS.
GXPS-BOT-A0029	MONOCOT & DICOT ROOTS; CS.
GXPS-BOT-A0030	PRIMARY & SECONDARY ROOTS; CS.
GXPS-BOT-A0031	MONOCOT & DICOT LEAVES; CS.
GXPS-BOT-A0032	HYDROPHYTIC, MESOPHYTIC, & XEROPHYTIC LEAVES; CS.
GXPS-BOT-A0034	ELODEA CANADENSIS (WATERWEED, HYDROCHARITACEAE); HYDROPHYTIC LEAF, WM.
GXPS-BOT-A0042	MARCHANTIA POLYMORPHA; ANTHERIDIUM, NEAR-MEDIAN LS (ATTACHED STALK).
GXPS-BOT-A0043	MARCHANTIA POLYMORPHA; ARCHEGONIUM LS, SELECTED TO SHOW VENTER & PORTION OF NECK WITH ATTACHED STALK.
GXPS-BOT-A0044	MARCHANTIA POLYMORPHA; MATURE SPOROPHYTE, NEAR-MEDIAN LS (ATTACHED).
GXPS-BOT-A0045	MARCHANTIA POLYMORPHA; CUPULE WITH GEMMAE, MEDIAN LS.
GXPS-BOT-A0046	MARCHANTIA POLYMORPHA; GEMMAE, WM.
GXPS-BOT-A0051	BRYUM ROSEUM; LEAF, CS.
GXPS-BOT-A0055	MOSESSES - LEAFY BRANCH
GXPS-BOT-A0059	MOSS ANTHERIDIA; LS.
GXPS-BOT-A0062	POGONATUM; STEM, CS.
GXPS-BOT-A0063	POLYTRICHUM; LEAF, WM.



100 µm

GXPS-BOT-A0064	POLYTRICHUM; FRUITING STEM, CS (SETA).
GXPS-BOT-A0065	POLYTRICHUM; LEAVES, CS.
GXPS-BOT-A0066	POLYTRICHUM; MATURE CAPSULE, CS.
GXPS-BOT-A0067	POLYTRICHUM; MATURE CAPSULE, LS.
GXPS-BOT-A0068	POLYTRICHUM; ANTHERIDIA, LS.
GXPS-BOT-A0076	EQUISETUM ARVENSE; RHIZOME, CS.
GXPS-BOT-A0077	EQUISETUM ARVENSE; MATURE STROBILUS, CS.
GXPS-BOT-A0089	LYCOPODIUM ANNOTINUM - RHIZOME, CS
GXPS-BOT-A0090	LYCOPODIUM ANNOTINUM - ROOT, CS
<b>GXPS-BOT-SER2-SETA</b>	<b>Botany Set, Series 2, Set A 50 Prepared Slides in a Plastic Box</b>

110  $\mu\text{m}$ 

## GX Wolf Microscopes Prepared Slides

GXM Part Number	Description
-----------------	-------------

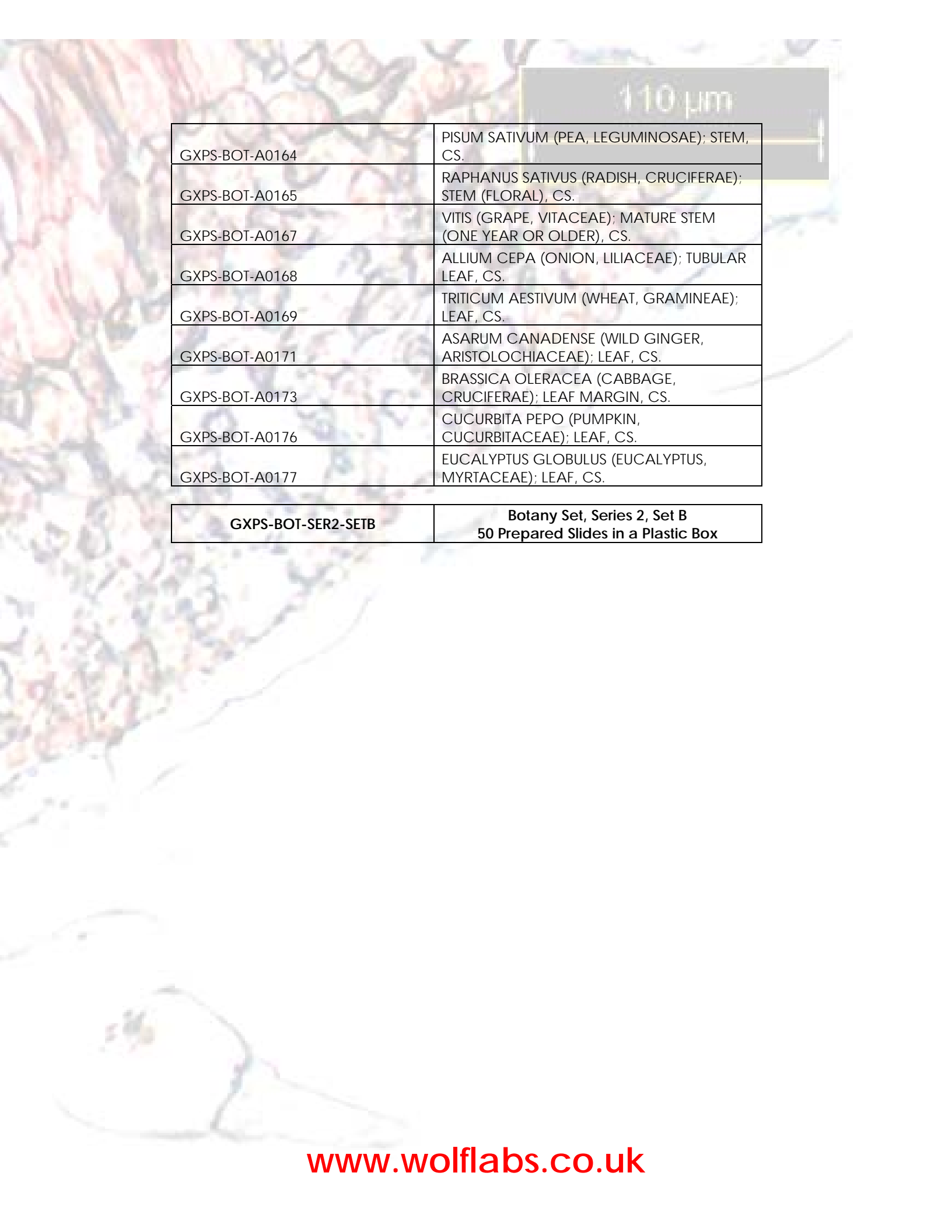
### BOTANY

#### General Botany - Series 2 Set B

GXPS-BOT-A0091	LYCOPODIUM ANNOTINUM - STROBILUS, CS
GXPS-BOT-A0092	LYCOPODIUM CLAVATUM - RHIZOME, CS
GXPS-BOT-A0093	LYCOPODIUM CLAVATUM - ROOT, CS
GXPS-BOT-A0094	LYCOPODIUM CLAVATUM - STROBILUS, CS
GXPS-BOT-A0099	LYCOPODIUM LUCIDULUM - GEMMA, CS
GXPS-BOT-A0103	LYCOPODIUM SELAGO - STEM, CS
GXPS-BOT-A0104	LYCOPODIUM CLAVATUM - STROBILUS, LS
GXPS-BOT-A0105	LYCOPODIUM ANNOTINUM - STROBILUS, MEDIAN LS
GXPS-BOT-A0106	ADIANTUM PEDATUM; LEAFLET, CS, UNATTACHED SPORANGIA.
GXPS-BOT-A0108	BOTRYCHIUM; SPOANGIA, LS, UNATTACHED.
GXPS-BOT-A0111	DICRANOPTERIS (GLEICHENIA); LEAFLET, CS, WITH UNATTACHED SPORANGIA.
GXPS-BOT-A0119	PINUS; MATURE ONE YEAR STEM, CS.
GXPS-BOT-A0120	PINUS; OLDER STEM SHOWING ANNUAL RINGS, CS.
GXPS-BOT-A0121	PINUS; ROOT, CS.
GXPS-BOT-A0122	PINUS; LEAF, CS, SINGLE-NEEDLE TYPE (P. MONOPHYLLA).
GXPS-BOT-A0127	LILIUM MICHIGANENSE (LILY, LILIACEAE); MATURE ROOT, CS.
GXPS-BOT-A0131	CUCUMIS SATIVUS (CUCUMBER, CUCURBITACEAE); ROOT, CS.
GXPS-BOT-A0132	CUCURBITA MAXIMA (SQUASH, CUCURBITACEAE); ROOT, CS.
GXPS-BOT-A0133	DAUCUS CAROTA (CARROT, UMBELLIFERAE); TAP ROOT, CS (BEFORE SECONDARY GROWTH).

110  $\mu\text{m}$ 

GXPS-BOT-A0134	GOSSYPIUM (COTTON, MALVACEAE); ROOT, CS.
GXPS-BOT-A0135	HEDERA HELIX (ENGLISH IVY, ARALIACEAE); SOIL ROOT, CS.
GXPS-BOT-A0136	IPOMOEA BATATAS (SWEET POTATO, CONVULVULACEAE); ROOT, CS.
GXPS-BOT-A0137	LINUM USITATISSIMUM (FLAX, LINACEAE); ROOT, CS.
GXPS-BOT-A0139	LYCOPERSICUM ESCULENTUM (TOMATO, SOLANACEAE); MATURE ROOT, CS.
GXPS-BOT-A0140	NICOTIANA TABACUM (TOBACCO, SOLANACEAE); ROOT, CS.
GXPS-BOT-A0141	PHASEOLUS VULGARIS (BEAN, LEGUMINOSAE); MATURE ROOT, CS.
GXPS-BOT-A0142	PISUM SATIVUM (PEA, LEGUMINOSAE); MATURE ROOT, CS.
GXPS-BOT-A0144	RAPHANUS SATIVUS (RADISH, CRUCIFERAE); TAP ROOT, CS (BEFORE SECONDARY GROWTH).
GXPS-BOT-A0148	ASPARAGUS OFFICINALIS (ASPARAGUS, LILIACEAE); MATURE STEM WITH LIGNIFIED VESSELS, CS.
GXPS-BOT-A0149	LILIUM MICHIGANENSE (LILY, LILIACEAE); STEM, CS.
GXPS-BOT-A0150	BEGONIA (BEGONIA, BEGONIACEAE); STEM, CS.
GXPS-BOT-A0151	BRASSICA OLERACEA (CABBAGE, CRUCIFERAE); STEM, CS.
GXPS-BOT-A0152	CUCUMIS SATIVUS (CUCUMBER, CUCURBITACEAE); STEM, CS.
GXPS-BOT-A0153	CUCURBITA MAXIMA (SQUASH, CUCURBITACEAE); STEM, CS.
GXPS-BOT-A0154	CUCURBITA PEPO (PUMPKIN, CUCURBITACEAE); STEM, CS.
GXPS-BOT-A0155	DELPHINIUM AJACIS (LARKSPUR, RANUNCULACEAE); MESOPHYTIC STEM, CS.
GXPS-BOT-A0156	DIGITALIS PURPUREA (FOXGLOVE, SCROPHULARIACEAE); STEM, CS.
GXPS-BOT-A0159	IPOMOEA BATATAS (SWEET POTATO, CONVULVULACEAE); STEM, CS.
GXPS-BOT-A0160	LINUM USITATISSIMUM (FLAX, LINACEAE); STEM, CS FOR PROTOPHLOEM (BAST) FIBERS.
GXPS-BOT-A0161	LYCOPERSICUM ESCULENTUM (TOMATO, SOLANACEAE); OLDER STEM, CS.
GXPS-BOT-A0163	PHASEOLUS VULGARIS (BEAN, LEGUMINOSAE); STEM, CS.



110 µm

GXPS-BOT-A0164	PISUM SATIVUM (PEA, LEGUMINOSAE); STEM, CS.
GXPS-BOT-A0165	RAPHANUS SATIVUS (RADISH, CRUCIFERAE); STEM (FLORAL), CS.
GXPS-BOT-A0167	VITIS (GRAPE, VITACEAE); MATURE STEM (ONE YEAR OR OLDER), CS.
GXPS-BOT-A0168	ALLIUM CEPA (ONION, LILIACEAE); TUBULAR LEAF, CS.
GXPS-BOT-A0169	TRITICUM AESTIVUM (WHEAT, GRAMINEAE); LEAF, CS.
GXPS-BOT-A0171	ASARUM CANADENSE (WILD GINGER, ARISTOLOCHIACEAE); LEAF, CS.
GXPS-BOT-A0173	BRASSICA OLERACEA (CABBAGE, CRUCIFERAE); LEAF MARGIN, CS.
GXPS-BOT-A0176	CUCURBITA PEPO (PUMPKIN, CUCURBITACEAE); LEAF, CS.
GXPS-BOT-A0177	EUCALYPTUS GLOBULUS (EUCALYPTUS, MYRTACEAE); LEAF, CS.
<b>GXPS-BOT-SER2-SETB</b>	<b>Botany Set, Series 2, Set B 50 Prepared Slides in a Plastic Box</b>

110 µm

## GX Wolf Microscopes Prepared Slides

GXM Part Number	Description
<b>BOTANY</b>	
<b>General Botany - Series 2 Set C</b>	
GXPS-BOT-A0178	GOSSYPIUM (COTTON, MALVACEAE); LEAF, CS.
GXPS-BOT-A0179	HEDERA HELIX (ENGLISH IVY, ARALIACEAE); LEAF, CS.
GXPS-BOT-A0180	IPOMOEA BATATAS (SWEET POTATO, CONVULVULACEAE); LEAF, CS.
GXPS-BOT-A0181	LYCOPERSICUM ESCULENTUM (TOMATO, SOLANACEAE); LEAF, CS.
GXPS-BOT-A0183	NICOTIANA TABACUM (TOBACCO, SOLANACEAE); MATURE LEAF, CS.
GXPS-BOT-A0184	OLEA PURPUREA (OLIVE, OLEACEAE); LEAF, CS.
GXPS-BOT-A0185	PHASEOLUS VULGARIS (BEAN, LEGUMINOSAE); LEAF, CS.
GXPS-BOT-A0186	PRUNUS PERSICA (PEACH, ROSACEAE); LEAF, CS.
GXPS-BOT-A0187	RAPHANUS SATIVUS (RADISH, CRUCIFERAE); LEAF, CS.
GXPS-BOT-A0192	BRASSICA OLERACEA (CABBAGE, CRUCIFERAE); FLOWER BUD, CS.
GXPS-BOT-A0193	ASARUM CANADENSE (WILD GINGER, ARISTOLOCHIACEAE); FLOWER BUD, CS.
GXPS-BOT-A0194	ASCLEPIAS TUBEROSA (BUTTERFLY WEED, ASCLEPIADACEAE); FLOWER BUD, CS FOR POLLINIUM.
GXPS-BOT-A0198	GAYLUSSACIA (HUCKLEBERRY, ERICACEAE); FLOWER BUD, CS.
GXPS-BOT-A0201	LYCOPERSICUM ESCULENTUM (TOMATO, SOLANACEAE); HYPOGYNOUS BUD, CS (FLORAL DIAGRAM).
GXPS-BOT-A0211	PHASEOLUS VULGARIS (BEAN, LEGUMINOSAE); POD, CS WITH ATTACHED OVULE LS.
GXPS-BOT-A0212	PHASEOLUS VULGARIS (BEAN, LEGUMINOSAE); SEED, CS.
GXPS-BOT-A0216	TRITICUM AESTIVUM (WHEAT, GRAMINEAE); KERNEL, CS (GRAIN).
GXPS-BOT-A0217	ZEA MAYS (INDIAN CORN, GRAMINEAE); KERNEL, NON-MEDIAN LS.

110 µm

GXPS-BOT-A0218	RAPHANUS SATIVUS (RADISH, CRUCIFERAE); FRUIT, CS (SILIQUE).
GXPS-BOT-A0219	PYRUS MALUS (APPLE, ROSACEAE); FRUIT (POME), CS.
GXPS-BOT-A0221	LYCOPERSICUM ESCULENTUM (TOMATO, SOLANACEAE); YOUNG FRUIT, CS (BERRY).
GXPS-BOT-A0222	CUCURBITA PEPO (PUMPKIN, CUCURBITACEAE); FRUIT, CS (PEPO).
GXPS-BOT-A0223	CUCURBITA PEPO (PUMPKIN, CUCURBITACEAE); SEED, CS.
GXPS-BOT-A0224	CITRUS LIMONIA (LEMON, RUTACEAE); FRUIT, CS (HESPERIDIUM).
GXPS-BOT-A0226	MORUS ALBA (MULBERRY, MORACEAE); FRUIT, LS.
GXPS-BOT-A0229	SOLANUM TUBEROSUM (POTATO, SOLANACEAE); FRUIT, CS.
GXPS-BOT-A0232	RAPHANUS SATIVUS (RADISH, CRUCIFERAE); FLESHY ROOT, CS (FOOD STORAGE).
GXPS-BOT-A0233	ASPARAGUS OFFICINALIS (ASPARAGUS, LILIACEAE); YOUNG STEM (EDIBLE STAGE), CS.
GXPS-BOT-A0236	ALLIUM CEPA (ONION, LILIACEAE); BULB (LEAVES), CS.
GXPS-BOT-A0237	PHASEOLUS VULGARIS (BEAN, LEGUMINOSAE); POD, CS WITH ATTACHED OVULE LS.
GXPS-BOT-A0238	CUCUMIS SATIVUS (CUCUMBER, CUCURBITACEAE); YOUNG FRUIT, CS.
GXPS-BOT-A0239	PYRUS COMMUNIS (PEAR, ROSACEAE); YOUNG FRUIT, CS FOR STONE CELLS (BRACHYSCLEREIDS).
GXPS-BOT-A0241	LILIUM (LILY, LILIACEAE); FLOWER BUD, MEDIAN LS.
GXPS-BOT-A0242	LILIUM; ENTIRE FLOWER BUD, CS, WITH ANTHERS SHOWING EARLY SPOROGENOUS TISSUE.
GXPS-BOT-A0243	LILIUM; ANTHERS AT SYNIZESIS, CS.
GXPS-BOT-A0244	LILIUM; ANTHERS IN EARLY PROPHASE STAGES, CS.
GXPS-BOT-A0245	LILIUM; ANTHERS IN LATE PROPHASE, CS.
GXPS-BOT-A0246	LILIUM; ANTHERS WITH FIRST MEIOTIC DIVISIONS, CS.
GXPS-BOT-A0247	LILIUM; ANTHERS WITH SECOND MEIOTIC DIVISIONS, CS.
GXPS-BOT-A0248	LILIUM; ANTHERS WITH POLLEN TETRADS, CS.

A microscopic image of Liliium tissue, showing various cellular structures. A scale bar in the top right corner indicates 110 µm. The image is overlaid with a table of specimen details.

110 µm

GXPS-BOT-A0249	LILIUM; ANTHERS WITH ONE-CELLED MICROSPORES, CS.
GXPS-BOT-A0250	ANTHER; CS, FOR MATURE POLLEN.
GXPS-BOT-A0251	LILIUM; POLLINATED STIGMA & STYLE WITH POLLEN TUBES, LS.
GXPS-BOT-A0252	LILIUM; OVULE WITH MEGASPOROCYTE, COMPLETE INTEGUMENTS.
GXPS-BOT-A0253	LILIUM; OVULE SHOWING FIRST DIVISION.
GXPS-BOT-A0254	LILIUM; OVULE SHOWING BINUCLEATE STAGE, NUCLEI IN A SERIES OF SECTIONS.
GXPS-BOT-A0255	LILIUM; OVULE SHOWING SECOND DIVISION, DIVISIONS IN A SERIES FO SECTIONS.
GXPS-BOT-A0256	LILIUM; OVULE SHOWING FIRST 4-NUCLEATE STAGE (MEGASPORES), NUCLEI IN A SERIES OF SECTIONS.
GXPS-BOT-A0257	LILIUM; OVULE SHOWING THIRD DIVISION (FUSION OF 3 NUCLEI), DIVISIONS IN A SERIES OF SECTIONS.
GXPS-BOT-A0258	LILIUM; OVULE SHOWING SECOND 4-NUCLEATE STAGE, NUCLEI IN A SERIES OF SECTIONS.

<b>GXPS-BOT-SER2-SETC</b>	<b>Botany Set, Series 2, Set C 50 Prepared Slides in a Plastic Box</b>
---------------------------	--

110 µm

## GX Wolf Microscopes Prepared Slides

GXM Part Number	Description
<b>BOTANY</b>	

### General Botany - Series 2 Set D

GXPS-BOT-A0259	LILIUM; OVULE SHOWING FOURTH (FINAL) DIVISION, FOUR DIVISIONS IN A SERIES OF SECTIONS.
GXPS-BOT-A0260	LILIUM; OVULE WITH MATURE EMBRYO SAC, NUCLEI IN A SERIES OF SECTIONS.
GXPS-BOT-A0261	OVULE SHOWING THE GAMETE-FUSION IN DOUBLE FERTILIZATION
GXPS-BOT-A0262	LILIUM; SECTIONS SHOWING EARLY EMBRYO, MEDIAN.
GXPS-BOT-A0264	POA PRATENSE (GRASS, GRAMINEAE); LEAVES, FOLDED & OPEN, CS (BULLIFORM OR MOTOR CELLS).
GXPS-BOT-A0266	CUCUMIS SATIVUS (CUCUMBER, CUCURBITACEAE); FEMALE FLOWER BUD, MEDIAN LS.
GXPS-BOT-A0267	LYCOPERSICUM ESCULENTUM (TOMATO, SOLANACEAE); PEDICEL, LS TO DEMONSTRATE FRUIT ABSCISSION.
GXPS-BOT-A0268	PELARGONIUM (HOUSEHOLD GERANIUM, GERANIACEAE); YOUNG STEM, WITHOUT CORK, CS.
GXPS-BOT-A0269	BRASSICA OLERACEA (CABBAGE, CRUCIFERAE); HYDATHODE, MEDIAN LS.
GXPS-BOT-A0270	LYCOPERSICUM ESCULENTUM (TOMATO, SOLANACEAE); HYPOGYNOUS BUD, MEDIAN LS.
GXPS-BOT-A0273	DIOSPYROS (PERSIMMON, EBENACEAE); PLASMODESMATA IN ENDOSPERM, SECTION.
GXPS-BOT-A0275	ALOE (ALOE, LILIACEAE); STEM, LS FOR RAPHIDES (CRYSTALS).
GXPS-BOT-A0276	ZEA MAYS (INDIAN CORN, GRAMINEAE); PRIMARY ROOT TIP, CS FOR ROOT HAIRS.
GXPS-BOT-A0277	LAPORTEA CANADENSIS (WOOD NETTLE, URTICACEAE); STEM, WM FOR STINGING HAIRS.
GXPS-BOT-A0278	ECHINOCYSTIS LOBATA (WILD CUCUMBER, CUCURBITACEAE); TENDRIL, SECTION.
GXPS-BOT-A0282	ACORUS CALAMUS (SWEET FLAG, ARACEAE); RHIZOME, CS (AMPHIVASAL BUNDLE).

110 µm

GXPS-BOT-A0286	LEAF EPIDERMIS; WM. (SEDUM) (18-5)
GXPS-BOT-A0288	SOLANUM TUBEROSUM (POTATO, SOLANACEAE); MATURE STEM, CS (INTRAXYLARY PHLOEM).
GXPS-BOT-A0289	QUERCUS (OAK, FAGACEAE); YOUNG STEM WITH LEAF TRACES, CS.
GXPS-BOT-A0290	APIUM GRAVEOLENS (CELERY, UMBELLIFERAE); SEED, CS.
GXPS-BOT-A0291	ROOT; CS, MATURE (BUTTERCUP). (16-2)
GXPS-BOT-A0292	PHASEOLUS VULGARIS (BEAN, LEGUMINOSAE); PULVINUS, CS.
GXPS-BOT-A0293	PINUS; LEAF, CS, TWO-NEEDLE TYPE.
GXPS-BOT-A0294	NYMPHAEA ODORATA (WHITE WATER LILY, NYMPHAEACEAE); HYDROPHYTIC LEAF, CS, WITH LARGE STELLATE (IDIOBLASTIC) SCLEREIDS.
GXPS-BOT-A0296	ORCHID (TROPICAL ORCHID, ORCHIDACEAE); ROOT, CS, SHOWING WATER-ABSORBING VELAMEN.
GXPS-BOT-A0297	CUCURBITA PEPO (PUMPKIN, CUCURBITACEAE); STEM, LS FOR SIEVE TUBES (PHLOEM).
GXPS-BOT-A0299	GOODYERA (EPIPACTIS) PUBESCENS (RATTLESNAKE-PLANTAIN, ORCHIDACEAE); LEAF, CS FOR ALBESCENCE.
GXPS-BOT-A0300	CYRTOMIUM FALCATUM; SPORANGIA, WM.
GXPS-BOT-A0302	CAPSELLA BURSA-PASTORIS (SHEPHERD'S PURSE, CRUCIFERAE); FLOWER BUD, SECTION TO SHOW CAMPYLOTROPOUS OVULE.
GXPS-BOT-A0304	ABIES CONCOLOR (CONCOLOR FIR); LEAF WITH CICATRIX, LS.
GXPS-BOT-A0305	COEOPTILE; SECTIONS OF YOUNG SHOOT OF ZEA SEEDLING
GXPS-BOT-A0306	RICINUS COMMUNIS (CASTORBEAN, EUPHORBIACEAE); EXTRA-FLORAL NECTARY, LS (PETIOLE SECTION).
GXPS-BOT-A0307	CUSCUTA (DODDER, CONVOLVULACEAE); STEM & MEDIAN HAUSTORIUM, ON HOST CS.
GXPS-BOT-A0308	SELAGINELLA (SPIKE MOSS); STROBILUS, LS SHOWING MEGASPORES & MICROSPORES IN UNATTACHED SPORANGIA.
GXPS-BOT-A0309	PINUS; FEMALE STROBILUS, LS, SELECTED TO SHOW OVULE WITH MICROPYLE.

110 µm

GXPS-BOT-A0310	PINUS; ROOT, CS FOR ECTOTROPHIC MYCORRHIZA.
GXPS-BOT-A0313	ALLIUM CEPA (ONION, LILIACEAE); MITOCHONDRIA IN ROOT TIP, LS.
GXPS-BOT-A0315	VICIA FABA (BROAD BEAN, LEGUMINOSAE); ROOT TIP SQUASH, FOR MITOSIS.
GXPS-BOT-A0316	VICIA FABA (BROAD BEAN, LEGUMINOSAE); ROOT TIP SQUASH, MITOSIS CHEMICALLY ARRESTED AT METAPHASE, FEULGEN STAIN.
GXPS-BOT-A0317	PINUS; MALE STROBILUS WITH POLLEN, CS.
GXPS-BOT-A0318	ALLIUM CEPA (ONION, LILIACEAE); MITOCHONDRIA IN ROOT TIP, LS.
GXPS-BOT-A0319	CHLOROPLASTS & DEVELOPING STARCH; IN DICOT LEAF, CS
GXPS-BOT-A0320	RHAPHIDES; IN ALOE STEM OR LEAF, LS
GXPS-BOT-A0321	SECONDARY THICKENING; OF CELL WALLS IN DICOT STEM, CS
GXPS-BOT-A0322	PINE POLLEN CONE; LS.
GXPS-BOT-A0323	PHASEOLUS VULGARIS (BEAN, LEGUMINOSAE); FLOWER BUD, CS.
GXPS-BOT-A0325	DROSEROTA ROTUNDIFOLIA (SUNDEW, DROSERACEAE); LEAF, CS, WITH UNATTACHED DIGESTIVE GLANDS.
GXPS-BOT-A0326	VITIS (GRAPE, VITACEAE); LEAF, CS, WITH PHYLLOXERA (INSECT) GALL.
GXPS-BOT-A0327	TOMATO CROWN GALL (AGROBACTERIUM TUMEFACIENS); HYPERTROPHIED TOMATO STEM, SECTION.
GXPS-BOT-A0329	CABBAGE BLACK ROT (XANTHOMONAS CAMPESTRIS); BACTERIA IN VESSELS OF CABBAGE PETIOLE, FLORAL AXIS, OR OVARY, SECTION.

GXPS-BOT-SER2-SETD

**Botany Set, Series 2, Set D**  
**50 Prepared Slides in a Plastic Box**

110 µm

## GX Wolf Microscopes Prepared Slides

GXM Part Number	Description
<b>BOTANY</b>	
<b>General Botany - Series 2 Set E</b>	
GXPS-BOT-A0330	PLASMIDIOPHORA BRASSICAE; PLASMODIA & SPORES IN CABBAGE CLUB ROOT, C.S.
GXPS-BOT-A0331	PERONOSPORA PARASITICA; HAUSTORIA & SPORANGIOPHORES ON CAPSELLA STEM, SECTION.
GXPS-BOT-A0332	RHIZOCTONIA (CORTICIUM) SOLANI: PENETRATION STAGES ON CABBAGE LEAF, SECTION.
GXPS-BOT-A0333	RHIZOBIUM SP.; SOYBEAN ROOT WITH UNATTACHED NODULE, SECTION.
GXPS-BOT-A0334	STONE CELLS, SECTION.
GXPS-BOT-A0335	LEAF, C.S (SHOW THE FOVEOLATE STOMAS)
GXPS-BOT-A0336	PETIOLE L.S (SHOW THE ABSCISSION LAYER)
GXPS-BOT-A0337	STEM L.S (SHOW THE INTERCALARY MERISTEM)
GXPS-BOT-A0338	STEM C.S (SHOW THE COLLENCHYMA)
GXPS-BOT-A0339	STEM C.S (SHOW THE SCLERENCHYMA)
GXPS-BOT-A0340	STEM C.S (SHOW THE LENTICAL)
GXPS-BOT-A0341	STEM C.S (SHOW THE SIEVE PLATE)
GXPS-BOT-A0342	RANUNCULUS JAPONICUS STEM C.S
GXPS-BOT-A0343	STEM C.S (SHOW THE RESIN CANAL)
GXPS-BOT-A0344	STEM L.S (SHOW THE SIEVE TUBE)
GXPS-BOT-A0345	IRIS STEM C.S
GXPS-BOT-A0346	ARACHIS HYPOGAEA STEM C.S
GXPS-BOT-A0347	PELARGONIUM HORTORUM STEM C.S
GXPS-BOT-A0348	MOSS LIFE HISTORY

A microscopic image of plant tissue, likely a leaf cross-section, showing various cellular structures. A scale bar in the top right corner indicates a length of 110 µm. The image is used as a background for the product listing table.

110 µm

GXPS-BOT-A0349	PINE LIFE HISTORY
GXPS-BOT-A0350	HERBAGE & WOODY STEM C.S
GXPS-BOT-A0351	MONOCOT & DICOT LEAF EPIDERMIS
GXPS-BOT-A0352	ORYZA SATIVA STOMA, W.M
GXPS-BOT-A0353	MONOCOT & DICOT FLOWERS
GXPS-BOT-A0354	NARCISSUS TAZETTA OVARY L.S
GXPS-BOT-A0355	SUGARCANE LEAF C.S
GXPS-BOT-A0356	MONOCOT & DICOT ROOTS C.S.
GXPS-BOT-A0357	MONOCOT & DICOT STEMS C.S.
GXPS-BOT-A0358	MONOCOT & DICOT LEAVES C.S.

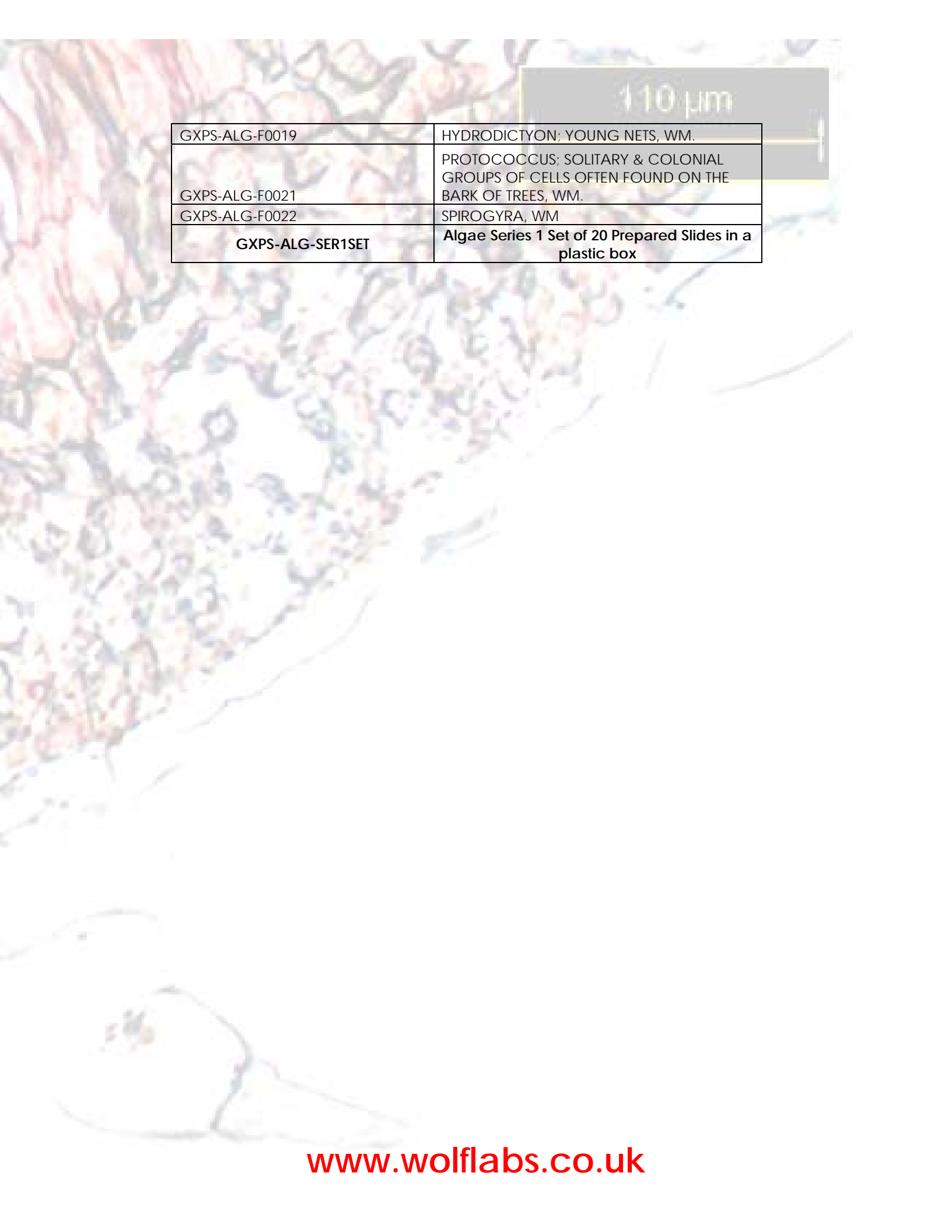
<b>GXPS-BOT-SER2-SET E</b>	<b>Botany Set, Series 2, Set E 29 Prepared Slides in a Plastic Box</b>
----------------------------	--

<b>GXPS-BOT-SER2SET</b>	<b>Botany Set, Series 2, Set E 229 Prepared Slides in a Plastic Boxes Includes Series 2 sets A,B,C,D &amp; E</b>
-------------------------	--

110 µm

## GX Wolf Microscopes Prepared Slides

GXM Part Number	Description
<b>BOTANY</b>	
<b>ALGAE Series 1</b>	
GXPS-ALG-F0001	OEDOGONIUM; WM.
GXPS-ALG-F0002	SPIROGYRA; VEGETATIVE & CONJUGATING, WM.
GXPS-ALG-F0003	OSCILLATORIA; FILAMENTS APPARENTLY WITHOUT SHEATHS, WM.
GXPS-ALG-F0004	CHLAMYDOMONAS; VEGETATIVE & VEGETATIVE REPRODUCTIVE FORMS, WM.
GXPS-ALG-F0005	DIATOMS; MIXED FRESH WATER SPECIES, PROTOPLASTS STAINED, WM.
GXPS-ALG-F0006	SPIROGYRA; LARGE SPECIES WITH MULTIPLE CHLOROPLASTS DEMONSTRATING SCALARIFORM CONJUGATION & VEGETATIVE FILAMENTS, WM.
GXPS-ALG-F0007	VOLVOX; COLONIES WITH VEGETATIVE & SEXUAL STAGES, WM.
GXPS-ALG-F0008	HYDRODICTYON; YOUNG NETS, WM.
GXPS-ALG-F0009	LAMINARIA; BLADE WITH SPORANGIA, SECTION.
GXPS-ALG-F0010	ANABAENOPSIS; SHORT COILED FILAMENTS WITH TERMINAL HETEROCYSTES, WM.
GXPS-ALG-F0011	ARTHROSPIRA; SPIRAL FILAMENTS WITH TRANSVERSE SEPTATIONS, WM.
GXPS-ALG-F0012	LYNGBYA; SEPARATE FILAMENTS WITHIN A COMMON, PERSISTENT SHEATH, WM.
GXPS-ALG-F0013	WASSERBLUETHE (WATER BLOOM); MIXTURE OF FREE-FLOATING BLUE-GREENS WHICH SUDDENLY OCCUR IN GREAT PROFUSION ON THE SURFACE OF INLAND LAKES, WM. (INCLUDES ANABAENA, MICROCYSTIS, & COELOSPHAERIUM)
GXPS-ALG-F0014	BULBOCHAETE; UNILATERALLY BRANCHED FILAMENTS, MOST CELLS BEARING A LONG SETA WITH A SWOLLEN BASE, WM.
GXPS-ALG-F0016	DESMIDS; MIXED, WM. SEE LISTINGS FOR INDIVIDUAL DESMIDS: CLOSTERIUM, COSMARIUM, DESMIDIUM, MICRASTERIAS, PLEUROTAENIUM & STAUSTRUM.
GXPS-ALG-F0017	DIATOMS; MIXED FRESH WATER SPECIES, PROTOPLASTS STAINED, WM.
GXPS-ALG-F0018	ENTEROMORPHA; HOLLOW THALLUS, WM.



110  $\mu\text{m}$

GXPS-ALG-F0019	HYDRODICTYON; YOUNG NETS, WM.
GXPS-ALG-F0021	PROTOCOCCUS; SOLITARY & COLONIAL GROUPS OF CELLS OFTEN FOUND ON THE BARK OF TREES, WM.
GXPS-ALG-F0022	SPIROGYRA, WM
<b>GXPS-ALG-SER1SET</b>	<b>Algae Series 1 Set of 20 Prepared Slides in a plastic box</b>

110 µm

## GX Wolf Microscopes Prepared Slides

GXM Part Number	Description
<b>BOTANY</b>	
<b>ALGAE Series 2 ALGAE CYANOPHYCEAE</b>	
GXPS-ALG-CYANOPH-1	Acetabularia W.M.
GXPS-ALG-CYANOPH-2	Botrydium W.M.
GXPS-ALG-CYANOPH-3	Bryopsis W.M.
GXPS-ALG-CYANOPH-4	Chlamydomonas W.M.
GXPS-ALG-CYANOPH-5	Chara vegetative W.M.
GXPS-ALG-CYANOPH-6	Chara reproductive
GXPS-ALG-CYANOPH-7	Chara sexual V.S
GXPS-ALG-CYANOPH-8	Chlorella W.M.
GXPS-ALG-CYANOPH-9	Closterium W.M.
GXPS-ALG-CYANOPH-10	Codium
GXPS-ALG-CYANOPH-11	Cosmarium W.M.
GXPS-ALG-CYANOPH-12	Coleochaete W.M.
GXPS-ALG-CYANOPH-13	Desmids Mixed W.M.
GXPS-ALG-CYANOPH-14	Diatoms pinnate
GXPS-ALG-CYANOPH-15	Diatom centric
GXPS-ALG-CYANOPH-16	Fristichella W.M.
GXPS-ALG-CYANOPH-17	Hydrodictyon W.M.
GXPS-ALG-CYANOPH-18	Halimeda W.M.
GXPS-ALG-CYANOPH-19	Oedogonium vegetative
GXPS-ALG-CYANOPH-20	Oedogonium macrandrous W.M.
GXPS-ALG-CYANOPH-21	Oedogonium nannandrous W.M.
GXPS-ALG-CYANOPH-22	Oedogonium oogonial W.M.
GXPS-ALG-CYANOPH-23	Pandorina W.M.
GXPS-ALG-CYANOPH-24	Pithophora W.M.
GXPS-ALG-CYANOPH-25	Spirogyra Veg.
GXPS-ALG-CYANOPH-26	Spirogyra scalariform conj. W.M.
GXPS-ALG-CYANOPH-27	Spirogyra lateral cong. W.M.
GXPS-ALG-CYANOPH-28	Ulothrix vegetative W.M.
GXPS-ALG-CYANOPH-29	Ulothrix reproductive W.M.
GXPS-ALG-CYANOPH-30	Ulva thallus W.M.
GXPS-ALG-CYANOPH-31	Vaucheria vegetative W.M.
GXPS-ALG-CYANOPH-32	Vaucheria reproductive W.M.
GXPS-ALG-CYANOPH-33	Volvox daughter
GXPS-ALG-CYANOPH-34	Volvox daughter colony W.M.
GXPS-ALG-CYANOPH-35	Volvox oogonial colony W.M.
GXPS-ALG-CYANOPH-36	Volvox antheridial colony W.M.
GXPS-ALG-CYANOPH-37	Volvox zygote colony W.M.
GXPS-ALG-CYANOPH-38	Zygnema vegetative W.M.
GXPS-ALG-CYANOPH-39	Zygnema conjugation W.M.
<b>GXPS-ALG-SER2SET</b>	<b>ALGAE Series 2 ALGAE CYANOPHYCEAE Set of 39 Prepared Slides in a plastic box</b>

110 µm

**GX Wolf Microscopes  
Prepared Slides**

GXM Part Number	Description
<b>BOTANY</b>	
<b>ALGAE Series 3 ALGAE PHAEOPHYCEAE ( BROWN ALGAE)</b>	
GXPS-ALG-PHAEPHYC-1	Corallina W.M.
GXPS-ALG-PHAEPHYC-2	Dictyota apical dichotomy
GXPS-ALG-PHAEPHYC-3	Dictyota oogonial thallus VS
GXPS-ALG-PHAEPHYC-4	Dictyota antheridial thallus VS
GXPS-ALG-PHAEPHYC-5	Dictyota tetrasporic thallus
GXPS-ALG-PHAEPHYC-6	Ectocarpus unilocular W.M.
GXPS-ALG-PHAEPHYC-7	Ectocarpus plurilocular W.M.
GXPS-ALG-PHAEPHYC-8	Fucus thallus TS
GXPS-ALG-PHAEPHYC-9	Fucus male conceptacle VS
GXPS-ALG-PHAEPHYC-10	Fucus female conceptacle VS
GXPS-ALG-PHAEPHYC-11	Saragassum thallus (leaf) TS
GXPS-ALG-PHAEPHYC-12	Saragassum male conceptacle TS
GXPS-ALG-PHAEPHYC-13	Saragassum female conceptacle TS
GXPS-ALG-PHAEPHYC-14	Saragassus Bladder TS
<b>GXPS-ALG-SER3SET</b>	<b>ALGAE Series 3 ALGAE PHAEOPHYCEAE ( BROWN ALGAE) Set of 14 Prepared Slides in a plastic box</b>

A microscopic image of red algae, showing various cellular structures and pigments. A scale bar in the top right corner indicates 10 µm. The image is overlaid with a table of product information.

10 µm

**GX Wolf Microscopes  
Prepared Slides**

GXM Part Number	Description
<b>BOTANY</b>	
<b>ALGAE Series 4 ALGAE RHODOPHYCEAE (RED ALGAE)</b>	
GXPS-ALG-RHODO-1	Batrachospermum Veg. W.M.
GXPS-ALG-RHODO-2	Batrachospermum fruiting W.M.
GXPS-ALG-RHODO-3	Polysiphonia antheridial W.M.
GXPS-ALG-RHODO-4	Polysiphonia cystocarp W.M.
GXPS-ALG-RHODO-5	Polysiphonia tetrasporic W.M.
GXPS-ALG-RHODO-6	Polysiphonia vegetative W.M.
<b>GXPS-ALG-SER4SET</b>	<b>ALGAE Series 4 ALGAE RHODOPHYCEAE (RED ALGAE) Set of 6 Prepared Slides in a plastic box</b>

110 µm

## GX Wolf Microscopes Prepared Slides

GXM Part Number	Description
<b>BOTANY</b>	
<b>PLANT PATHOLOGY – Premiere Set</b>	
GXPS-PLANT PATH-C0001	PUCCINIA GRAMINIS (WHEAT RUST); UREDINIA, TELIA, AECIA & SPERMOGONIA ON THE SAME SLIDE, SECTIONS.
GXPS-PLANT PATH-C0002	PUCCINIA GRAMINIS (WHEAT RUST); UREDINIA ON TRITICUM LEAF OR STEM, SECTION.
GXPS-PLANT PATH-C0003	PHYTOPHTHORA INFESTANS (LATE BLIGHT OF POTATO); IN LYCOPERSICUM FRUIT, SECTION.
GXPS-PLANT PATH-C0004	ALBUGO PORTULACAE; ON PORTULACA, SECTION.
GXPS-PLANT PATH-C0005	PERONOSPORA PARASITICA; HAUSTORIA & SPORANGIOPHORES ON CAPSELLA STEM, SECTION.
GXPS-PLANT PATH-C0006	VENTURIA INAEQUALIS (APPLE SCAB); ASCOCARP, NON-MEDIAN LS.
GXPS-PLANT PATH-C0010	FUSARIUM OXYSPORUM F. CONGLUTINANS; HYPHAE IN VESSELS OF CABBAGE STEM OR PETIOLE, SECTION.
GXPS-PLANT PATH-C0011	COLLETOTRICHUM LAGENARIUM; ON CITRULLUS, SECTION.
GXPS-PLANT PATH-C0012	SEPTORIA APII (CELERY LATE BLIGHT); PYCNIDIA, SECTION.
GXPS-PLANT PATH-C0013	PLASMIDIOPHORA BRASSICAE; PLASMODIA & SPORES IN CABBAGE CLUB ROOT, CS.
GXPS-PLANT PATH-C0015	BEAN BLIGHT (XANTHOMONAS PHASEOLI); POD LESIONS, SECTION.
GXPS-PLANT PATH-C0016	SOFT ROT (ERWINIA CAROTOVORA); LESIONS IN CARROT ROOT OR CABBAGE LEAF, SECTION.
GXPS-PLANT PATH-C0017	ERYSIPHE AGGREGATA; CLEISTOTHECIA ON ALDER CATKIN, SECTION.
GXPS-PLANT PATH-C0020	MONILINIA (SCLEROTINIA) FRUCTICOLA (PLUM BROWN ROT); CONIDIAL LESIONS ON PLUM FRUIT, SECTION.
GXPS-PLANT PATH-C0022	GYMNOSPORANGIUM JUNIPERIVIRGINIANAE (APPLE RUST); AECIA ON APPLE LEAF, LS.
GXPS-PLANT PATH-C0024	SOFT ROT (ERWINIA CAROTOVORA); LESIONS IN CARROT ROOT OR CABBAGE LEAF, SECTION.



GXPS-PLANT PATH-C0025	ALTERNARIA (MACROSPORIUM) SOLANI; CONIDIAL LESIONS ON TOMATO FRUIT, SECTION.
GXPS-PLANT PATH-C0026	PHYTOPHTHORA INFESTANS (LATE BLIGHT OF POTATO); SPORANGIOPHORES ON LEAF, SECTION.
GXPS-PLANT PATH-C0027	POTATO MOSAIC; INFECTED LEAF, SECTION.
GXPS-PLANT PATH-C0028	SPONGOSPORA SUBTERRANEA; SPORE BALLS IN POTATO TUBER, SECTION (POTATO POWDERY SCAB).
GXPS-PLANT PATH-C0029	GLOMERELLA CINGULATA; ASCIGEROUS STROMA, SECTION.
GXPS-PLANT PATH-C0030	APPLE BITTER PIT; FRUIT LESIONS (PHYSIOLOGICAL), SECTION.
GXPS-PLANT PATH-C0031	GYMNOSPORANGIUM JUNIPERVIRGINIANAE (APPLE RUST); AECIA ON APPLE LEAF, LS.
GXPS-PLANT PATH-C0032	VENTURIA INAEQUALIS (APPLE SCAB); CONIDIAL LESION ON APPLE FRUIT, SECTION.
GXPS-PLANT PATH-C0033	CERCOSPORA ROSICOLA; ON ROSA, SECTION.
GXPS-PLANT PATH-C0034	PUCCINIA DISPERSA; ON SECALE, SECTION.
GXPS-PLANT PATH-C0035	CUCUMBER DOWNY MILDEW
GXPS-PLANT PATH-C0036	CUCUMBER POWDERY MILDEW
GXPS-PLANT PATH-C0037	WATERMELON ANTHRACNOSE
GXPS-PLANT PATH-C0038	RADISH SOFT ROT
GXPS-PLANT PATH-C0039	GLOEOSPORIUM MUSARUM COOKE ET MASS.
GXPS-PLANT PATH-C0040	SPHACELOMA FAWCETTI JENK
GXPS-PLANT PATH-C0041	ALTERNARIA CITRI ELLIS ET PIERCE
GXPS-PLANT PATH-C0042	CONIOTHYRIUM DIPLODIELLA (SPEG.) SACC.
GXPS-PLANT PATH-C0043	PHYLLOSTICTA ERIOBOTRYAE THUEM
GXPS-PLANT PATH-C0044	PSEUDOPERONOSPORA LITCHI
GXPS-PLANT PATH-C0045	ORYZA SATIVA BLAST
GXPS-PLANT PATH-C0046	TRITICUM AESTIVUM RUST
GXPS-PLANT PATH-C0047	IPOMOEA BATATAS SCAB
GXPS-PLANT PATH-C0048	TRITICUM AESTIVUM RUST DUSTBRAND
<b>GXPS-PLPATH-PREMSET</b>	<b>Premiere Plant Pathology Set of 40 Prepared Slides in a plastic box</b>

110 µm

**GX Wolf Microscopes  
Prepared Slides**

GXM Part Number	Description
<b>BOTANY</b>	

<b>PHYCO MYCETES</b>	
GXPS-PHYCO MYCETES-1	Cystopus conidia VS
GXPS-PHYCO MYCETES-2	Cystopus sex organs VS
GXPS-PHYCO MYCETES-3	Cystopus zygote VS
GXPS-PHYCO MYCETES-4	Mucor veg. W.M.
GXPS-PHYCO MYCETES-5	Mucor sporangia W.M.
GXPS-PHYCO MYCETES-6	Mucor (Zygote) W.M
GXPS-PHYCO MYCETES-7	Pythium W.M.
GXPS-PHYCO MYCETES-8	Rhizopus veg. W.M.
GXPS-PHYCO MYCETES-9	Rhizopus sporangia W.M.
GXPS-PHYCO MYCETES-10	Rhizopus sexual WM
GXPS-PHYCO MYCETES-11	Rhizopus zygospore WM
<b>GXPS-PHYCOMY-SET</b>	<b>Phyco Mycetes Set of 11 Prepared Slides in a plastic box</b>

<b>ASCOMYCETES</b>	
GXPS-ASCOMYCETES-1	Aspergillus (Euratum) conidia
GXPS-ASCOMYCETES-2	Morchella TS
GXPS-ASCOMYCETES-3	Penicillium veg. TS
GXPS-ASCOMYCETES-4	Penicilliu conidial
GXPS-ASCOMYCETES-5	Peziza apothecia VS
GXPS-ASCOMYCETES-6	Yeast budding
GXPS-ASCOMYCETES-7	Yeast cell
<b>GXPS-ASCOMY-SET</b>	<b>Ascomycetes Set of 7 Prepared Slides in a plastic box</b>



10 µm

## GX Wolf Microscopes Prepared Slides

GXM Part Number	Description
-----------------	-------------

### BOTANY

BASIDIOMYCETES	
GXPS-BASIDIOMYCETES-1	Agricus stipe TS
GXPS-BASIDIOMYCETES-2	Agaricus pileus VS
GXPS-BASIDIOMYCETES-3	Puccinia uredo on wheat leaf TS
GXPS-BASIDIOMYCETES-4	Puccinia teleuto on wheat stem TS
GXPS-BASIDIOMYCETES-5	Puccinia aecidia on barbery leaf
GXPS-BASIDIOMYCETES-6	Puccinia pycnia VS
GXPS-BASIDIOMYCETES-7	Ustilago spores W.M.
<b>GXPS-BASIDIOMY-SET</b>	<b>Basidiomycetes Set of 7 Prepared Slides in a plastic box</b>

DEUTEROMYCETES	
GXPS-DEUTEROMYCETES-1	Alternaria
GXPS-DEUTEROMYCETES-2	Cercospora
GXPS-DEUTEROMYCETES-3	Fusarium
GXPS-DEUTEROMYCETES-4	Aspergillus (Euratum) conidia
<b>GXPS-DTEROMY-SET</b>	<b>Dueteromycetes Set of 4 Prepared Slides in a plastic box</b>

110 µm

**GX Wolf Microscopes  
Prepared Slides**

GXM Part Number	Description
<b>BOTANY</b>	

<b>FUNGI</b>	
GXPS-MYC-E0001	SACCHAROMYCES (YEAST); BUDDING CELLS, WM.
GXPS-MYC-E0002	COPRINUS (MUSHROOM); ENTIRE PILEUS, CS.
GXPS-MYC-E0003	MOLD TYPES; SPORANGIAL FORMS OF RHIZOPUS, ASPERGILLUS, & PENICILLIUM ON THE SAME SLIDE, WM.
GXPS-MYC-E0004	RHIZOPUS STOLONIFER; SPORANGIA & ZYGOTES ON THE SAME SLIDE, WM.
GXPS-MYC-E0005	PENICILLIUM; MYCELIUM WITH CONIDIOPHORES, WM.
GXPS-MYC-E0006	MUCOR; MYCELIUM WITH ZYGOTES, WM.
<b>GXPS-FUNGI-SET</b>	<b>Mycology Set of 6 Prepared Slides in a plastic box</b>

<b>LICHENS</b>	
GXPS-LICHENS-1	Lichen thallus TS
GXPS-LICHENS-2	Lichen thallus W.M.
GXPS-LICHENS-3	Lichen soredia W.M.
GXPS-LICHENS-4	Lichen apothecium VS..
<b>GXPS-LICHEN-SET</b>	<b>Lichens Set of 4 Prepared Slides in a plastic box</b>

110 µm

## GX Wolf Microscopes Prepared Slides

GXM Part Number	Description
<b>BOTANY</b>	
<b>BRYOPHYTA</b>	
GXPS-BRYOPHYTA-1	Anthoceros thallus LS/TS
GXPS-BRYOPHYTA-2	Funaria antheridia VS/W.M
GXPS-BRYOPHYTA-3	Funaria archegonia VS/W.M.
GXPS-BRYOPHYTA-4	Funaria capsule LS/TS
GXPS-BRYOPHYTA-5	Marchantia thallus TS
GXPS-BRYOPHYTA-6	Marchantia gemmae cup VS
GXPS-BRYOPHYTA-7	Marchantia antheridial head VS
GXPS-BRYOPHYTA-8	Marchantia archegonial head VS
GXPS-BRYOPHYTA-9	Marchantia sporophyte VS
GXPS-BRYOPHYTA-10	Moss leaf W.M./T.S.
GXPS-BRYOPHYTA-11	Moss stem TS
GXPS-BRYOPHYTA-12	Moss archegonial head VS/W.M.
GXPS-BRYOPHYTA-13	Moss antheridial W.M./V.S
GXPS-BRYOPHYTA-14	Moss capsule LS/TS
GXPS-BRYOPHYTA-15	Moss peristome
GXPS-BRYOPHYTA-16	Moss plant with capsule W.M.
GXPS-BRYOPHYTA-17	Riccia thallus TS/W.M.
GXPS-BRYOPHYTA-18	Riccia antheridial VS
GXPS-BRYOPHYTA-19	Riccia archegonial VS
GXPS-BRYOPHYTA-20	Riccia mature sporophyte VS
GXPS-BRYOPHYTA-21	Riccia zygote TS
<b>GXPS-BRYO-SET</b>	<b>Bryophyta Set of 21 Prepared Slides in a plastic box</b>

110 µm

## GX Wolf Microscopes Prepared Slides

GXM Part Number	Description
<b>BOTANY</b>	
<b>PTERIDOPHYTES</b>	
GXPS-PTERIDOPHYTES-1	Adiantum rhizome TS
GXPS-PTERIDOPHYTES-2	Adiantum root TS
GXPS-PTERIDOPHYTES-3	Equisetum root TS
GXPS-PTERIDOPHYTES-4	Equisetum rhizome TS
GXPS-PTERIDOPHYTES-5	Equisetum stem TS
GXPS-PTERIDOPHYTES-6	Fern rhizome TS
GXPS-PTERIDOPHYTES-7	Fern prothallus young
GXPS-PTERIDOPHYTES-8	Fern prothallus with antheridia
GXPS-PTERIDOPHYTES-9	Fern prothallus with archegonia
GXPS-PTERIDOPHYTES-10	Fern prothallus with sporophyte
GXPS-PTERIDOPHYTES-11	Fern leaf with sort TS
GXPS-PTERIDOPHYTES-12	Fern sori W.M.
GXPS-PTERIDOPHYTES-13	Fern prothallus TS
GXPS-PTERIDOPHYTES-14	Fern Rachis
GXPS-PTERIDOPHYTES-15	Fern root TS
GXPS-PTERIDOPHYTES-16	Isoetes stem TS
GXPS-PTERIDOPHYTES-17	isoetes root TS
GXPS-PTERIDOPHYTES-18	Lycopodium stem TS
GXPS-PTERIDOPHYTES-19	Marsilea leaf TS
GXPS-PTERIDOPHYTES-20	Marsilea root TS
GXPS-PTERIDOPHYTES-21	Marsilea rhizome TS
GXPS-PTERIDOPHYTES-22	Marsilea petiole TS
GXPS-PTERIDOPHYTES-23	Marsilea sporocarp TS/LS
GXPS-PTERIDOPHYTES-24	Marsilea sorus W.M.
GXPS-PTERIDOPHYTES-25	Selaginella root TS
GXPS-PTERIDOPHYTES-26	Selaginella leaf W.M./TS
GXPS-PTERIDOPHYTES-27	Selaginella TS
GXPS-PTERIDOPHYTES-28	Selaginella microsporangia
<b>GXPS-PTERI-SET</b>	<b>Pteridophytes Set of 28 Prepared Slides in a plastic box</b>

110  $\mu\text{m}$ 

## GX Wolf Microscopes Prepared Slides

GXM Part Number	Description
<b>BOTANY</b>	

<b>GYMNOSPERM</b>	
GXPS-GYMNOSPERM-1	Cycas normal root TS
GXPS-GYMNOSPERM-2	Cycas coralloid root TS
GXPS-GYMNOSPERM-3	Cycas Leaflet(Pinna) TS
GXPS-GYMNOSPERM-4	Cycas rachis TS
GXPS-GYMNOSPERM-5	Cycas microsporophyll TS
GXPS-GYMNOSPERM-6	Cycas megasporophyll TS
GXPS-GYMNOSPERM-7	Cycas ovule LS
GXPS-GYMNOSPERM-8	Pinus root TS
GXPS-GYMNOSPERM-9	Pinus young stem TS/W.M.
GXPS-GYMNOSPERM-10	Pinus stem RLS/TS
GXPS-GYMNOSPERM-11	Pinus male cone TS/LS
GXPS-GYMNOSPERM-12	Pinus pollen grain W.M.
GXPS-GYMNOSPERM-13	Pinus female cone TS/LS
GXPS-GYMNOSPERM-14	Pinus needle TS
GXPS-GYMNOSPERM-15	Thuja stem TS
GXPS-GYMNOSPERM-16	Gnetum stem TS
GXPS-GYMNOSPERM-17	Gnetum leaf TS
GXPS-GYMNOSPERM-18	Gnetum male cone TS/LS
GXPS-GYMNOSPERM-19	Gnetum female cone TS/LS
<b>GXPS-GYMNO-SET</b>	<b>Gymnosperm Set of 19 Prepared Slides in a plastic box</b>

<b>ANGIOSPERM</b>	
GXPS-ANGIOSPERM-1	Typical plant cell
GXPS-ANGIOSPERM-2	Tradescantia epidermal hairs
GXPS-ANGIOSPERM-3	Allium root apex
GXPS-ANGIOSPERM-4	Starch grains eccentric
GXPS-ANGIOSPERM-5	Starch grains concentric
GXPS-ANGIOSPERM-6	Bean cotyledon TS
GXPS-ANGIOSPERM-7	Compound starch grains
GXPS-ANGIOSPERM-8	Aleurone layers, grains TS
GXPS-ANGIOSPERM-9	Tanin cell
<b>GXPS-ANGIO-SET</b>	<b>Angiosperm Set of 9 Prepared Slides in a plastic box</b>

110 µm

**GX Wolf Microscopes  
Prepared Slides**

GXM Part Number	Description
<b>BOTANY</b>	

<b>PLANT TISSUE SLIDES</b>	
GXPS-PLANT-TISSUE-1	Apical stem meristem LS
GXPS-PLANT-TISSUE-2	Arenchyma TS or W.M.
GXPS-PLANT-TISSUE-3	Collenchyma TS or W.M.
GXPS-PLANT-TISSUE-4	Sclerenchyma TS or W.M.
GXPS-PLANT-TISSUE-5	Chlorenchyma TS or W.M.
GXPS-PLANT-TISSUE-6	Parenchyma TS or W.M.
GXPS-PLANT-TISSUE-7	Stone cells TS
GXPS-PLANT-TISSUE-8	Glandular tissue nectary VS
GXPS-PLANT-TISSUE-9	Latex cells TS
GXPS-PLANT-TISSUE-10	Oil cavities, citrus fruit VS
GXPS-PLANT-TISSUE-11	Xylem elements proto & meta TS
GXPS-PLANT-TISSUE-12	Phloem elements
GXPS-PLANT-TISSUE-13	Sieve tubes
GXPS-PLANT-TISSUE-14	Unicellular hairs W.M.
GXPS-PLANT-TISSUE-15	Multicellular hairs W.M.
GXPS-PLANT-TISSUE-16	Stellite hairs W.M.
GXPS-PLANT-TISSUE-17	Glandular hairs W.M.
GXPS-PLANT-TISSUE-18	Stinging hairs W.M.
GXPS-PLANT-TISSUE-19	Resin canal
GXPS-PLANT-TISSUE-20	Wheat grains TS
GXPS-PLANT-TISSUE-21	Maize grains TS
GXPS-PLANT-TISSUE-22	Paddy grains TS
GXPS-PLANT-TISSUE-23	Stomata
GXPS-PLANT-TISSUE-24	Stomata open
GXPS-PLANT-TISSUE-25	Stomata closed
GXPS-PLANT-TISSUE-26	Stomata dicot
GXPS-PLANT-TISSUE-27	Stomata monocot
<b>GXPS-PLTIS-SET</b>	<b>Plant Tissue Set of 27 Prepared Slides in a plastic box</b>

110 µm

## GX Wolf Microscopes Prepared Slides

GXM Part Number	Description
-----------------	-------------

### BOTANY

DICOTYLEDON STEM	
GXPS-DICOT-STEM-1	Dicot stem TS
GXPS-DICOT-STEM-2	Achyranthus stem TS
GXPS-DICOT-STEM-3	Amaranthus stem TS
GXPS-DICOT-STEM-4	Brassica (mustard) stem TS
GXPS-DICOT-STEM-5	Cucurbita old stem TS
GXPS-DICOT-STEM-6	Cucurbita stem LS
GXPS-DICOT-STEM-7	Cucurbita with host TS
GXPS-DICOT-STEM-8	Helianthus old stem TS
GXPS-DICOT-STEM-9	Euphorbia stem TS
GXPS-DICOT-STEM-10	Xanthium stem TS
<b>GXPS-DICOTSTEM-SET</b>	<b>Dicotyledon Stem Set of 10 Prepared Slides in a plastic box</b>

DICOTYLEDON ROOT	
GXPS-DICOT-ROOT-1	Beet root TS
GXPS-DICOT-ROOT-2	Brassica root TS
GXPS-DICOT-ROOT-3	Cucurbita root TS
GXPS-DICOT-ROOT-4	Dicot root primary TS
GXPS-DICOT-ROOT-5	Dicot TS commencement of sec.growth
GXPS-DICOT-ROOT-6	Dicot root old TS
GXPS-DICOT-ROOT-7	Helianthus root TS/LS
GXPS-DICOT-ROOT-8	Legume root with nodules TS
<b>GXPS-DICOTROOT-SET</b>	<b>Dicotyledon Root Set of 8 Prepared Slides in a plastic box</b>

MONOCOTYLEDON STEM	
GXPS-MONOCOT-STEM-1	Asparagus TS
GXPS-MONOCOT-STEM-2	Hydrilla stem TS
GXPS-MONOCOT-STEM-3	Maize mature stem TS
GXPS-MONOCOT-STEM-4	Maize stem LS
GXPS-MONOCOT-STEM-5	Ruscus stem TS
GXPS-MONOCOT-STEM-6	Triticum (wheat) stem TS
<b>GXPS-MONSTEM-SET</b>	<b>Monocotyledon Stem Set of 6 Prepared Slides in a plastic box</b>

MONOCOTYLEDON ROOT	
GXPS-MONOCOT-ROOT-1	Maize root TS
GXPS-MONOCOT-ROOT-2	Maize root LS
GXPS-MONOCOT-ROOT-3	Asparagus root TS
<b>GXPS-MONROOT-SET</b>	<b>Monocotyledon Root Set of 3 Prepared Slides in a plastic box</b>

110  $\mu\text{m}$ 

## GX Wolf Microscopes Prepared Slides

GXM Part Number	Description
<b>BOTANY</b>	
<b>DICOTYLEDON LEAVES</b>	
GXPS-DICOT-LEAF-1	Bryophyllum leaf T.S
GXPS-DICOT-LEAF-2	Drosera leaf W.M.
GXPS-DICOT-LEAF-3	Docot leaf TS
GXPS-DICOT-LEAF-4	Ficus leaf LS
GXPS-DICOT-LEAF-5	Helianthus leaf TS
GXPS-DICOT-LEAF-6	Cucurbita leaf TS
GXPS-DICOT-LEAF-7	Xerophytic leaf TS
GXPS-DICOT-LEAF-8	Hydrophytic leaf TS
GXPS-DICOT-LEAF-9	Nerium leaf TS(Sunken stomata)
GXPS-DICOT-LEAF-10	Stem apex LS origin of leaves
GXPS-DICOT-LEAF-11	Ultricularia W.M.
<b>GXPS-DICOTLEAF-SET</b>	<b>Dicotyledon Leaf Set of 11 Prepared Slides in a plastic box</b>
<b>MONOCOTYLEDON LEAVES</b>	
GXPS-MONOCOT-LEAF-1	Allium leaf TS
GXPS-MONOCOT-LEAF-2	Dracaena leaf TS
GXPS-MONOCOT-LEAF-3	Hydrilla leaf TS
GXPS-MONOCOT-LEAF-4	Maize leaf Ts
GXPS-MONOCOT-LEAF-5	Eichornia leaf TS
GXPS-MONOCOT-LEAF-6	Monocot typical leaf TS
GXPS-MONOCOT-LEAF-7	Triticum (wheat) leaf TS
<b>GXPS-MONOTLEAF-SET</b>	<b>Monotyledon Leaf Set of 7 Prepared Slides a plastic box</b>
<b>COMPARATIVE STUDY SLIDES</b>	
GXPS-MONDICOT-COMP-1	Dicot and Monocot stem on the same slide
GXPS-MONDICOT-COMP-2	Monocot and Dicot root TS on same slide
GXPS-MONDICOT-COMP-3	Dicot and Monocot leaf TS on same slide
<b>GXPS-COMPSTUD-SET</b>	<b>Comparative Set of 3 Prepared Slides in a plastic box</b>
<b>VASCULAR BUNDLES TYPE</b>	
GXPS-VASC-1	Radial
GXPS-VASC-2	Conjoint collateral open
GXPS-VASC-3	Conjoint collateral close
GXPS-VASC-4	Conjoint bicollateral
GXPS-VASC-5	Concentric Amphivasal
GXPS-VASC-6	Concentric Aphicribal
<b>GXPS-VASBUN-SET</b>	<b>Vascular (Botany) Set of 6 Prepared Slides in a plastic box</b>

110  $\mu\text{m}$ 

## GX Wolf Microscopes Prepared Slides

GXM Part Number	Description
<b>BOTANY</b>	

<b>FLORAL MORPHOLOGY</b>	
GXPS-FL-MORPH-1	Anther W.M./TS
GXPS-FL-MORPH-2	Epigynous flower LS
GXPS-FL-MORPH-3	Hypogynous flower LS
GXPS-FL-MORPH-4	Perigynous flower LS
GXPS-FL-MORPH-5	Pollen grains germinating
GXPS-FL-MORPH-6	Typical flower bud LS
GXPS-FL-MORPH-7	Typical flower bud TS
<b>GXPS-FLORMOR-SET</b>	<b>Floral Morphology Set of 7 Prepared Slides in a plastic box</b>

<b>OVARY</b>	
GXPS-PLANT-OV-1	Argemone ovary TS
GXPS-PLANT-OV-2	Brassica ovary TS
GXPS-PLANT-OV-3	Datura ovary TS
GXPS-PLANT-OV-4	Helianthus ovary TS
GXPS-PLANT-OV-5	Hibiscus ovary TS
GXPS-PLANT-OV-6	Nelumbium ovary TS
<b>GXPS-OVARY-SET</b>	<b>Plant Ovary Set of 6 Prepared Slides in a plastic box</b>

<b>TYPE OF OVULES</b>	
GXPS-OVULES-1	Amphitropous
GXPS-OVULES-2	Anatropous
GXPS-OVULES-3	Campylotropous
GXPS-OVULES-4	Orthotropous
GXPS-OVULES-5	Circinotropous
<b>GXPS-OVULES-SET</b>	<b>Ovules Set of 5 Prepared Slides in a plastic box</b>

<b>PLACENTATION</b>	
GXPS-PLACENTATION-1	Axite placentation
GXPS-PLACENTATION-2	Basal placentation
GXPS-PLACENTATION-3	Free central placentation
GXPS-PLACENTATION-4	Marginal placentation
GXPS-PLACENTATION-5	Parietal placentation
GXPS-PLACENTATION-6	Superficial placentation
<b>GXPS-PLAC-SET</b>	<b>Placentation Set of 6 Prepared Slides in a plastic box</b>



110 µm

## GX Wolf Microscopes Prepared Slides

GXM Part Number	Description
<b>BOTANY</b>	

INFLORESCENCES	
GXPS-INFLO-1	Receme VS
GXPS-INFLO-2	Spike LS
GXPS-INFLO-3	Sun flower capitulum
GXPS-INFLO-4	Cyathium inflorescence
<b>GXPS-INFLO-SET</b>	<b>Inflorescences Set of 4 Prepared Slides in a plastic box</b>

SUNFLOWER EMBRYOLOGY	
GXPS-SUNFEMB-1	Pollen grain W.M.
GXPS-SUNFEMB-2	Germinating Pollen grains
GXPS-SUNFEMB-3	Male gametophyte
GXPS-SUNFEMB-4	Ovary LS
GXPS-SUNFEMB-5-9	A set of 5 slides
<b>GXPS-SUNEMB-SET</b>	<b>Sunflower Embryology Set of 9 Prepared Slides in a plastic box</b>

CAPSELLA EMBRYOLOGY	
GXPS-CAPSEMB-1	One celled stage
GXPS-CAPSEMB-2	Two celled stage LS
GXPS-CAPSEMB-3	Quadrant stage
GXPS-CAPSEMB-4	Octant stage
GXPS-CAPSEMB-5	Globular or Heart Shaped Embryo
GXPS-CAPSEMB-6	Differentiation of cotyledons
GXPS-CAPSEMB-7	Precotyledon
GXPS-CAPSEMB-8	Bending of cotyledons
GXPS-CAPSEMB-9	Precotyledon
GXPS-CAPSEMB-10	Bending of cotyledons
GXPS-CAPSEMB-11	Mature Embryo LS
<b>GXPS-CAPEMB-SET</b>	<b>Capsella Embryology Set of 11 Prepared Slides in a plastic box</b>

110 µm

## GX Wolf Microscopes Prepared Slides

GX M Part Number	Description
<b>HISTOLOGY</b>	
<b>General Histology - Series 1</b>	
GXPS-HIST-SER1-1	Pancreas
GXPS-HIST-SER1-2	Loose connective tissue, W.M.
GXPS-HIST-SER1-3	Hyaline cartilage, Sec.
GXPS-HIST-SER1-4	Elastic cartilage, Sec.
GXPS-HIST-SER1-5	Hard Bone , Grinding Sec.
GXPS-HIST-SER1-6	Hard Bone Grinding Decalcium Human Teeth
GXPS-HIST-SER1-7	Dense Bone, Sec.
GXPS-HIST-SER1-8	Smooth Muscle Teased Preparation
GXPS-HIST-SER1-9	Skeletal Muscle, L.S.C.S.
GXPS-HIST-SER1-10	Tendon, Rabbit, Sec.
GXPS-HIST-SER1-11	Squamous Epithelium Smear Form Human Mouth
GXPS-HIST-SER1-12	Simple Flat Epithelium, W.M.
GXPS-HIST-SER1-13	Stratified Flat Epithelium , Sec.
GXPS-HIST-SER1-14	Ciliated Epithelium, Sec.
GXPS-HIST-SER1-15	Human Skin Sec. Through Hair Follicle
GXPS-HIST-SER1-16	Human Skin Sec. Through Sweat Gland
GXPS-HIST-SER1-17	Lung Sec.
GXPS-HIST-SER1-18	Lung With Blood Vessels Injected, Sec.
GXPS-HIST-SER1-19	Trachea, C.S.
GXPS-HIST-SER1-20	Artery & Vein, C.S.
GXPS-HIST-SER1-21	Human blood , smear
GXPS-HIST-SER1-22	Lymph Node, Sec
GXPS-HIST-SER1-23	Thyroid gland
GXPS-HIST-SER1-24	Wall of Stomach , Sec.
GXPS-HIST-SER1-25	Small Intestine, C.S.
GXPS-HIST-SER1-26	Liver , Sec.
GXPS-HIST-SER1-27	Gall bladder, Sec.
GXPS-HIST-SER1-28	Testis, Sec.
GXPS-HIST-SER1-29	Ovary , Sec.
GXPS-HIST-SER1-30	Kidney, L.S.
GXPS-HIST-SER1-31	Human Chromosome
<b>GXPS-GENHIST-SER1-SET</b>	<b>Boxed Prepared Slides, 30 slides, General Histology Series 1, selected from the above list, in a wooden box</b>

A microscopic image of tissue, likely a histological section, showing various cellular structures. A scale bar in the top right corner indicates a length of 110 µm. The background is a light, textured surface, possibly a slide or a piece of paper.

110 µm

## **GX Wolf Microscopes Prepared Slides**

GXM Part Number	Description
<b>HISTOLOGY</b>	
<b>HUMAN ANATOMY</b>	
GXPS-HUMAN-H0001	HUMAN BLOOD; NORMAL, SMEAR.
GXPS-HUMAN-H0002	SQUAMOUS EPITHELIUM; SMEAR FROM MOUTH. SHOWS THE FLAT, IRREGULAR LINING CELLS.
GXPS-HUMAN-H0003	SMOOTH MUSCLE; MACERATED TO SHOW INDIVIDUAL CELLS.
GXPS-HUMAN-H0004	BONE: GROUND, HUMAN, CS. HAVERSIAN CANALS, LAMELLAE, LACUNAE, & CANALICULI CLEARLY SHOWN.
GXPS-HUMAN-H0006	SEX CHROMATIN BODIES (DRUMSTICKS); FEMALE HUMAN BLOOD SMEAR.
GXPS-HUMAN-H0007	CEREBRAL CORTEX; SECTION.
<b>GXPS-HUMANAT-SET</b>	<b>Human Anatomy Set of 6 Prepared Slides in a plastic box</b>

110 µm

## GX Wolf Microscopes Prepared Slides

GXM Part Number	Description
<b>HISTOLOGY</b>	
<b>MAMMAL HISTOLOGY</b>	
GXPS-MAM-HIST-1	Artery TS
GXPS-MAM-HIST-2	Aorta TS
GXPS-MAM-HIST-3	Blood Smear
GXPS-MAM-HIST-4	Brain Cerebrum TS
GXPS-MAM-HIST-5	Brain Cerebellum TS
GXPS-MAM-HIST-6	Bone decalcified TS
GXPS-MAM-HIST-7	Bone Calcified TS
GXPS-MAM-HIST-8	Eye VS
GXPS-MAM-HIST-9	Fallopian tube TS
GXPS-MAM-HIST-10	Heart TS or LS
GXPS-MAM-HIST-11	Ileum TS
GXPS-MAM-HIST-12	Jejunum TS
GXPS-MAM-HIST-13	Kidney TS or LS
GXPS-MAM-HIST-14	Pancreas TS
GXPS-MAM-HIST-15	Liver TS
GXPS-MAM-HIST-16	Large intestine (Rectum) TS
GXPS-MAM-HIST-17	Larynx TS
GXPS-MAM-HIST-18	Lung TS
GXPS-MAM-HIST-19	Lymph gland TS
GXPS-MAM-HIST-20	Lung LS or TS
GXPS-MAM-HIST-21	Lymph gland TS
GXPS-MAM-HIST-22	Oesophagus TS
GXPS-MAM-HIST-23	Umbilical cord TS
GXPS-MAM-HIST-24	Ovary TS
GXPS-MAM-HIST-25	Nerve TS
GXPS-MAM-HIST-26	Spinal Cord TS
GXPS-MAM-HIST-27	Spleen TS
GXPS-MAM-HIST-28	Sperm smear
GXPS-MAM-HIST-29	Penis TS
GXPS-MAM-HIST-30	Trachea TS
GXPS-MAM-HIST-31	Testis TS
GXPS-MAM-HIST-32	Stomach TS
GXPS-MAM-HIST-33	Rectum TS
GXPS-MAM-HIST-34	Thymus gland TS
GXPS-MAM-HIST-35	Tongue TS
GXPS-MAM-HIST-36	Vein TS
GXPS-MAM-HIST-38	Urinary Bladder TS
GXPS-MAM-HIST-39	Urethra TS
<b>GXPS-MAMANAT-SET</b>	<b>Mammalian Histology Set of 38 Prepared Slides in a plastic box</b>

110 µm

**GX Wolf Microscopes  
Prepared Slides**

GXM Part Number	Description
<b>HISTOLOGY</b>	
<b>HUMAN PATHOLOGY</b>	
GXPS-HUM-PATH-1	Plasmodium P. Viax
GXPS-HUM-PATH-2	Plasmodium Falciparum
GXPS-HUM-PATH-3	Plasmodium Malaria
GXPS-HUM-PATH-4	Plasmodium Ovale
GXPS-HUM-PATH-5	Balantidium Coil
GXPS-HUM-PATH-6	Plasmodium Trohazite Stage
GXPS-HUM-PATH-7	Plasmodium Signet Protozoa
GXPS-HUM-PATH-8	Plasmodium Sporozoite Stage
GXPS-HUM-PATH-9	Malaria Paresite in H. Blood Protozoa
GXPS-HUM-PATH-10	Trypanosoma Bruci (Gambiense)
GXPS-HUM-PATH-11	Trypanosoma Bruci (Rhodesinse)
GXPS-HUM-PATH-12	Trypanosoma Cruzi
GXPS-HUM-PATH-13	Tania Solium
GXPS-HUM-PATH-14	Tania Saginata
GXPS-HUM-PATH-15	Fasciola Hepatica W.M
GXPS-HUM-PATH-16	Trichuris
GXPS-HUM-PATH-17	Ancylostome Dermatitis
GXPS-HUM-PATH-18	Ancylostome Pneumonia
GXPS-HUM-PATH-19	Ascaris Male
GXPS-HUM-PATH-20	Ascaris Female
GXPS-HUM-PATH-21	Wuchereria Bancroft
GXPS-HUM-PATH-22	Lesmania
GXPS-HUM-PATH-23	Entamoeba - Histolytica
GXPS-HUM-PATH-24	Amoeba - Histolytica
GXPS-HUM-PATH-25	Amoeba Binary
GXPS-HUM-PATH-26	Basophil
<b>GXPS-HUMPATH-SET</b>	<b>Human Pathology Set of 26 Prepared Slides in a plastic box</b>

110 µm

## GX Wolf Microscopes Prepared Slides

GXM Part Number	Description
<b>HISTOLOGY</b>	
<b>HUMAN HISTOLOGY</b>	
GXPS-HUM-HIST-1	Human Oesophagus TS
GXPS-HUM-HIST-2	Human Skin TS
GXPS-HUM-HIST-3	Human Stomach TS
GXPS-HUM-HIST-4	Human Intestine TS
GXPS-HUM-HIST-5	Human Testis TS
GXPS-HUM-HIST-6	Human Ovary TS
GXPS-HUM-HIST-7	Human Uterus TS
GXPS-HUM-HIST-8	Human Vagina TS
GXPS-HUM-HIST-9	Human Blood Smear
GXPS-HUM-HIST-10	Human Blood RBC
GXPS-HUM-HIST-11	Human Blood WBC
GXPS-HUM-HIST-12	Human Spermatozoa Smear
GXPS-HUM-HIST-13	Human Spinal Cord TS
GXPS-HUM-HIST-14	Human Liver TS
GXPS-HUM-HIST-15	Human Kidney TS
GXPS-HUM-HIST-16	Human Brain TS
GXPS-HUM-HIST-17	Human Artery TS
GXPS-HUM-HIST-18	Human Vein TS
GXPS-HUM-HIST-19	Human Compact Bone TS
GXPS-HUM-HIST-20	Human Lung TS
GXPS-HUM-HIST-21	Human Heart TS
GXPS-HUM-HIST-22	Human Trachea TS
GXPS-HUM-HIST-23	Human Nerve TS
GXPS-HUM-HIST-24	Human Nerve TS
GXPS-HUM-HIST-25	Human Spleen TS
GXPS-HUM-HIST-26	Human Thyroid Gland TS
GXPS-HUM-HIST-27	Human Thymus Gland TS
GXPS-HUM-HIST-28	Human Tongue TS
GXPS-HUM-HIST-29	Human Mammary Glands TS
GXPS-HUM-HIST-30	Human Penis TS
<b>GXPS-HUMHIST-SET</b>	<b>Human Histology Set of 30 Prepared Slides in a plastic box</b>



110 µm

## GX Wolf Microscopes Prepared Slides

GXM Part Number	Description
<b>HISTOLOGY</b>	
<b>AVES HISTOLOGY</b>	
GXPS-AVES-HIST-1	Artery TS
GXPS-AVES-HIST-2	Bone TS
GXPS-AVES-HIST-3	Blood Smear
GXPS-AVES-HIST-4	Nerve TS
GXPS-AVES-HIST-5	Pancreas TS
GXPS-AVES-HIST-6	Ovary TS
GXPS-AVES-HIST-7	Rectum TS
GXPS-AVES-HIST-8	Testis TS
GXPS-AVES-HIST-9	Vein TS
<b>GXPS-AVESHIS-SET</b>	<b>Aves Histology Set of 9 Prepared Slides in a plastic box</b>

110  $\mu\text{m}$

## GX Wolf Microscopes Prepared Slides

GXM Part Number	Description
-----------------	-------------

### CYTOLOGY

CYTOLOGY SLIDES	
GXPS-CYTO-1	Animal Cells
GXPS-CYTO-2	Mitochondria in section
GXPS-CYTO-3	DNA
GXPS-CYTO-4	RNA
GXPS-CYTO-5	Giant chromosomes
<b>GXPS-CYTO-SET</b>	<b>Cytology Set of 5 Prepared Slides in a plastic box</b>

MITOSIS CELL DIVISION	
GXPS-MITOSIS-1	Interphase
GXPS-MITOSIS-2	Prophase
GXPS-MITOSIS-3	Metaphase
GXPS-MITOSIS-4	Anaphase
GXPS-MITOSIS-5	Telephase
<b>GXPS-MITOSIS-SET</b>	<b>Mitosis Set (Plant - Cygnus) of 5 Prepared Slides in a plastic box</b>

MEIOSIS CELL DIVISION	
GXPS-MEIOSIS-1	Resting nucleus
GXPS-MEIOSIS-2	Anaphase I
GXPS-MEIOSIS-3	Anaphase II
GXPS-MEIOSIS-4	Leptotene stage
GXPS-MEIOSIS-5	Zygotene stage
GXPS-MEIOSIS-6	Telophase I
GXPS-MEIOSIS-7	Telephase II
GXPS-MEIOSIS-8	Diplojene stage
GXPS-MEIOSIS-9	Pachytene stage
GXPS-MEIOSIS-10	Diakinesis stage
GXPS-MEIOSIS-11	Metaphase I
GXPS-MEIOSIS-12	Metaphase II
GXPS-MEIOSIS-13-24	Meiosis set of 12 slides
<b>GXPS-MEIOSIS-SET</b>	<b>Meiosis Set of 24 Prepared Slides in a plastic box</b>

110 µm

## GX Wolf Microscopes Prepared Slides

GXM Part Number	Description
<b>BACTERIOLOGY</b>	

Bacteria Series 1	
GXPS-BACT-D0001	BACTERIA, 3 TYPES; WM, SEPARATE SMEARS, ROUTINE STAIN.
GXPS-BACT-D0002	BACTERIA, 3 FORMS MIXED; COCCI, BACILLI, SPIRILLAE; GRAM STAIN.
GXPS-BACT-D0003	COCCUS; GRAM-NEGATIVE.
GXPS-BACT-D0004	BACILLUS; GRAM-NEGATIVE.
GXPS-BACT-D0005	FLAGELLAE; POLAR FLAGELLAE, SPIRILLUM VOLUTANS.
GXPS-BACT-D0008	MOUTH (ORAL) SMEAR; MIXED BACTERIA FROM NORMAL HEALTHY MOUTH, GRAM STAIN.
GXPS-BACT-D0013	AZOTOBACTER CHROOCOCCUM (LARGE NITROGEN-FIXING SOIL BACILLUS); SMEAR FROM CULTURE.
<b>GXPS-BACT-SER1-SET</b>	<b>Bacteriology Series 1 Set of 7 Prepared Slides in a plastic box</b>

Bacteria Series 2	
GXPS-BACT-SER2-1	Bacteria typical
GXPS-BACT-SER2-2	Coccus form
GXPS-BACT-SER2-3	Bacillus form
GXPS-BACT-SER2-4	Spirillum form
GXPS-BACT-SER2-5	Strepto coccus(chain)
GXPS-BACT-SER2-6	Vibro comma
GXPS-BACT-SER2-7	Gram's positive coccus
GXPS-BACT-SER2-8	Gram's negative bacillus
GXPS-BACT-SER2-9	Staphylococcus aureus
GXPS-BACT-SER2-10	Neisseria gonorrhoeae
GXPS-BACT-SER2-11	Bacillus subtilis
GXPS-BACT-SER2-12	Vibro cholera
<b>GXPS-BACT-SER2-SET</b>	<b>Bacteriology Series 2 Set of 12 Prepared Slides in a plastic box</b>

110  $\mu\text{m}$ 

## GX Wolf Microscopes Prepared Slides

GXM Part Number	Description
<b>ZOOLOGY</b>	
<b>General ZOOLOGY - Series 1</b>	
GXPS-ZOOL-SER1-1	Paramecium , W.M.
GXPS-ZOOL-SER1-2	Paramecium Conjugation, W.M.
GXPS-ZOOL-SER1-3	Paramecium in Fission, W.M.
GXPS-ZOOL-SER1-4	Euglena, W.M.
GXPS-ZOOL-SER1-5	Hydra, C.S.
GXPS-ZOOL-SER1-6	Hydra, Spermary, C.S.
GXPS-ZOOL-SER1-7	Hydra, Ovary , C.S.
GXPS-ZOOL-SER1-8	Hydra With Bud, W.M.
GXPS-ZOOL-SER1-9	Schistosoma Male, W.M.
GXPS-ZOOL-SER1-10	Schistosoma Female, W.M.
GXPS-ZOOL-SER1-11	Schistosoma Egg, W.M.
GXPS-ZOOL-SER1-12	Schistosoma Miracidia , W.M.
GXPS-ZOOL-SER1-13	Schistosoma Cercaroeae, W.M.
GXPS-ZOOL-SER1-14	Schistosoma Adults in Copula, W.M.
GXPS-ZOOL-SER1-15	Bladder Worm, W.M.
GXPS-ZOOL-SER1-16	Tapeworm, Mature Proglottid, W.M.
GXPS-ZOOL-SER1-17	Ascaris Female and Male , C.S.
GXPS-ZOOL-SER1-18	Mitosis, Horse Ascaris Eggs, Sec.
GXPS-ZOOL-SER1-19	Earthworm, C.S.
GXPS-ZOOL-SER1-20	Honey Bee Mouth Parts, W.M.
GXPS-ZOOL-SER1-21	Mosquito Mouth Parts, W.M.
GXPS-ZOOL-SER1-22	Culex , Common House Mosquito, Larva, W.M.
GXPS-ZOOL-SER1-23	House Fly Mouth Parts , W.M.
GXPS-ZOOL-SER1-24	Butterfly Mouth Parts, W.M.
GXPS-ZOOL-SER1-25	Honey Bee Hind Leg, W.M.
GXPS-ZOOL-SER1-26	Pediculus, Capitis, W.M.
GXPS-ZOOL-SER1-27	Clam Gill, C.S.
GXPS-ZOOL-SER1-28	Frog Egg, Sec.
GXPS-ZOOL-SER1-29	Frog Liver, Sec.
GXPS-ZOOL-SER1-30	Blood Pigeon, Smear.
<b>GXPS-GENZOOL-SER1-SET</b>	<b>General Zoology Series 1 Set of 30 Prepared Slides in a wooden box</b>

110  $\mu\text{m}$ 

## GX Wolf Microscopes Prepared Slides

GXM Part Number	Description
<b>ZOOLOGY</b>	
<b>General ZOOLOGY - Series 2</b>	
GXPS-ZOOL-B0001	AMOEBIA PROTEUS; WM.
GXPS-ZOOL-B0002	PARAMECIUM CAUDATUM; WM.
GXPS-ZOOL-B0003	ZOOPLANKTON; WM, MIXED SPECIES.
GXPS-ZOOL-B0004	SPONGE, SPICULES; WM CONTAINING SEVERAL TYPES OF CALCAREOUS & SILICEOUS SPICULES.
GXPS-ZOOL-B0005	FRUIT FLY (DROSOPHILA); WM.
GXPS-ZOOL-B0006	FROG BLOOD; SMEAR.
GXPS-ZOOL-B0007	SPONGE; CS & LS.
GXPS-ZOOL-B0008	HYDRA; WM.
GXPS-ZOOL-B0009	PLANARIA; WM, INJECTED.
GXPS-ZOOL-B0010	EARTHWORM; CS.
GXPS-ZOOL-B0011	INSECT; WINGS (4 TYPES), WM.
GXPS-ZOOL-B0012	INSECT CORNEA; WM. (TABANUS)
GXPS-ZOOL-B0013	DROSOPHILA; FEMALE, WM.
GXPS-ZOOL-B0014	AMPHIOXUS; WM.
GXPS-ZOOL-B0015	EMBRYO CELLS; ANIMAL; WHITEFISH BLASTODISC SHOWING MITOSIS, SECTION.
GXPS-ZOOL-B0016	FROG INTESTINE; CS.
GXPS-ZOOL-B0017	EUGLENA; WM.
GXPS-ZOOL-B0018	PLANARIA; CS, THREE REGIONS.
GXPS-ZOOL-B0019	EARTHWORM (LUMBRICUS TERRESTRIS); PARASAGITTAL SECTION THROUGH THE ANTERIOR END, SHOWING CROP, GIZZARD, & SEMINAL VESICLES, PLUS OTHER STRUCTURES OF THE REGION.
GXPS-ZOOL-B0021	INSECT; LEGS (4 TYPES), WM. WALKING, DIGGING, SWIMMING, & HOPPING.
GXPS-ZOOL-B0022	INSECT; SPIRACLE, WM.
GXPS-ZOOL-B0023	FROG; LIVER, CS.
GXPS-ZOOL-B0024	FROG TESTIS; SECTION.
GXPS-ZOOL-B0025	BIRD; FEATHERS, 3 TYPES, WM.
GXPS-ZOOL-B0026	OVARY; SELECTED TO SHOW MATURING FOLLICLE WITH OVUM & CUMULUS OOPHORUS, SECTION.
GXPS-ZOOL-B0027	SQUAMOUS EPITHELIUM; KIDNEY (BOWMAN'S CAPSULE), SECTION.
GXPS-ZOOL-B0028	CILIATED COLUMNAR EPITHELIUM; SECTION.
GXPS-ZOOL-B0029	TRANSITIONAL EPITHELIUM; URETER OR BLADDER, SECTION.

110 µm

GXPS-ZOOL-B0030	CARTILAGE; HYALINE, SECTION.
GXPS-ZOOL-B0031	DEVELOPING CARTILAGE BONE; SHOWS OSTEOBLASTS, OSTEOCLASTS, BONY SPICULES, PRIMARY MARROW & RESORBING CARTILAGE, LS.
GXPS-ZOOL-B0032	STRIATED MUSCLE; THIN SECTIONS SPECIFICALLY STAINED TO SHOW THE DETAILS OF THE STRIATIONS, LS.
GXPS-ZOOL-B0033	MAMMALIAN MUSCLE, 3 TYPES; SECTIONS OF SMOOTH, STRIATED, & CARDIAC.
GXPS-ZOOL-B0034	SPINAL CORD; CS.
GXPS-ZOOL-B0035	ARTERY, VEIN & NERVE; SECTION.
GXPS-ZOOL-B0036	SPLEEN; SECTION.
GXPS-ZOOL-B0037	SKIN; SECTION WITH HAIR FOLLICLES CUT LONGITUDINALLY.
GXPS-ZOOL-B0038	SALIVARY GLANDS; LINGUAL, SECTION. SHOWS BOTH SEROUS & MUCOUS GLANDS.
GXPS-ZOOL-B0039	STOMACH; FUNDIC REGION, SECTION.
GXPS-ZOOL-B0040	DUODENUM, JEJUNUM, & ILEUM; CS.
GXPS-ZOOL-B0041	PANCREAS; SECTION.
GXPS-ZOOL-B0042	LIVER; NORMAL MAMMALIAN, SECTION.
GXPS-ZOOL-B0043	TESTIS; STAINED WITH IRON HEMATOXYLIN TO ILLUSTRATE SPERMATOGENESIS & SPERMIOGENESIS, SECTION.
GXPS-ZOOL-B0044	PARATHYROID & THYROID; SECTION.
GXPS-ZOOL-B0045	SUPRARENAL (ADRENAL); SECTION.
GXPS-ZOOL-B0046	CHAETOPHORA; BRANCHING FILAMENTS ENVELOPED IN AN EXCEEDINGLY TOUGH GELATINOUS MATRIX, WM.
GXPS-ZOOL-B0047	DROSOPHILA; CHROMOSOMES. LARVAL SALIVARY GLAND SMEAR WHICH PORTRAYS GIANT CHROMOSOMES WITH THEIR CHARACTERISTIC BANDING.
GXPS-ZOOL-B0048	GRASSHOPPER TESTIS; SECTION.
GXPS-ZOOL-B0049	SPERM; BULL, SMEAR.
GXPS-ZOOL-B0050	STRATIFIED CILIATED COLUMNAR EPITHELIUM; SECTION OF FROG ESOPHAGUS OR ORAL MUCOSA.
GXPS-ZOOL-B0052	GOLGI APPARATUS (DICTYOSOMES); SPECIAL SILVER PREPARATION OF MAMMALIAN OR AMPHIBIAN PANCREAS, SECTION.
GXPS-ZOOL-B0053	MOTOR NERVE CELLS; NISSL STAIN, SMEAR.
GXPS-ZOOL-B0054	AMPHIUMA; (LARGE DISTINCT CELLS) INTESTINE, SMALL, CS.
GXPS-ZOOL-B0056	HYDRA; NEAR-MEDIAN LS THROUGH HYPOSTOME & FOOT.

110 µm

GXPS-ZOOL-B0057	EMBRYO CELLS; ANIMAL; WHITEFISH BLASTODISC SHOWING MITOSIS, SECTION.
GXPS-ZOOL-B0058	STRATIFIED SQUAMOUS EPITHELIUM; FROG SKIN, SECTION.
GXPS-ZOOL-B0059	CILIATED COLUMNAR EPITHELIUM; SECTION.
GXPS-ZOOL-B0060	LIVER; NORMAL MAMMALIAN, SECTION.
GXPS-ZOOL-B0061	TESTIS; STAINED WITH IRON HEMATOXYLIN TO ILLUSTRATE SPERMATOGENESIS & SPERMIOGENESIS, SECTION.
GXPS-ZOOL-B0062	THYROID; SECTION.
GXPS-ZOOL-B0063	PARAMECIUM; FISSION, WM.
GXPS-ZOOL-B0064	PARAMECIUM; CONJUGATIN, WM.
GXPS-ZOOL-B0067	MOSQUITO (CULEX); HEADS, WM FROM MALE & FEMALE.
GXPS-ZOOL-B0068	FLEA; WM.
GXPS-ZOOL-B0069	AMPHIUMA; (LARGE DISTINCT CELLS) EPITHELIUM, 3 TYPES, SECTION.
GXPS-ZOOL-B0070	MOTOR NERVE CELLS; FROM VENTRAL HORN OF OX SPINAL CORD, SMEAR.
GXPS-ZOOL-B0071	HYDRA; CS & LS.
GXPS-ZOOL-B0072	OBELIA; PORTION OF COLONY SHOWING VEGETATIVE & REPRODUCTIVE POLYPS, WM.
GXPS-ZOOL-B0073	NEANTHES (NEREIS); PARAPODIUM, WM.
GXPS-ZOOL-B0074	SNAIL; RADULA, WM.
GXPS-ZOOL-B0075	INSECT; LEGS (4 TYPES), WM. WALKING, DIGGING, SWIMMING, & HOPPING.
GXPS-ZOOL-B0076	HONEY BEE; MOUTH PARTS, WM.
GXPS-ZOOL-B0077	INSECT; ANTENNAE (7 TYPES), WM. CLAVATE, PLUMOSE, LAMELLATE, SERRATE OR PECTINATE, MONILIFORM, GENICULATE, & ARISTATE.
GXPS-ZOOL-B0078	INSECT; RADIAL SECTION OF COMPOUND EYE.
GXPS-ZOOL-B0079	GRASSHOPPER; HEAD, WM SHOWING MOUTH PARTS.
GXPS-ZOOL-B0080	TERMITE; WORKER, WM.
GXPS-ZOOL-B0081	TERMITE; SOLDIER, WM.
GXPS-ZOOL-B0084	BUTTERFLY; PROBOSCIS, WM.
GXPS-ZOOL-B0085	DROSOPHILA; MALE & FEMALE, WM.
GXPS-ZOOL-B0086	HOUSEFLY; HEAD, LEG, & WING, WM.
GXPS-ZOOL-B0087	MOSQUITO (CULEX); LARVA, WM.
GXPS-ZOOL-B0088	MOSQUITO (CULEX); PUPA, WM.
GXPS-ZOOL-B0089	HONEY BEE; LEGS, WM OF 1ST, 2ND, & 3RD LEGS.
GXPS-ZOOL-B0090	HONEY BEE; STING & POISON SAC, WM.
GXPS-ZOOL-B0091	WEEVIL; WM.
<b>GXPS-GENZOOL-SER2-SET</b>	<b>General Zoology Series 2 Set of 84 Prepared Slides in a plastic box</b>

110 µm

## GX Wolf Microscopes Prepared Slides

GXM Part Number	Description
<b>ZOOLOGY</b>	

<b>PROTOZOA</b>	
GXPS-PROTZ-1	Amoeba Proteus W.M.
GXPS-PROTZ-2	Balantidium Coil W.M.
GXPS-PROTZ-3	Entamoeba Histolytica W.M.
GXPS-PROTZ-4	Entamoeba Coil W.M.
GXPS-PROTZ-5	Entamoeba Hisolytica Cyst
GXPS-PROTZ-6	Euglena W.M.
GXPS-PROTZ-7	Malaria Parasite (in H.Blood)
GXPS-PROTZ-8	Noctilcua W.M.
GXPS-PROTZ-9	Paramecium W.M.
GXPS-PROTZ-10	Paramecium Conjunction
GXPS-PROTZ-11	Paramecium in Fission
GXPS-PROTZ-12	Volvox
GXPS-PROTZ-13	Vorticella
<b>GXPS-PROTOZ-SET</b>	<b>Protozoa Set of 13 Prepared Slides in a plastic box</b>

<b>PORIFERA</b>	
GXPS-PORIF-1	Grantia T.S. or L.S.
GXPS-PORIF-2	Sponge Gemmule
GXPS-PORIF-3	Grantia Spicules
GXPS-PORIF-4	Leucosolenia W.M.
GXPS-PORIF-5	Spongeilla W.M.
GXPS-PORIF-6	Sycon T.S. or L.S.
<b>GXPS-PORIF-SET</b>	<b>Porifera Set of 6 Prepared Slides in a plastic box</b>

<b>COELENTRATA</b>	
GXPS-COELENT-1	Aurellia Tentaclocyst W.M.
GXPS-COELENT-2	Aurellia W.M.
GXPS-COELENT-3	Hydra W.M.
GXPS-COELENT-4	Hydra with Bud W.M.
GXPS-COELENT-5	Hydra T.S. Body
GXPS-COELENT-6	Hydra L.S. Body
GXPS-COELENT-7	Hydra T.S. Testis
GXPS-COELENT-8	Hydra Ovary T.S.
GXPS-COELENT-9	Obelia Colony W.M.
GXPS-COELENT-10	Obelia Medusae W.M.
GXPS-COELENT-12	Sea Anemone TS
GXPS-COELENT-13	Sea Anemone LS
<b>GXPS-COEL-SET</b>	<b>COELENTRATA Set of 12 Prepared Slides in a plastic box</b>

110 µm

## GX Wolf Microscopes Prepared Slides

GXM Part Number	Description
-----------------	-------------

### ZOOLOGY

<b>PLATHYELMINTHES</b>	
GXPS-PLATHY-1	Liver Fluke W.M.
GXPS-PLATHY-2	Planaria W.M.
GXPS-PLATHY-3	Planaria T.S.
GXPS-PLATHY-4	Tape worm scolex W.M.
GXPS-PLATHY-5	Tape worm bladder worm W.M.
GXPS-PLATHY-6	Tape worm proglottid immature
GXPS-PLATHY-7	Tape worm proglottid (Gravid)
GXPS-PLATHY-8	Tape worm proglottid mature
GXPS-PLATHY-9	Tape worm eggs W.M.
<b>GXPS-PLATHY-SET</b>	<b>PLATHYELMINTHES Set of 9 Prepared Slides in a plastic box</b>

<b>NEMATHELMINTHES</b>	
GXPS- NEMATH-1	Ascaris male TS
GXPS- NEMATH-2	Ascaris female TS
GXPS- NEMATH-3	Ancylostoma
GXPS- NEMATH-4	Hook worm S.M.
GXPS- NEMATH-5	Pin worm W.M.
<b>GXPS-NEMATH-SET</b>	<b>NEMATHELMINTHES Set of 5 Prepared Slides in a plastic box</b>

<b>ANNELIDA</b>	
GXPS-ANNELID-1	Earth worm ant reg LS
GXPS-ANNELID-2	Earth worm buccal reg TS
GXPS-ANNELID-3	Earth worm pharynx TS
GXPS-ANNELID-4	Earth worm gizzard TS
GXPS-ANNELID-5	Earth worm clitellum TS
GXPS-ANNELID-6	Earth worm heart reg TS
GXPS-ANNELID-7	Earth worm intestine reg
GXPS-ANNELID-8	Earth worm ovary W.M.
GXPS-ANNELID-9	Earth worm brain ring W.M.
GXPS-ANNELID-10	Earth worm septal nephridia W.M.
GXPS-ANNELID-11	Earth worm setae W.M.
GXPS-ANNELID-12	Heteronereis W.M. (small)
GXPS-ANNELID-13	Leech TS
GXPS-ANNELID-14	Nereis TS
<b>GXPS-ANNEL-SET</b>	<b>ANNELIDA Set of 14 Prepared Slides in a plastic box</b>



110 µm

## GX Wolf Microscopes Prepared Slides

GXM Part Number	Description
<b>ZOOLOGY</b>	
<b>CRUSTACEA</b>	
GXPS-CRUST-1	Cyclops W.M.
GXPS-CRUST-2	Centipede W.M. stinging leg
GXPS-CRUST-3	Daphnia W.M.
GXPS-CRUST-4	Mite W.M.
GXPS-CRUST-5	Rotifer
GXPS-CRUST-6	Spider W.M.
<b>GXPS-CRUST-SET</b>	<b>CRUSTACEA Set of 6 Prepared Slides in a plastic box</b>

110 µm

## GX Wolf Microscopes Prepared Slides

GXM Part Number	Description
<b>ZOOLOGY</b>	

<b>ARTHROPODA (INSECTA)</b>	
GXPS-ARTHROP-1	Aphid W.M.
GXPS-ARTHROP-2	Anopheles male W.M.
GXPS-ARTHROP-3	Anopheles female W.M.
GXPS-ARTHROP-4	Anopheles mouth parts male W.M.
GXPS-ARTHROP-5	Anopheles mouth parts female W.M.
GXPS-ARTHROP-6	Anopheles eggs W.M.
GXPS-ARTHROP-7	Anopheles larva W.M.
GXPS-ARTHROP-8	Anopheles pupa W.M.
GXPS-ARTHROP-9	Bed Bug Mouth parts
GXPS-ARTHROP-10	Bed Bug W.M.
GXPS-ARTHROP-11	Cockroach mouth parts
GXPS-ARTHROP-12	Cockroach Salivary glands
GXPS-ARTHROP-13	Cockroach malphigian tubules
GXPS-ARTHROP-14	Cockroach hepatic caeca
GXPS-ARTHROP-15	Cockroach ovary TS
GXPS-ARTHROP-16	Cockroach testis TS
GXPS-ARTHROP-17	Cockroach leg W.M.
GXPS-ARTHROP-18	Cockroach spiracle thoracic
GXPS-ARTHROP-19	Cockroach gizzard
GXPS-ARTHROP-20	Cockroach trachea W.M.
GXPS-ARTHROP-21	Cockroach muscles striated
GXPS-ARTHROP-22	Cockroach wing W.M.
GXPS-ARTHROP-23	Culex male W.M.
GXPS-ARTHROP-24	Culex female W.M.
GXPS-ARTHROP-25	Culex mouth part male W.M.
GXPS-ARTHROP-26	Culex mouth part female W.M.
GXPS-ARTHROP-27	Grass hopper mouth parts
GXPS-ARTHROP-28	Grass hopper Testis
GXPS-ARTHROP-29	Housefly male W.M.
GXPS-ARTHROP-30	Housefly female W.M.
GXPS-ARTHROP-31	Housefly mouth parts W.M.
GXPS-ARTHROP-32	Head louse W.M.
GXPS-ARTHROP-33	Honey bee mouth parts
GXPS-ARTHROP-34	Rat flea W.M.
GXPS-ARTHROP-35	Termite worker W.M.
<b>GXPS-ARTHROP-SET</b>	<b>ARTHROPODA (INSECTA) Set of 35 Prepared Slides in a plastic box</b>

110 µm

**GX Wolf Microscopes  
Prepared Slides**

GXM Part Number	Description
<b>ZOOLOGY</b>	
<b>ECHINODERMATA</b>	
GXPS-ECHIN-1	Starfish arm TS
<b>LOWER CHORDATA</b>	
GXPS-LCHORD-1	Amphioxus TS tail
GXPS-LCHORD-2	Amphioxus oral hood TS
GXPS-LCHORD-3	Amphioxus entire W.M.
GXPS-LCHORD-4	Amphioxus TS pharynx
GXPS-LCHORD-5	Amphioxus TS intestine
GXPS-LCHORD-6	Balanoglossus TS trunk reg.
GXPS-LCHORD-7	Balanoglossus TS Gonads
GXPS-LCHORD-8	Balanoglossus ant reg. LS.
GXPS-LCHORD-9	Balanoglossus TS proboscis reg.
GXPS-LCHORD-10	Balanoglossus TS branchial reg.
GXPS-LCHORD-11	Balanoglossus collar reg. TS.
GXPS-LCHORD-12	Cioha W.M.
GXPS-LCHORD-13	Ascidian Larva W.M.
<b>GXPS-LOWCHORD-SET</b>	<b>LOWER CHORDATA Set of 13 Prepared Slides in a plastic box</b>

110 µm

**GX Wolf Microscopes  
Prepared Slides**

GXM Part Number	Description
<b>ZOOLOGY</b>	
<b>FROG HISTOLOGY</b>	
GXPS-FROG-HIST-1	Artery TS
GXPS-FROG-HIST-2	Bone calcified TS
GXPS-FROG-HIST-3	Bone Decalcified TS
GXPS-FROG-HIST-4	Brain cerebrum TS
GXPS-FROG-HIST-5	Brain LS
GXPS-FROG-HIST-6	Brain cerebellum
GXPS-FROG-HIST-7	Blood smear
GXPS-FROG-HIST-8	Cartilage TS
GXPS-FROG-HIST-9	Eye VS
GXPS-FROG-HIST-10	Gall bladder TS
GXPS-FROG-HIST-11	Heart TS or LS
GXPS-FROG-HIST-12	Intestine TS
GXPS-FROG-HIST-13	Liver TS
GXPS-FROG-HIST-14	Lung TS or LS
GXPS-FROG-HIST-15	Kidney TS or LS
GXPS-FROG-HIST-16	Ovary TS
GXPS-FROG-HIST-17	Nerve TS
GXPS-FROG-HIST-18	Oesophagus TS
GXPS-FROG-HIST-19	Pancreas TS
GXPS-FROG-HIST-20	Rectum TS
GXPS-FROG-HIST-21	Sperm Smear
GXPS-FROG-HIST-22	Stomach TS
GXPS-FROG-HIST-23	Spleen TS
GXPS-FROG-HIST-24	Skin VS
GXPS-FROG-HIST-25	Testis TS
GXPS-FROG-HIST-26	Fat body TS
GXPS-FROG-HIST-27	Tongue TS
GXPS-FROG-HIST-28	Spinal Cord TS
GXPS-FROG-HIST-29	Vein TS
<b>GXPS-FROGHIST-SET</b>	<b>Frog Histology Set of 29 Prepared Slides in a plastic box</b>

110 µm

**GX Wolf Microscopes  
Prepared Slides**

GXM Part Number	Description
<b>ZOOLOGY</b>	
<b>FROG EMBRYOLOGY</b>	
GXPS-FROG-EMB-1	Egg VS/WM
GXPS-FROG-EMB-2	Egg-2 celled VS
GXPS-FROG-EMB-3	Egg-4 celled VS
GXPS-FROG-EMB-4	Early cleavage TS/W.M.
GXPS-FROG-EMB-5	Late cleavage TS/W.M.
GXPS-FROG-EMB-6	Blastula VS/W.M.
GXPS-FROG-EMB-7	Gastrula VS/W.M.
GXPS-FROG-EMB-8	Embyro W.M. 4 mm
GXPS-FROG-EMB-9	Embyro 7mm VS/W.M.
GXPS-FROG-EMB-10	Neural fold stage VS/W.M.
GXPS-FROG-EMB-11	External Gill stage W.M.
GXPS-FROG-EMB-12	Internal Gill stage W.M.
GXPS-FROG-EMB-13	Yolk plug stage TS
GXPS-FROG-EMB-14	Tadpole W.M.
GXPS-FROG-EMB-15	Tadpole buccal reg. TS
GXPS-FROG-EMB-16	Tadpole gill reg. TS
GXPS-FROG-EMB-17	Tadpole trunk reg. TS
GXPS-FROG-EMB-18	Tadpole head reg. TS
GXPS-FROG-EMB-19	Tadpole heart reg. TS
GXPS-FROG-EMB-20	Tadpole eye reg. TS
GXPS-FROG-EMB-21	Tadpole tail reg. TS
GXPS-FROG-EMB-22	Frog testis mature sperms TS
GXPS-FROG-EMB-23	Frog Ovary with mature eggs. TS
<b>GXPS-FROGEMB-SET</b>	<b>Frog Embryology Set of 23 Prepared Slides in a plastic box</b>

110  $\mu\text{m}$ 

## GX Wolf Microscopes Prepared Slides

GXM Part Number	Description
<b>ZOOLOGY</b>	
<b>CHICK EMBRYOLOGY</b>	
GXPS-CHICK-EMB-1	Ovary TS Showing Eggs.
GXPS-CHICK-EMB-2	Sperm Smear
GXPS-CHICK-EMB-3	Testis TS Spermatozoa
GXPS-CHICK-EMB-4	13 hrs. Permissive Streak W.M.
GXPS-CHICK-EMB-5	13 hrs. Premitive Streat TS
GXPS-CHICK-EMB-6	18 hrs. Blastoderm W.M.
GXPS-CHICK-EMB-7	18 hrs. Blastoderm TS
GXPS-CHICK-EMB-8	21 hrs. 1-3 Somities W.M.
GXPS-CHICK-EMB-9	21 hrs. Stage TS
GXPS-CHICK-EMB-10	24 hrs. 7 Somites W.M.
GXPS-CHICK-EMB-11	21 hrs. Stage TS
GXPS-CHICK-EMB-12	30 hrs. Stage W.M.
GXPS-CHICK-EMB-13	30 hrs. Stage W.M.
GXPS-CHICK-EMB-14	33 hrs. 8-13 Somites W.M.
GXPS-CHICK-EMB-15	33 hrs. TS
GXPS-CHICK-EMB-16	36 hrs. 14-17 Somites W.M.
GXPS-CHICK-EMB-17	36 hrs. Somites TS
GXPS-CHICK-EMB-18	36 hrs. Stage TS
GXPS-CHICK-EMB-19	38 hrs. Appx. 28 Somites W.M.
GXPS-CHICK-EMB-20	42 hrs. Appx. 30 Somites W.M.
GXPS-CHICK-EMB-21	48 hrs. Stage W.M.
GXPS-CHICK-EMB-22	48 hrs. Stage TS
GXPS-CHICK-EMB-23	58 hrs. Stage W.M.
GXPS-CHICK-EMB-24	58 hrs. Stage TS
GXPS-CHICK-EMB-25	66 hrs. Stage W.M.
GXPS-CHICK-EMB-26	66 hrs. Stage TS
GXPS-CHICK-EMB-27	72 hrs. Stage W.M.
GXPS-CHICK-EMB-28	72 hrs. Stage TS
GXPS-CHICK-EMB-29	84 hrs. Stage W.M.
GXPS-CHICK-EMB-30	84 hrs. Stage TS
GXPS-CHICK-EMB-31	96 hrs. Stage W.M.
GXPS-CHICK-EMB-32	96 hrs. Stage TS
GXPS-CHICK-EMB-33	120 hrs. Stage W.M.
GXPS-CHICK-EMB-34	120 hrs. Stage TS
<b>GXPS-CHICKEMB-SET</b>	<b>Chick Embryology Set of 34 Prepared Slides in a plastic box</b>



110 µm

**GX Wolf Microscopes  
Prepared Slides**

GXM Part Number	Description
<b>PARASITOLOGY</b>	
<b>PARASITOLOGY</b>	
GXPS-PARA-G0005	TAENIA SP.; MATURE & GRAVID PROGLOTTIDS, WM.
GXPS-PARA-G0009	TAENIA SP.; MATURE & GRAVID PROGLOTTIDS, WM.
GXPS-PARA-G0010	ASCARIS; CS, MALE & FEMALE.
<b>GXPS-PARASIT-SET</b>	<b>Parasitology Set of 3 Prepared Slides in a plastic box</b>

110  $\mu\text{m}$ 

## GX Wolf Microscopes Prepared Slides

GXM Part Number	Description
<b>MICROFOSSILS</b>	
<b>MICRO FOSSIL EQUISETALES : -</b>	
GXPS-MFOS-EQUIS-1	Calamites T.S Complete round Stem with over 25 vascular each showing distinct carinal canal .
GXPS-MFOS-EQUIS-2	Calamites T.S With branch in association
GXPS-MFOS-EQUIS-3	Stylocalamites T.S
GXPS-MFOS-EQUIS-4	Extremely Young Calamites :- With all cells of the pitch intact, carinal canals just making their first appearance and x2 represented only by about a dozen secondary tracheids .
GXPS-MFOS-EQUIS-5	Equisetites
GXPS-MFOS-EQUIS-6	Annualaria T.S
GXPS-MFOS-EQUIS-7	Astromylon - Pitch Fully Developed
GXPS-MFOS-EQUIS-8	Annualaria T.S
GXPS-MFOS-EQUIS-9	Calamities Root - Pitch Fully Developed
GXPS-MFOS-EQUIS-10	Calamostaachys Binneyana T.S
GXPS-MFOS-EQUIS-11	Calamostaachys Binneyana L.S
GXPS-MFOS-EQUIS-12	Astercalamities Leaves-Branching
GXPS-MFOS-EQUIS-13	Protocalamities T.S with CPX on the inner side protoxylem
GXPS-MFOS-EQUIS-14	Arthropitys T.S
GXPS-MFOS-EQUIS-15	Arthrodendron T.S
GXPS-MFOS-EQUIS-16	Calamodendron :- Showing characteristic medrays parenchyma in the middle flanked by thicker cells
GXPS-MFOS-EQUIS-17	Asterphyllites
GXPS-MFOS-EQUIS-18	Neo -Calamites
GXPS-MFOS-EQUIS-19	Calamites Sporangia
GXPS-MFOS-EQUIS-20	Calmopitys
GXPS-MFOS-EQUIS-21	Sphenophyllum Plurifoliatum T.S Stem
GXPS-MFOS-EQUIS-22	Sphenophyllum Plurifoliatum T.S Root .
GXPS-MFOS-EQUIS-23	Sphenophyllum Leaf T.S
GXPS-MFOS-EQUIS-24	Sphenophyllum Cone Part
GXPS-MFOS-EQUIS-25	Bowmanites Cone
GXPS-MFOS-EQUIS-27	Sphenophyllostachys
<b>GXPS-EQUI-SET</b>	<b>MicroFossils EQUISETALES Set of 26 Prepared Slides in a plastic box</b>



110 µm

## GX Wolf Microscopes Prepared Slides

GXM Part Number	Description
-----------------	-------------

### MICROFOSSILS

MICRO FOSSIL PSILOPHYTALES	
GXPS-MFOS-PSILO-1	Rhynia Stem T.S
GXPS-MFOS-PSILO-2	Rhynia Major T.S
GXPS-MFOS-PSILO-3	Rhynia Stem Gwynevauhani T.S
GXPS-MFOS-PSILO-4	Rhynia Stem L.S
GXPS-MFOS-PSILO-5	Rhynia Fungal Spores Paleosporites
GXPS-MFOS-PSILO-6	Rhynia Sporangium (rare)
GXPS-MFOS-PSILO-7	Rhynia T.S Rhizome
GXPS-MFOS-PSILO-8	Horneophyton Sporangium
GXPS-MFOS-PSILO-9	Horneophyton T.S
GXPS-MFOS-PSILO-10	Psilphyton T.S
GXPS-MFOS-PSILO-11	Psilophyton Sporangium
GXPS-MFOS-PSILO-12	Prototaxites Logani ( Arnold : 51)
GXPS-MFOS-PSILO-13	Nematothallus (Arnold : 52 )
<b>GXPS-PSILO-SET</b>	<b>MicroFossils PSILOPHYTALES Set of 13 Prepared Slides in a plastic box</b>

110  $\mu\text{m}$ 

## GX Wolf Microscopes Prepared Slides

GXM Part Number	Description
-----------------	-------------

### MICROFOSSILS

MICRO FOSSIL LYCOPODIALES : -	
GXPS-MFOS-LYCO-2	Lepidodendron : - Selaginodes T.S Complete round stem with mixed pitch in centre and leaves intact .
GXPS-MFOS-LYCO-3	Lepidodendron :- Vasculare T.S with Stelebranching (a rare stage )
GXPS-MFOS-LYCO-4	Lepidodendron : - Youngaxis T.S
GXPS-MFOS-LYCO-5	Lepidodendron :- Harcourtii T.S Young
GXPS-MFOS-LYCO-6	Lepidodendron :- Johnsonii T.S
GXPS-MFOS-LYCO-7	Lepidodendron :- Periderm
GXPS-MFOS-LYCO-8	Lepidodendron:- Root L.S
GXPS-MFOS-LYCO-9	Lepidodendrofolium T.S
GXPS-MFOS-LYCO-10	Lepidodendron Fuliginus T.S
GXPS-MFOS-LYCO-11	Lepidostrobus Profuse Sporangia
GXPS-MFOS-LYCO-12	Lepidostrobus Pulvinatus With Cone Axis
GXPS-MFOS-LYCO-13	Lepidostrobus Complete (Peel)
GXPS-MFOS-LYCO-14	Lepidostrobus Cone L.S
GXPS-MFOS-LYCO-15	Lepidostrobus Strobilus
GXPS-MFOS-LYCO-16	Lepidophyllum leaf bases-several in situ
GXPS-MFOS-LYCO-17	Lepidophyllum Fuliginosus T.S (Peel)
GXPS-MFOS-LYCO-18	Lepidophyllum Leaves with Area of ligule
GXPS-MFOS-LYCO-19	Lepidophyllum Leafs T.S – Midrib
GXPS-MFOS-LYCO-20	Anatomy
GXPS-MFOS-LYCO-21	Lepidophyllum Lingule
GXPS-MFOS-LYCO-22	Lepidophloios Fuliginosus
GXPS-MFOS-LYCO-23	Lepidophylloides Leaf T.S
GXPS-MFOS-LYCO-24	Lepidocarpon Wildianum L.S
GXPS-MFOS-LYCO-25	Lepidocarpon Young L.S
GXPS-MFOS-LYCO-27	Lepidocarpon SP (L. lomaxi)
GXPS-MFOS-LYCO-28	Mazocarpon
GXPS-MFOS-LYCO-29	Halonia-Leaf Bases
GXPS-MFOS-LYCO-30	Sigillaria Leaves T.S
GXPS-MFOS-LYCO-31	Sigillaria T.S Stem
GXPS-MFOS-LYCO-32	Bothrodendron Stem T.S
GXPS-MFOS-LYCO-33	Bothrodendron Sporangium
GXPS-MFOS-LYCO-34	Bothrodendron Spores
GXPS-MFOS-LYCO-35	Stigmaria Ficoides With Accessory
GXPS-MFOS-LYCO-36	Stigmaria Root T.S.
GXPS-MFOS-LYCO-37	Stigmaria Ficoides Bunch

110 µm

GXPS-MFOS-LYCO-38	Stigmaria T.S With x2
GXPS-MFOS-LYCO-39	Stigmaria within Stigmaria
GXPS-MFOS-LYCO-40	Stigmaria Bacupensis – Sevrsl Together
GXPS-MFOS-LYCO-41	Stigmariopsis
GXPS-MFOS-LYCO-42	Stigmaria Archnoidea with characteristic thickened dark inner cortex
<b>GXPS-LYCO-SET</b>	<b>MicroFossils LYCOPODIALES Set of 40 Prepared Slides in a plastic box</b>

<b>MICRO FOSSIL FILICALES: -</b>	
GXPS-MFOS-FILI-1	Botryopteris Ramosa T.S Stem
GXPS-MFOS-FILI-2	Botryopteris Ramosa Root
GXPS-MFOS-FILI-3	Botryopteris Ramosa T.S Petiol
GXPS-MFOS-FILI-4	Botryopteris Cylindrica T.S Stem .
GXPS-MFOS-FILI-5	Botryopteris Cylindrica T.S Root .
GXPS-MFOS-FILI-6	Botryopteris Cylindrica T.S Petiole.
GXPS-MFOS-FILI-7	Botryopteris Antiqua T.S Petiole
GXPS-MFOS-FILI-8	Botryopteris Antiqua Stem
GXPS-MFOS-FILI-9	Botryopteris Hirsuta
GXPS-MFOS-FILI-10	Botryopteris Globossa
GXPS-MFOS-FILI-11	Botryopteris Tridenteta
GXPS-MFOS-FILI-12	Botryopteris Forensis
GXPS-MFOS-FILI-13	Botryopteris Americana
GXPS-MFOS-FILI-14	Botryopteris Sporangia
GXPS-MFOS-FILI-15	Botrychioxylon
GXPS-MFOS-FILI-16	Psalixochlaena (new genus) T.S Petiole
GXPS-MFOS-FILI-17	Paurodendron
GXPS-MFOS-FILI-18	Stauropteris T.S Primary Rachis
GXPS-MFOS-FILI-19	Stauropteris T.S Phyllophore
GXPS-MFOS-FILI-20	Stauropteris Megaspore
GXPS-MFOS-FILI-21	Stauropteris Microspores
GXPS-MFOS-FILI-22	Stauropteris-With four PX group two of which show further branching
GXPS-MFOS-FILI-23	Etapteris-Mature –Complete –H shaped xylem
GXPS-MFOS-FILI-24	Etapteris –Scott -1,11,111, Rachis Stage
GXPS-MFOS-FILI-25	Ankyropteris Stem
GXPS-MFOS-FILI-26	Ankyropteris Westphaliensis T.S Petiole
GXPS-MFOS-FILI-27	Ankyropteris Grayi T.S Petiole
GXPS-MFOS-FILI-28	Zygopterid Petiole
GXPS-MFOS-FILI-29	Psaronius T.S Root
GXPS-MFOS-FILI-30	Stipitopteris ( Psaronius petiole )
GXPS-MFOS-FILI-31	Tempskya T.S Root
GXPS-MFOS-FILI-32	Scolecopteris – Sporangia
GXPS-MFOS-FILI-33	Psaronius Petiole
<b>GXPS-FILI-SET</b>	<b>MicroFossils FILICALES Set of 33 Prepared Slides in a plastic box</b>

110  $\mu\text{m}$ 

## GX Wolf Microscopes Prepared Slides

GX M Part Number	Description
<b>MICROFOSSILS</b>	
GXPS-MFOS-CYCAD-1	Lyginopteris :- Oldhamia T.S stem youn with five distinct mesarch bundles and complete leaf basesin regular sequence .
GXPS-MFOS-CYCAD-2	Lyginopteris Oldhamia T.S stem older
GXPS-MFOS-CYCAD-3	Lyginodendron T.S Stem
GXPS-MFOS-CYCAD-4	Lyginopteris Wood – L.S
GXPS-MFOS-CYCAD-5	Calamotothea Stem T.S
GXPS-MFOS-CYCAD-6	Rachi Aspera With V- Shaped Xylem
GXPS-MFOS-CYCAD-7	Rachi Aspera With 2V- Shaped bunles Seprating Out
GXPS-MFOS-CYCAD-8	Sphenpteris – Young
GXPS-MFOS-CYCAD-9	Kaloxylon Hookeri – Old Stage
GXPS-MFOS-CYCAD-10	Kaloxylon Hookeri- Young Stage
GXPS-MFOS-CYCAD-11	Lageno Stoma L.S Cupule
GXPS-MFOS-CYCAD-12	Heterangium – Young with Charcter stic x1
GXPS-MFOS-CYCAD-13	Heterangium – Old with outer scler enchy matous plates
GXPS-MFOS-CYCAD-14	Heterangium – Stem T.S
GXPS-MFOS-CYCAD-15	Heterangium –with leaf double trace
GXPS-MFOS-CYCAD-16	Schopfiastrum Decussatun
GXPS-MFOS-CYCAD-17	Colpoxylon – The rare genus with branching stele of medullosa type
GXPS-MFOS-CYCAD-18	Medullosa Stem Perfact T.S
GXPS-MFOS-CYCAD-19	Medullosa Root .
GXPS-MFOS-CYCAD-20	Myeloxylon T.S complete scattered bundles
GXPS-MFOS-CYCAD-21	Neuropteris Distinct T.S with midrib and wings
GXPS-MFOS-CYCAD-22	Pecopteris T.S
GXPS-MFOS-CYCAD-23	Linoopteris
GXPS-MFOS-CYCAD-24	Cyclopteris T.S
GXPS-MFOS-CYCAD-25	Alenthopteris T.S
GXPS-MFOS-CYCAD-26	Mariopteris
<b>GXPS-CYCAD-SET</b>	<b>MicroFossils CYCADOFICALES Set of 26 Prepared Slides in a plastic box</b>

110  $\mu\text{m}$

**GX Wolf Microscopes  
Prepared Slides**

GXM Part Number	Description
<b>MICROFOSSILS</b>	
<b>MICRO FOSSIL CORDAITALES</b>	
GXPS-MFOS-CORD-1	Cordaites Stem T.S complete
GXPS-MFOS-CORD-2	Cordaites Root-Youngest
GXPS-MFOS-CORD-3	Cordaites Root-Older
GXPS-MFOS-CORD-4	Cordaites Leaf T.S
GXPS-MFOS-CORD-5	Cordaites Leaf T.S excellent with cyca dean bundles
GXPS-MFOS-CORD-6	Cordaites Leaf associated with winged spores
GXPS-MFOS-CORD-7	Cordaites Seed
GXPS-MFOS-CORD-8	Cordaites Stem With aristia (Peel)
GXPS-MFOS-CORD-9	Cardiocarpus L.S Seed
GXPS-MFOS-CORD-10	Cardiocarpus Spintus Male Flower Pollination Stage
GXPS-MFOS-CORD-11	Cordaianthus One Or Two sections T.S
GXPS-MFOS-CORD-12	Cordaianthus Male Flower
GXPS-MFOS-CORD-13	Cordaitophyllum T.S Leaf
GXPS-MFOS-CORD-14	Nucellangium L.S Well Preserved
<b>GXPS-CORD-SET</b>	<b>MicroFossils CORDAITALES Set of 14 Prepared Slides in a plastic box</b>

110 µm

## GX Wolf Microscopes Prepared Slides

GXM Part Number	Description
<b>MICROFOSSILS</b>	

<b>MICRO FOSSIL ANGIOSPERMS</b>	
GXPS-MFOS-ANGIO-1	Enigmocarpon Parijai Sahni the wonderful fossil fruit section excellently preserved
GXPS-MFOS-ANGIO-2	Veeracarpon Hexaspermum T.S
GXPS-MFOS-ANGIO-3	Sahnianthus Parijai Shukla T.S
GXPS-MFOS-ANGIO-4	Sahnianthus Parijai Shukla L.S
GXPS-MFOS-ANGIO-5	Sahnipushpam SP, Shukla Fossil Flower T.S with pentalocular ovary and outer hypanthium
GXPS-MFOS-ANGIO-6	Tricocites – Single large fruit Clear
GXPS-MFOS-ANGIO-7	Tricocites – With About half dozen fruit in situ ( Peel)
GXPS-MFOS-ANGIO-8	Shuklanthus Superbum verma the monocot inflorescence with central axis having Scattered bundles and numerous six locular Flowers Arranged peripherally cut vertically
GXPS-MFOS-ANGIO-9	Rhizopal moxylon ( Palm root )
GXPS-MFOS-ANGIO-10	Speranitis Seed
GXPS-MFOS-ANGIO-11	Azolla Interappa Sahni (Azollites)
GXPS-MFOS-ANGIO-12	Preserved Fossil Azolla
GXPS-MFOS-ANGIO-13	Rodeites Sporocarpium and micro spores
GXPS-MFOS-ANGIO-14	Sausarosspermum – Allied to Fossil Salvinia Numerous spores with frilled margin
GXPS-MFOS-ANGIO-15	Palmoxyton Sclerodermum Sahni T.S
GXPS-MFOS-ANGIO-16	Palmoxyton Sclerodermum Sahni L.S
GXPS-MFOS-ANGIO-17	Cycadeoidea Stem Excellent
GXPS-MFOS-ANGIO-18	Dadoxylon Resinosum T.S
GXPS-MFOS-ANGIO-19	Dadoxylon Resinosum L.S
GXPS-MFOS-ANGIO-20	Palaeostachya Formosa
GXPS-MFOS-ANGIO-21	Physostoma
GXPS-MFOS-ANGIO-22	Palaeostachya
GXPS-MFOS-ANGIO-23	Palaeostachya Cone L.S
GXPS-MFOS-ANGIO-24	Diplolabis With Trace
GXPS-MFOS-ANGIO-25	Proto Osmundites
GXPS-MFOS-ANGIO-26	Pleuromeia
GXPS-MFOS-ANGIO-27	Lepidostrophaerostoma Pulvinatus With Cone Axis
<b>GXPS-MFOS-ANGIO-SET</b>	<b>MicroFossils ANGIOSPERMS Set of 27 Prepared Slides in a plastic box</b>