

GX Wolf Microscopes

product datasheet

Materials Microscopes

Routine, Research & Semiconductor
Materials Microscopes

UPRIGHT SERIES



GXML3003
Top Light for
Metallurgy



GXML3030
Top & Bottom Light
for Materials



GXMXJL101A
Top Light for
Semiconductors

INVERTED SERIES



GXMXJL17AT
Top Light for
Metallurgy



GXMXJL17ATPOL
Top Light with
Polarisers

GX Wolf Microscopes

product datasheet

Routine, Research & Semiconductor Upright Materials Microscopes



**GXML3003 Trinocular
Reflected Light Metallurgical
Microscope**

A high quality metallurgical microscope equipped with a trinocular head ready for the attachment of a digital camera. This microscope includes a full set of high quality plan achromatic metallurgical objectives on a modern reversed objective turret. Specimens can be placed on the mechanical stage with ergonomically positioned controls for XY stage and focus control. The focussing tension can be adjusted and a focus lock protects the objectives from damage. Illumination is provided from an integral 20W halogen lamp with adjustable intensity, field and aperture diaphragms, polariser and set of Y, G, B and diffusion filters.

This microscope is built on GX Microscopes most popular and highly robust L3000 series elegant microscope frame which provides high stability and a durable platform suitable for the most demanding of applications.

Options include a range of camera adapters, digital cameras, image analysis software, additional objectives and eyepieces.



**GXML3030 Trinocular
Reflected and Transmitted
Light Materials Microscope**

A high quality materials microscope equipped with a trinocular head ready for the attachment of a digital camera. This microscope includes a full set of high quality plan achromatic materials objectives on a modern reversed objective turret. Specimens can be placed on the mechanical stage with ergonomically positioned controls for XY stage and focus control. The focussing tension can be adjusted and a focus lock protects the objectives from damage. Illumination is provided from an integral reflected light illuminator with a 20W halogen lamp with adjustable intensity, field and aperture diaphragms, polariser and set of Y, G, B and diffusion filters. Transmitted light is from a 20W halogen lamp with adjustable intensity and field diaphragm for koehler illumination, projected through an adjustable aperture condenser on a rack and pinion with a blue and diffusion filters supplied

This microscope is built on GX Microscopes most popular and highly robust L3000 series elegant microscope frame which provides high stability and a durable platform suitable for the most demanding of applications.

Options include a range of camera adapters, digital cameras, image analysis software, additional objectives and eyepieces.



**GXMXJL101A Trinocular
Reflected Semiconductor
Microscope**

A highly stable, substantial microscope suitable for viewing silicon wafers, assemblies and standard metallurgical reflective specimens.

It is equipped with a trinocular head ready for the attachment of a digital camera. This microscope includes a full set of high quality plan achromatic materials objectives.

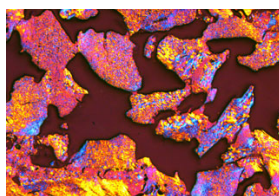
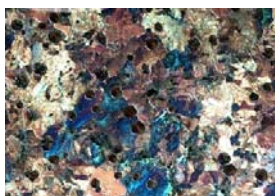
Specimens can be placed on the mechanical stage with controls for XY stage movement including a rapid traverse override control, perfect for scanning over large areas.

The focussing tension can be adjusted and a focus lock protects the objectives from damage.

Illumination is provided from an integral reflected light illuminator with a 20W halogen lamp with adjustable intensity, field and aperture diaphragms, polariser and set of Y, G, B and diffusion filters

This microscope is built on GX Microscopes most substantial and highly robust XJL upright series industrial microscope frame which provides high stability and a durable platform suitable for the most demanding of applications.

Options include a range of camera adapters, digital cameras, image analysis software, additional objectives and eyepieces.



GX Wolf Microscopes

product datasheet

Routine, Research & Semiconductor Inverted Materials Microscopes



GXMXJL17AT Inverted Trinocular Reflected Light Metallurgical Microscope

One of GX Microscopes most popular metallurgical microscopes the GXMXJL17AT is simple to use, especially where you need to examine many specimens with frequent changes of polished 'micros'. The inverted microscope means that each successive specimen is immediately in focus and it is also very useful for large specimens that cannot fit under an upright microscope model.

The microscope is equipped with a trinocular head ready for the attachment of a digital camera. This microscope includes a full set of high quality plan achromatic metallurgical objectives mounted under the stage. The focussing tension can be adjusted and a focus lock protects the objectives from damage. Illumination is provided from a 20W halogen lamphouse with adjustable intensity, field and aperture diaphragms and set of Y, G, B and diffusion filters.

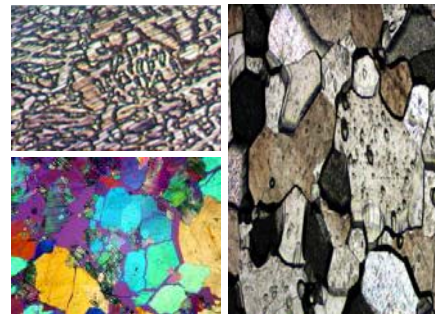
This microscope is built on GX Microscopes' highly robust XJL inverted series microscope frame which provides a stable and durable platform suitable for the most demanding of applications.

Options include a range of camera adapters, digital cameras, image analysis software, additional objectives and eyepieces.



GXMXJL17ATPOL Inverted Trinocular Reflected Light Metallurgical Microscope with Polarisers

Almost identical to the GXMXJL17AT model with the exception that it is provided with a retractable analyser attached to an external lever in the head of the microscope and an insertable, rotatable polarising filter can be introduced into the light path tube to provide partial or fully cross polars.



GX Wolf Microscopes

product datasheet

Routine, Research & Semiconductor Inverted Materials Microscopes

Specifications					
	● std ○ option				
	Microscope Model				
Component	GXML3003	GXML3030	GXXMJL101A	GXXMJL17AT	GXXMJL17ATPOL
Trinocular Head with Phototube (requires specific camera adapter)	●	●	●	●	●
Analyser in Head	●	●	●		●
Pair 10X WF Eyepieces	●	●	●	●	●
Pair 16X WF Eyepieces	○	○	○	○	○
10x Eyepiece with Reticle 10mm/100 Scale Crosshair	○	○	○	○	○
Rotatable Polariser in light path	●	●	●		●
PLL Plan Achromatic non-coverslip corrected objectives:					
5X NA 0.12	●	●	●	○	○
10x NA 0.25	●	●	●	●	●
20x NA 0.40	●	●	●	●	●
40x NA 0.60	○	○	●	●	●
50x NA 0.70	●	●			
60x NA 0.75	○	○		●	●
80X NA 0.80	○	○	●	○	○
100X dry NA 0.85	○	○		○	○
Quadruple nosepiece	●	●		●	●
Quintuple Nosepiece	○	○	●		
Stage type	Double layer mechanical 210mmX140mm Movement range: 75mmX50mm No hole	Double layer mechanical 210mmX140mm Movement range: 75mmX50mm With hole	Three layer mechanical 280mmX270mm Movement range: 204mmX204mm With high speed glide handle	Double layer mechanical 180mmX150mm Movement range: 15mmX15mm	Double layer mechanical 180mmX150mm Movement range: 15mmX15mm
20W 6V Reflected Light Adjustable	●	●	●	●	●
20W 6V Transmitted Light Adjustable		●			
Field and aperture Diaphragms	●	●	●	●	●
Abbe Condenser on rack and pinion NA 1.25		●			
Camera Adapters 0.5X, 1X cmount Canon A640	○	○	○	○	○
Digital cameras up to 14MP	○	○	○	○	○
Imaging Software	○	○	○	○	○

Wolf Laboratories Limited

Colenso House
1 Deans Lane
Pocklington
York YO42 2PX

Tel 01759 301142
Fax 01759 301143
Email sales@wolflabs.co.uk
Web www.wolflabs.co.uk

Due to our policy of continuous development specifications may change without notice

Dec 07