



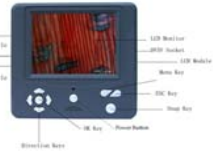

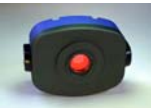






Wolf GX Microscopes Cameras for Microscopy

The GT Vision range of cameras for microscopy provide high levels of functionality at excellent prices are have been specially designed for microscopy use. The GXCAM family includes a range of useful accessories and a very comprehensive GXCAPTURE software package making them the most popular range of cameras we supply.

Product ID Code	Product Name & Description	Picture	Resolution	Application	Output	Microscope & Lens Connection	Software included with camera	Software Functionality (5= most functions)	Accessories Included	Special Features
1108	GXCAM-1.3 Digital Microscope C-Mount Camera		1.3MP 1280x1024 Colour CMOS	General Brightfield Microscopy Phase Contrast, DIC Bright Fluorescence	USB 2 to PC (powered via USB2)	C-Mount Fits to photoport of trinocular head of microscope (requires c-mount adapter, not included) OR fits direct into eyepiece tube	GXCAPTURE	4	Eyepiece Adapter kit to fit into 23.2mm, 30mm eyepiece tubes Stage graticule slide for measurement calibration USB cable Software	Function Rich Software Useful Accessories as Standard
1115	GXCAM-3 Digital Microscope C-Mount Camera		3MP 2048x1536 Colour CMOS	General Brightfield Microscopy Phase Contrast, DIC Bright Fluorescence	USB 2 to PC (powered via USB2)		GXCAPTURE	4		
1122	GXCAM-5 Digital Microscope C-Mount Camera		5MP 2592 x 1944 Colour CMOS	General Brightfield Microscopy Phase Contrast, DIC Bright Fluorescence	USB 2 to PC (powered via USB2)		GXCAPTURE	4		
7896	GXCAM-6 Digital Microscope C-Mount Camera		6.1MP 3008 x 2000 Colour CCD	General Brightfield Microscopy Phase Contrast, DIC Bright Fluorescence	USB 2 to PC (powered via USB2)		GXCAPTURE	4		
7926	GXCAM-9 Digital Microscope C-Mount Camera		9.1MP 3488 x 2616 Colour CMOS	General Brightfield Microscopy Phase Contrast, DIC Bright Fluorescence	USB 2 to PC (powered via USB2)		GXCAPTURE	4		
7544	GXCAM-2TFT Digital Microscope C-Mount Camera with TFT display, video & USB o/p and SD card slot		2MP 1600x1200 Colour CMOS	General Brightfield Microscopy Useful in teaching an multi-user environments	USB 2 to PC with software Video output SD card output Output to built-in TFT display	C-Mount Fits to photoport of trinocular head of microscope (requires c-mount adapter, not included) OR fits direct into eyepiece tube	Not applicable	Not applicable	Eyepiece Adapter kit to fit into 23.2mm, 30mm eyepiece tubes USB cable DC Power supply Software	SD card output Live image to TFT display Video Output USB live image output
7919	GXCAM-1.4MC Monochrome, Cooled, Digital Microscope C-Mount Camera		1.4MP 1360x1024 Monochrome CCD	Fluorescence, phase and DIC Microscopy	USB 2 to PC (powered via USB2)	C-Mount Fits to photoport of trinocular head of microscope (requires c-mount adapter)	GXCAPTURE	4	USB cable DC Power supply Software	Peltier Cooled to -30°C below ambient 12 bit RGB Sony CCD
5694	GXCAM-3.3C Colour, Cooled, Digital Microscope C-Mount Camera		3.3MP 2080x1536 Colour CCD	Fluorescence, phase and DIC Microscopy	USB 2 to PC (powered via USB2)		GXCAPTURE	4	USB cable DC Power supply Software	Peltier Cooled to -30°C below ambient 12 bit Sony CCD

Product ID Code	Product Name	Picture	Resolution	Application	Output	Microscope & Lens Connection	Software included with camera	Software Functionality (5= most functions)	Accessories Included	Special Features
1139	GXCAM-XGA Microscope C-Mount Camera		XGA 1024x768 (4X video resolution) True Colour 8bits per pixel	General Brightfield Microscopy Especially useful in teaching and industrial applications for high quality strain-free image display	Analogue XGA Output Connects direct to PC monitor or XGA projector	C-Mount Fits to photopart of trinocular head of microscope (requires c-mount adapter)	Not applicable	Not applicable	DC Power supply	Extremely high refresh rate direct to a PC monitor or projector No computer Needed Flicker-free True Colour Crosshair Overlay
7902	GXCAM-SXGASD Microscope C-Mount Camera with SD card slot		SXGA 1280x1024 (6X video resolution) True Colour 8bits per pixel	As above but can also be used for Phase Contrast, DIC Bright Fluorescence	Analogue SXGA Output Connects direct to PC monitor or SXGA projector		Not applicable	Not applicable	DC Power supply	
1146	MC280A Video Microscope Eyepiece Camera		640x480 (video resolution)	General Brightfield Microscopy	Analogue Video Output Connects direct to Video monitor or Projector	Fits 23.2mm or 30mm eyepiece tubes	Not applicable	Not applicable	Video Connector	No need for camera adapter fits eyepiece tube direct
1153	MC280B Digital Microscope Eyepiece Camera		640x480 (video resolution)	General Brightfield Microscopy	USB 2 to PC (powered via USB2)	Fits 23.2mm or 30mm eyepiece tubes	Simple capture program and TWAIN driver	1	USB cable Software	No need for camera adapter fits eyepiece tube direct



GXCAM-2TFT



GXCAM 1.3, 3, 5, 9 Camera Kit



Wolf GXCAM Family of USB-2 Digital Microscopy Cameras

	GXCAM-1.3	GXCAM-3	GXCAM-5	GXCAM-6	GXCAM-9	GXCAM-2TFT	GXCAM-1.4MC	GXCAM-3.3C
Image Sensor	1/3" CMOS Colour	1/2" CMOS Colour	1/2.5" CMOS Colour	1/2" CCD Colour	1/2.3" CMOS Colour	1/2" CMOS Colour	1/2" CCD Monochrome	1/1.8" CCD Colour
Sensitivity	1.0v/Lux-sec at 550nm	1.0v/Lux-sec at 550nm	0.53v/Lux-sec at 550nm	0.8v/Lux-sec at 550nm	0.44v/Lux-sec at 550nm	3v/Lux-sec at 550nm	0.15e-/pix/s (cooled) Peltier Cooling to -30 degC below ambient	G Sensitivity 455 mV Peltier Cooling to -30 degC below ambient
Max. Resolution	1280 x 1024 (1.3M Pixels)	2048 x 1536 (3M Pixels)	2592 x 1944 (5.17M Pixels)	3008 x 2000 (6.1M Pixels)	3488x2616 (9.1M Pixels)	1600 x 1200 (2M Pixels)	1360x1024 (1.4M Pixels)	2080 x 1536 (3.3M Pixels)
Speed (PC dependent)	12 frames/sec @ 1280*1024 30 frames/sec @ 640x480	3 frames/sec @ 2048 x1536 12 frames/sec @ 1280*1024 30 frames/sec @ 640x480	2 frames/sec @ 2592 x 1944 3 frames/sec @ 2048 x1536 12 frames/sec @ 1280*1024 30 frames/sec @ 640x480	2 frames/sec @ 3008x 2000 3 frames/sec @ 2048 x1536 12 frames/sec @ 1280*1024 30 frames/sec @ 640x480	2 frames/sec @ 3488x2616 15 frames/sec @ 1280*1024 30 frames/sec @ 640x480	25 frames/sec TFT 25 frames/sec USB (at 640x480)	7.5 frames/sec @ 1360x1024	5 frames/sec @ 2080 x 1536 30 frames/sec @ 640 x 480
White Balance	Automatic/Manual	Automatic/Manual	Automatic/Manual	Automatic/Manual	Automatic/Manual	Automatic/Manual	n/a	Automatic/Manual
Auto-Exposure	Automatic/Manual	Automatic/Manual	Automatic/Manual	Automatic/Manual	Automatic/Manual	Automatic		
Image Output	USB 2.0, 480 Mb/s	USB 2.0, 480 Mb/s	USB 2.0, 480 Mb/s	USB 2.0, 480 Mb/s	USB 2.0, 480 Mb/s	USB 2.0, 480 Mb/s Video SD card (2GB)	USB 2.0, 480 Mb/s	USB 2.0, 480 Mb/s RGB 12 bit output
Power Supply	USB 2.0	USB 2.0	USB 2.0	USB 2.0	USB 2.0	DC 5V	DC 5V	DC 5V
SOFTWARE:								
Image File Formats	JPEG, PNG, SFT, TGA, BMP, TIF, PCX + many more	JPEG, PNG, SFT, TGA, BMP, TIF, PCX + many more	JPEG, PNG, SFT, TGA, BMP, TIF, PCX + many more	JPEG, PNG, SFT, TGA, BMP, TIF, PCX + many more	JPEG, PNG, SFT, TGA, BMP, TIF, PCX + many more	JPEG and AVI	JPEG, PNG, SFT, TGA, BMP, TIF, PCX + many more	JPEG, PNG, SFT, TGA, BMP, TIF, PCX + many more
Functionality	Over 200 functions	Over 200 functions	Over 200 functions	Over 200 functions	Over 200 functions	Camera control and capture	Over 200 functions incl fluorescent imaging suite	Over 200 functions incl fluorescent imaging suite 1ms – 1hour exposure times Calibration and Interactive
Measurements	Calibration and Interactive	Calibration and Interactive	Calibration and Interactive	Calibration and Interactive	Calibration and Interactive	none	Calibration and Interactive	Calibration and Interactive
PHYSICAL CHARACTERISTICS:								
Weight	250g	250g	250g	300g	300g	400g	800g	480g
Camera Size	60mm diameter	60mm diameter	60mm diameter	70mmx60mm	70mmx60mm		70mmx60mm	70mmx60mm
USB Cable	1.5 meter long	1.5 meter long	1.5 meter long	1.5 meter long	1.5 meter long	1 meter long	1.5 meter long	2.5 meter long
Mount	C/CS Mount	C/CS Mount	C/CS Mount	C Mount	C Mount	C Mount	C Mount	C Mount

Designed specifically for high performance scientific imaging these excellent cameras represent outstanding value for money.

Many are supplied complete with a set of adapters for attaching them to the eyepiece tube of most microscopes.

For microscope users with a trinocular headed microscope, all you need is the microscope manufacturer's c-mount adapter for a 0.5in or 0.33in chip camera to attach to the photoport.

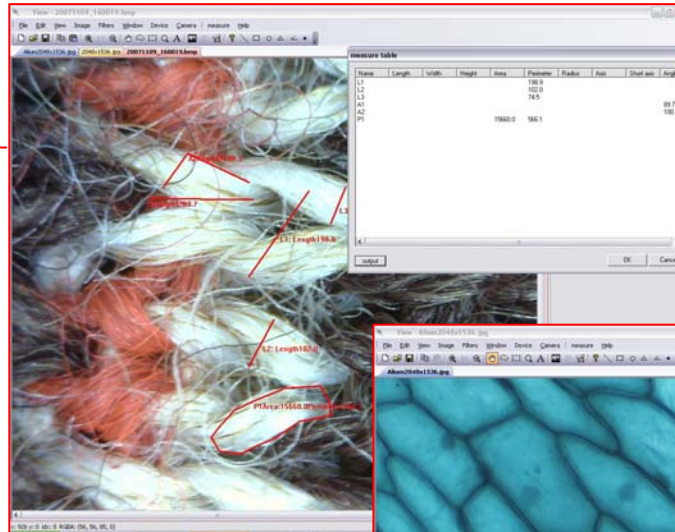
Also included in many of kits is a stage graticule calibration slide, essential for making calibrated measurements with the GXCAPTURE software.

GXCAPTURE is the software program supplied free with the camera which provides a live image from the microscope or lens making focussing and illumination set-up simple, a single click captures the image which can then be saved to disk in a wide range of file formats. The live image can be interactively adjusted to provide the optimum viewing and capture conditions, ideal for teaching and group discussion environments.



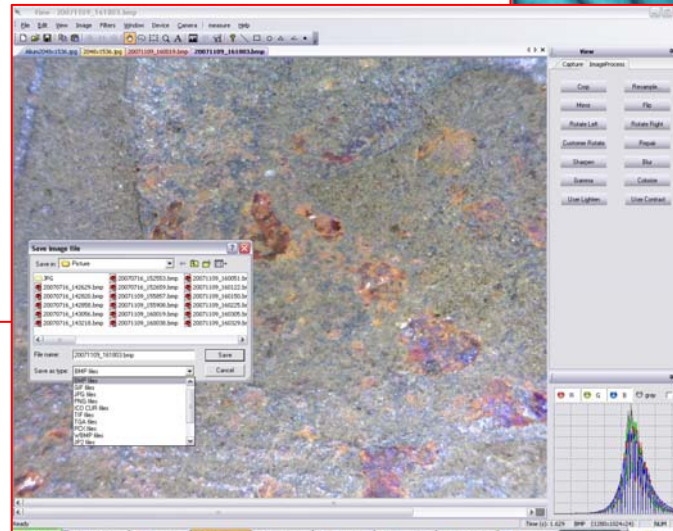
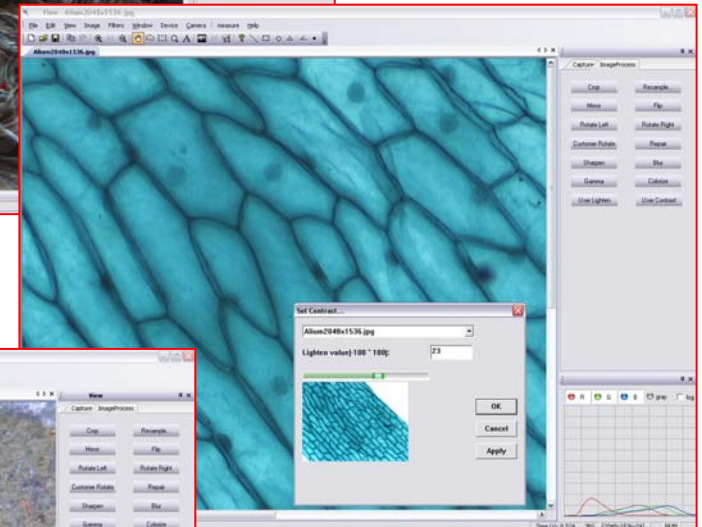
GXCAPTURE Software

With every GXCAM USB digital camera we supply a copy of the GXCapture software application which provides a rich range of camera control, image processing and image measurements.



Function List

Camera Control	Colour Balance
	Resolution
File Formats	Exposure incl .Auto exposure
	Gain
Image processing	10 file formats including JPG with user definable compression
	Reduce/Increase bits/pixel
	Resize
	Mirror/Rotate/Flip
	Transparency
	Greyscale
	Histogram display
	Histogram equalisation and stretching
	Image sharpening and smoothing filters
	FFTs
Measurements	Image colour component splitting
	Image merging for multiprobe fluorescence
	Line
	Point Count
	Area (square, circle, polygon)
	Calibration
	Exportable results table



www.wolflabs.co.uk

Wolf GXCAM Analogue Cameras

GXCAM-XGA & GXCAM-SXGASD

Resolution	4 X Higher Than Standard Video Resolution 1028x 768 (XGA) 1280x1024 (SXGASD)
Interlacing	Non-interlaced , giving a flicker free image, perfect for prolonged strain-free viewing
Colour Fidelity	True Colour 8x8x8 bits per colour
Output Connector	D-Sub 15 pin standard computer monitor cable connector
Mount	C Mount
Sensor Size	0.5in
Overlay Generator	Crosshair overlay on/off, ideal for inspection tasks – Flicker-Free!
Exposure	Manual Control Pot
RGB	Manual Control Pots
Refresh rate	Completely live display 60 frames per second (XGA) 30 frames per second (SXGASD)
Pixel Type	5.2um square
Connects to	PC display or projector for high resolution imaging. No PC needed SD card image output (SXGASD only)

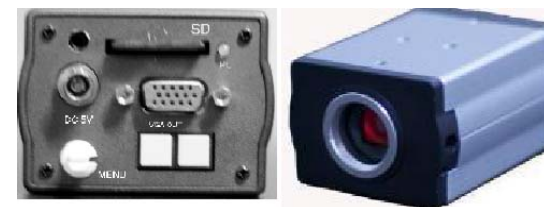
The perfect solution for industrial and teaching applications. This new technology represents a giant leap in terms of performance and resolution compared to video cameras.

The GXCAM-XGA simply plugs direct into your computer display or high resolution projector to provide stunning images from your microscope or lens system.

With extraordinarily high refresh rates and excellent colour fidelity, this new class of camera will revolutionise many high speed industrial inspection applications and hugely enhance teaching and group discussion environments in colleges, universities, hospitals and research institutions.



GXCAM-XGA



GXCAM-SXGASD

www.wolflabs.co.uk