





# GX Microscopes Cameras for Microscopy

The GT Vision range of cameras for microscopy provide high levels of functionality at excellent prices are have been specially designed for microscopy use. The GXCAM family includes a range of useful accessories and a very comprehensive GXCAPTURE software package making them the most popular range of cameras we supply.

Product ID Code	Product Name & Description	Picture	Resolution	Application	Output	Microscope & Lens Connection	Software included with camera	Software Functionality (5= most functions)	Accessories Included	Special Features
1108	<b>GXCAM-1.3</b> Digital Microscope C-Mount Camera		1.3MP 1280x1024 Colour CMOS	General Brightfield Microscopy Phase Contrast, DIC Bright Fluorescence	USB 2 to PC (powered via USB2)	C-Mount Fits to photoport of trinocular head of microscope (requires c-mount adapter, not included) OR fits direct into eyepiece tube	GXCAPTURE	4	Eyepiece Adapter kit to fit into 23.2mm, 30mm eyepiece tubes  Stage graticule slide for measurement calibration  USB cable  Software	Function Rich Software Useful Accessories as Standard
1115	<b>GXCAM-3</b> Digital Microscope C-Mount Camera		3MP 2048x1536 Colour CMOS	General Brightfield Microscopy Phase Contrast, DIC Bright Fluorescence	USB 2 to PC (powered via USB2)		GXCAPTURE	4		
1122	<b>GXCAM-5</b> Digital Microscope C-Mount Camera		5MP 2592 x 1944 Colour CMOS	General Brightfield Microscopy Phase Contrast, DIC Bright Fluorescence	USB 2 to PC (powered via USB2)		GXCAPTURE	4		
7896	<b>GXCAM-6</b> Digital Microscope C-Mount Camera		6.1MP 3008 x 2000 Colour CCD	General Brightfield Microscopy Phase Contrast, DIC Bright Fluorescence	USB 2 to PC (powered via USB2)		GXCAPTURE	4		
7926	<b>GXCAM-9</b> Digital Microscope C-Mount Camera		9.1MP 3488 x 2616 Colour CMOS	General Brightfield Microscopy Phase Contrast, DIC Bright Fluorescence	USB 2 to PC (powered via USB2)		GXCAPTURE	4		
7544	<b>GXCAM-2TFT</b> Digital Microscope C-Mount Camera with TFT display, video & USB o/p and SD card slot		2MP 1600x1200 Colour CMOS	General Brightfield Microscopy Useful in teaching an multi-user environments	USB 2 to PC with software Video output SD card output Output to built-in TFT display	C-Mount Fits to photoport of trinocular head of microscope (requires c-mount adapter, not included) OR fits direct into eyepiece tube	Not applicable	Not applicable	Eyepiece Adapter kit to fit into 23.2mm, 30mm eyepiece tubes  USB cable  DC Power supply  Software	SD card output  Live image to TFT display  Video Output  USB live image output
7919	<b>GXCAM-1.4MC</b> Monochrome, Cooled, Digital Microscope C-Mount Camera		1.4MP 1360x1024 Monochrome CCD	Fluorescence, phase and DIC Microscopy	USB 2 to PC (powered via USB2)	C-Mount Fits to photoport of trinocular head of microscope (requires c-mount adapter)	GXCAPTURE	4	USB cable  DC Power supply  Software	Peltier Cooled to -30°C below ambient  12 bit RGB  Sony CCD
5694	<b>GXCAM-3.3C</b> Colour, Cooled, Digital Microscope C-Mount Camera		3.3MP 2080x1536 Colour CCD	Fluorescence, phase and DIC Microscopy	USB 2 to PC (powered via USB2)		GXCAPTURE	4	USB cable  DC Power supply  Software	Peltier Cooled to -30°C below ambient  12 bit  Sony CCD

Product ID Code	Product Name	Picture	Resolution	Application	Output	Microscope & Lens Connection	Software included with camera	Software Functionality (5= most functions)	Accessories Included	Special Features
1139	<b>GXCAM-XGA</b> Microscope C-Mount Camera		XGA 1024x768 (4X video resolution) True Colour 8bits per pixel	General Brightfield Microscopy Especially useful in teaching and industrial applications for high quality strain-free image display	Analogue XGA Output Connects direct to PC monitor or XGA projector	C-Mount Fits to photopart of trinocular head of microscope (requires c-mount adapter)	Not applicable	Not applicable	DC Power supply	Extremely high refresh rate direct to a PC monitor or projector No computer Needed Flicker-free True Colour Crosshair Overlay
7902	<b>GXCAM-SXGASD</b> Microscope C-Mount Camera with SD card slot		SXGA 1280x1024 (6X video resolution) True Colour 8bits per pixel	As above but can also be used for Phase Contrast, DIC Bright Fluorescence	Analogue SXGA Output Connects direct to PC monitor or SXGA projector		Not applicable	Not applicable	DC Power supply	
1146	<b>MC280A</b> Video Microscope Eyepiece Camera		640x480 (video resolution)	General Brightfield Microscopy	Analogue Video Output Connects direct to Video monitor or Projector	Fits 23.2mm or 30mm eyepiece tubes	Not applicable	Not applicable	Video Connector	No need for camera adapter fits eyepiece tube direct
1153	<b>MC280B</b> Digital Microscope Eyepiece Camera		640x480 (video resolution)	General Brightfield Microscopy	USB 2 to PC (powered via USB2)	Fits 23.2mm or 30mm eyepiece tubes	Simple capture program and TWAIN driver	1	USB cable Software	No need for camera adapter fits eyepiece tube direct



GXCAM-2TFT



GXCAM 1.3, 3, 5, 9 Camera Kit



# GXCAM Family of USB-2 Digital Microscopy Cameras

	GXCAM-1.3	GXCAM-3	GXCAM-5	GXCAM-6	GXCAM-9	GXCAM-2TFT	GXCAM-1.4MC	GXCAM-3.3C
<b>Image Sensor</b>	1/3" CMOS Colour	1/2" CMOS Colour	1/2.5" CMOS Colour	1/2" CCD Colour	1/2.3" CMOS Colour	1/2" CMOS Colour	1/2" CCD Monochrome	1/1.8" CCD Colour
<b>Sensitivity</b>	1.0v/Lux-sec at 550nm	1.0v/Lux-sec at 550nm	0.53v/Lux-sec at 550nm	0.8v/Lux-sec at 550nm	0.44v/Lux-sec at 550nm	3v/Lux-sec at 550nm	0.15e-/pix/s (cooled) Peltier Cooling to -30 degC below ambient	G Sensitivity 455 mV Peltier Cooling to -30 degC below ambient
<b>Max. Resolution</b>	1280 x 1024 (1.3M Pixels)	2048 x 1536 (3M Pixels)	2592 x 1944 (5.17M Pixels)	3008 x 2000 (6.1M Pixels)	3488x2616 (9.1M Pixels)	1600 x 1200 (2M Pixels)	1360x1024 (1.4M Pixels)	2080 x 1536 (3.3M Pixels)
<b>Speed (PC dependent)</b>	12 frames/sec @ 1280*1024 30 frames/sec @ 640x480	3 frames/sec @ 2048 x1536 12 frames/sec @ 1280*1024 30 frames/sec @ 640x480	2 frames/sec @ 2592 x 1944 3 frames/sec @ 2048 x1536 12 frames/sec @ 1280*1024 30 frames/sec @ 640x480	2 frames/sec @ 3008x 2000 3 frames/sec @ 2048 x1536 12 frames/sec @ 1280*1024 30 frames/sec @ 640x480	2 frames/sec @ 3488x2616 15 frames/sec @ 1280*1024 30 frames/sec @ 640x480	25 frames/sec TFT 25 frames/sec USB (at 640x480)	7.5 frames/sec @ 1360x1024	5 frames/sec @ 2080 x 1536 30 frames/sec @ 640 x 480
<b>White Balance</b>	Automatic/Manual	Automatic/Manual	Automatic/Manual	Automatic/Manual	Automatic/Manual	Automatic/Manual	n/a	Automatic/Manual
<b>Auto-Exposure</b>	Automatic/Manual	Automatic/Manual	Automatic/Manual	Automatic/Manual	Automatic/Manual	Automatic		
<b>Image Output</b>	USB 2.0, 480 Mb/s	USB 2.0, 480 Mb/s	USB 2.0, 480 Mb/s	USB 2.0, 480 Mb/s	USB 2.0, 480 Mb/s	USB 2.0, 480 Mb/s Video SD card (2GB)	USB 2.0, 480 Mb/s	USB 2.0, 480 Mb/s RGB 12 bit output
<b>Power Supply</b>	USB 2.0	USB 2.0	USB 2.0	USB 2.0	USB 2.0	DC 5V	DC 5V	DC 5V
<b>SOFTWARE:</b>								
<b>Image File Formats</b>	JPEG, PNG, SFT, TGA, BMP, TIF, PCX + many more	JPEG, PNG, SFT, TGA, BMP, TIF, PCX + many more	JPEG, PNG, SFT, TGA, BMP, TIF, PCX + many more	JPEG, PNG, SFT, TGA, BMP, TIF, PCX + many more	JPEG, PNG, SFT, TGA, BMP, TIF, PCX + many more	JPEG and AVI	JPEG, PNG, SFT, TGA, BMP, TIF, PCX + many more	JPEG, PNG, SFT, TGA, BMP, TIF, PCX + many more
<b>Functionality</b>	Over 200 functions	Over 200 functions	Over 200 functions	Over 200 functions	Over 200 functions	Camera control and capture	Over 200 functions incl fluorescent imaging suite	Over 200 functions incl fluorescent imaging suite 1ms – 1hour exposure times
<b>Measurements</b>	Calibration and Interactive	Calibration and Interactive	Calibration and Interactive	Calibration and Interactive	Calibration and Interactive	none	Calibration and Interactive	Calibration and Interactive
<b>PHYSICAL CHARACTERISTICS:</b>								
<b>Weight</b>	250g	250g	250g	300g	300g	400g	800g	480g
<b>Camera Size</b>	60mm diameter	60mm diameter	60mm diameter	70mmx60mm	70mmx60mm		70mmx60mm	70mmx60mm
<b>USB Cable</b>	1.5 meter long	1.5 meter long	1.5 meter long	1.5 meter long	1.5 meter long	1 meter long	1.5 meter long	2.5 meter long
<b>Mount</b>	C/CS Mount	C/CS Mount	C/CS Mount	C Mount	C Mount	C Mount	C Mount	C Mount

*Designed specifically for high performance scientific imaging these excellent cameras represent outstanding value for money.*

Many are supplied complete with a set of adapters for attaching them to the eyepiece tube of most microscopes.

For microscope users with a trinocular headed microscope, all you need is the microscope manufacturer's c-mount adapter for a 0.5in or 0.33in chip camera to attach to the photoport.

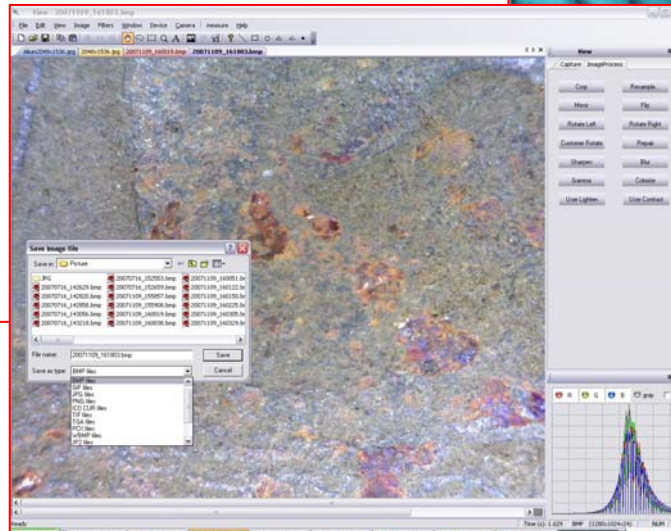
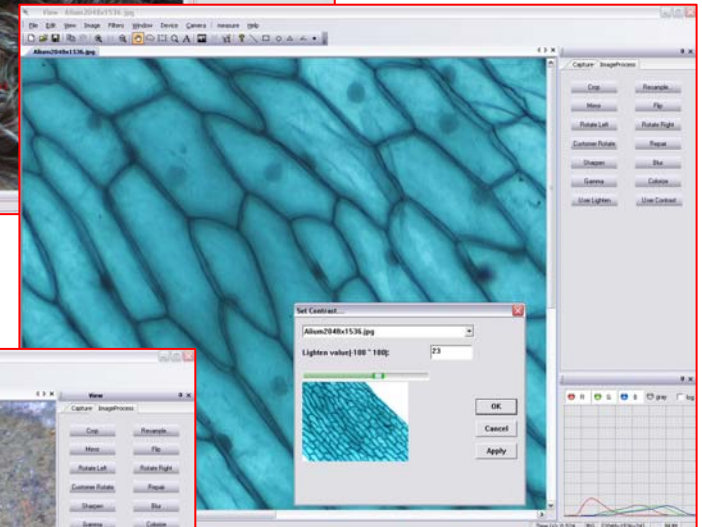
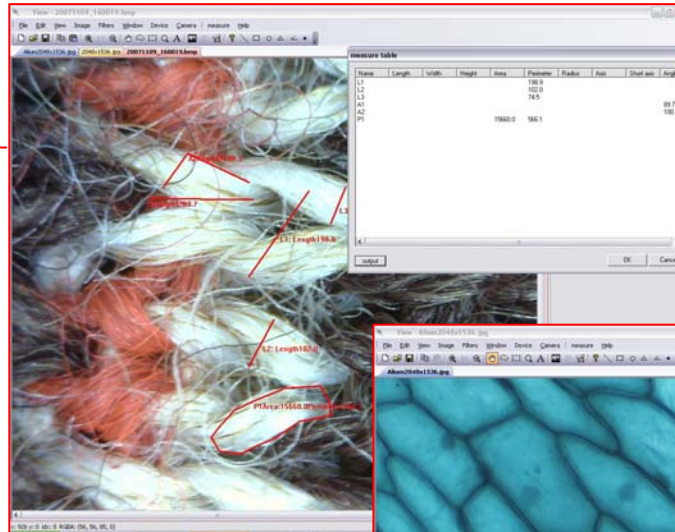
Also included in many of kits is a stage graticule calibration slide, essential for making calibrated measurements with the GXCAPTURE software.

GXCAPTURE is the software program supplied free with the camera which provides a live image from the microscope or lens making focussing and illumination set-up simple, a single click captures the image which can then be saved to disk in a wide range of file formats. The live image can be interactively adjusted to provide the optimum viewing and capture conditions, ideal for teaching and group discussion environments.



## GXCAPTURE Software

With every GXCAM USB digital camera we supply a copy of the GXCapture software application which provides a rich range of camera control, image processing and image measurements.



### Function List

**Camera Control**  
 Colour Balance  
 Resolution  
 Exposure incl .Auto exposure  
 Gain

**File Formats**  
 10 file formats including JPG with user definable compression

Reduce/Increase bits/pixel  
 Resize  
 Mirror/Rotate/Flip  
 Transparency  
 Greyscale

**Image processing**  
 Histogram display  
 Histogram equalisation and stretching  
 Image sharpening and smoothing filters  
 FFTs

Image colour component splitting  
 Image merging for multiprobe fluorescence  
 Line

**Measurements**  
 Point Count  
 Area (square, circle, polygon)  
 Calibration  
 Exportable results table

# GXCAM Analogue Cameras

## GXCAM-XGA & GXCAM-SXGASD

<b>Resolution</b>	4 X Higher Than Standard Video Resolution 1028x 768 (XGA) 1280x1024 (SXGASD)
<b>Interlacing</b>	Non-interlaced , giving a flicker free image, perfect for prolonged strain-free viewing
<b>Colour Fidelity</b>	True Colour 8x8x8 bits per colour
<b>Output Connector</b>	D-Sub 15 pin standard computer monitor cable connector
<b>Mount</b>	C Mount
<b>Sensor Size</b>	0.5in
<b>Overlay Generator</b>	Crosshair overlay on/off, ideal for inspection tasks – Flicker-Free!
<b>Exposure</b>	Manual Control Pot
<b>RGB</b>	Manual Control Pots
<b>Refresh rate</b>	Completely live display 60 frames per second (XGA) 30 frames per second (SXGASD)
<b>Pixel Type</b>	5.2um square
<b>Connects to</b>	PC display or projector for high resolution imaging. No PC needed SD card image output (SXGASD only)

*The perfect solution for industrial and teaching applications. This new technology represents a giant leap in terms of performance and resolution compared to video cameras.*

The GXCAM-XGA simply plugs direct into your computer display or high resolution projector to provide stunning images from your microscope or lens system.

With extraordinarily high refresh rates and excellent colour fidelity, this new class of camera will revolutionise many high speed industrial inspection applications and hugely enhance teaching and group discussion environments in colleges, universities, hospitals and research institutions.



GXCAM-XGA



GXCAM-SXGASD

[www.wolflabs.co.uk](http://www.wolflabs.co.uk)