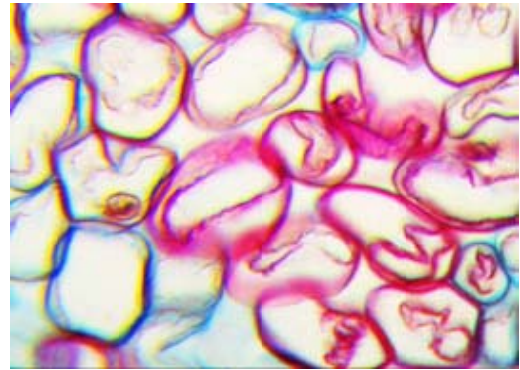
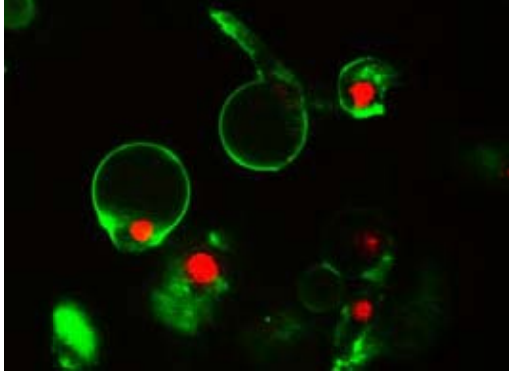


New Product: GXCAM 3.3 FLC Cooled Camera for Brightfield and Fluorescence Imaging



Overview:

The GXCAM 3.3 FLC cooled CCD cameras from GT Vision provides high-quality scientific grade digital images in brightfield, phase contrast, DIV and high sensitivity applications. By combining low noise electronics and a high-quantum efficiency detector, the camera can capture a wide dynamic range of intensities while maintaining quantitative linearity. Added features such as a fast analogue-to-digital converter (ADC), very low read noise, and programmable gain control makes the GXCAM 3.3FLC camera an ideal detector for fluorescence imaging applications.



Peltier Cooling Mechanism:

The GXCAM 3.3FLC camera uses a Peltier cooling mechanism to cool the area around the imaging section to 30°C below room temperature (compared to its un-cooled state). This enables it to suppress thermal background noise and obtain high-contrast images when capturing fluorescence images that require long exposure times.

Camera Features:

	GXCAM 3.3 FLC
Sensor manufacturer	Sony
Sensor type	ICX412AQ
Scan mode	Interline
Sensor format	1/1.8"
Pixel size	3.46µm x 3.46µm
G Sensitivity	455 mV
Resolution	2080H x 1536V
Filter	R, G, B primary color mosaic filters
Lens mount	C-mount
Max Frame rate	5fps(2080 x 1536) 30fps(640 x 480)
Low Speed Readout	Yes
Output RGB	12 bit
Peltier Cooled	-30□ below ambient
Fan	30x30/5000rpm
Power	5V power supply
Exposure control	Auto/Manual
Exposure time	1ms-1hour
Angle light prohibition	Yes
White balance	Auto/Manual
Parameter	Image size, brightness ,gain, exposure time, RGB
Interface	USB2.0/480Mb/s
USB cable	2.5M
Power supply	USB2.0
Dimension	100mm*81mm*48mm (HXBXT)
Weight	480g
Operating Temperature	0-60°C
Humidity	45%-85%
Storage temperature	-20-70°C

Wolf Laboratories Limited
Colenso House
Deans Lane
Pocklington
York
YO422PX

Tel: 01759 301142
Fax: 01759 301143
E-mail: sales@wolflabs.co.uk
www.wolflabs.co.uk