

ESCO PASS BOX

Esco Pass Boxes are self-contained units installed at the entrance to cleanrooms. They minimize the amount of particulate contamination entering the cleanroom by reducing operator "traffic".

Equipment and materials are passed into the cleanroom via the pass box, which is equipped with a mechanical interlock system that prevents both doors from being opened at the same time.

The Esco Pass Box is an inexpensive way to maintain the cleanliness of your cleanroom and is easy to install and adaptable to existing facilities.

FEATURES

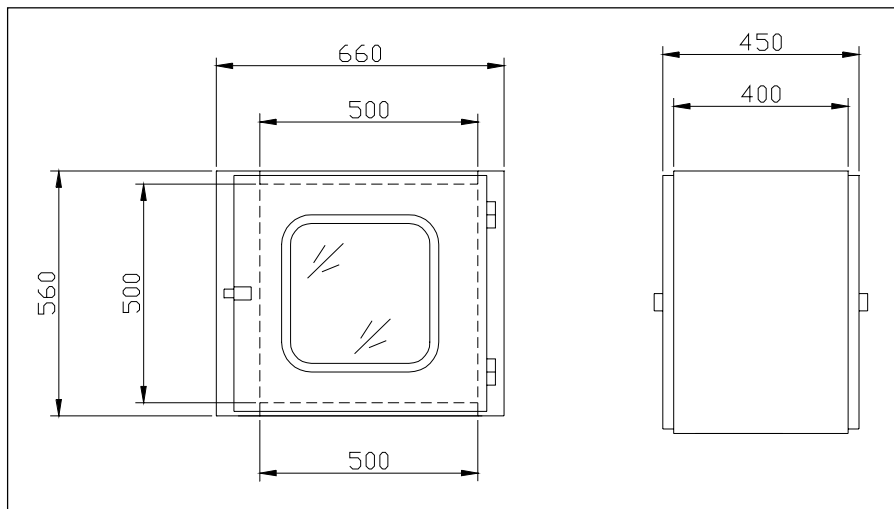
- Rigid and rust-proof construction of electro-galvanised steel sheets
- Abrasion-resistant epoxy-coated steel
- Easy to clean stainless steel base
- Acrylic panel door gives clear view of internal chamber
- Mechanical interlock system with reinforced construction reduces cross-contamination
- Easy to install and adaptable to existing facilities



SPECIFICATIONS

MODEL	EQU/00-EPB-1	EQU/00-EPB-2
External Dimensions (L x W x H mm)	660 x 560 x 450	760 x 660 x 650
Internal Dimensions (L x W x H mm)	500 x 500 x 400	600 x 600 x 600
Gross Weight (kg)	120 kg	150 kg
Net Weight (kg)	90 kg	120 kg
Crating Size (mm)	810 x 810 x 710	910 x 910 x 910

ENGINEERING DETAILS (EPB-1)



LEGEND

1. Acrylic Panel
2. Interlock Mechanism
3. Handle
4. Door
5. Removable Flange (Optional)

OPTIONS

- Removable Flange
- Buzzer
- Intercom
- Electrical Interlock
- Glass Panel Door
- Conveyor System
- Support Stand
- Stainless Steel Shelf

ESCO AIR SHOWER PASS BOX

Esco Air Shower Pass Boxes are self-contained air chambers installed at the entrance to cleanrooms in order to minimize the amount of particulate contamination entering the cleanroom.

Equipment and materials are passed through the air shower pass box while particulate contamination is washed off with high velocity HEPA-filtered air jets.

Contaminated air is then taken in through the base of the unit, filtered, and recirculated into the chamber. To facilitate the proper removal of particulate contamination, Esco Air Shower Pass Boxes are built-to-order with a standard shower duration of at least 12 seconds.

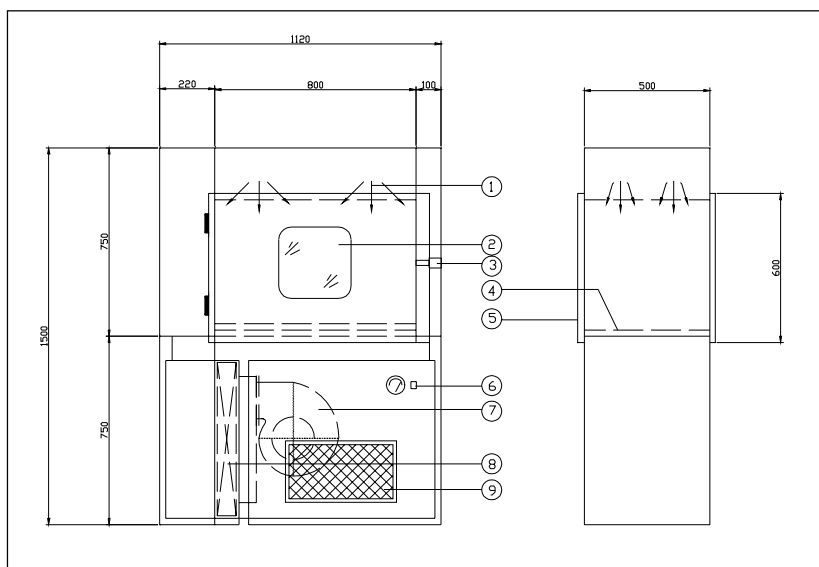
FEATURES

- Rigid and rust-proof construction of electro-galvanised steel sheets
- Abrasion-resistant oven-baked powder-coated finish
- Permanently lubricated direct drive centrifugal blower
- Equipped with a high quality HEPA filter (filtration efficiency of more than 99.999% at 0.3 microns)
- Stainless steel nozzles provide high velocity air jets for an efficient scrubbing action to remove particulate contamination
- Ultra-quiet noise level of less than 70 dBA during operation
- Electrical interlock system reduces cross-contamination
- Easy to clean stainless steel perforated base
- Acrylic panel door allows a clear view of the internal chamber
- Easy to install and adaptable to existing facilities



SPECIFICATIONS

MODEL	EQU/00-EAS-PB
External Dimensions (L x W x H mm)	1120 x 540 x 1500
Internal Work Zone (L x W x H mm)	800 x 500 x 600
Air Change	1360 per hour
Air Velocity (m/s)	22 m/s
Number of Nozzles	4
Air Shower Duration (seconds)	Factory setting at 12 seconds (adjustable)
Filtration Efficiency	Main Filter: ≥ 99.999 at $0.3 \mu\text{m}$ Pre-filter: Arrestance 90%, efficiency 20%
Filtration Elements	Main Filter: HEPA filter Pre-Filter: Washable non-woven polyester fibers
Main Body	1.5 mmt electro-galvanised steel White oven-baked epoxy powder-coated finish
Power Supply	230V, single phase 50 Hz (international electrical configurations available)
Power Consumption	0.30 kW
Gross Weight	274 kg
Net Weight	150 kg
Crating Size (mm)	1270 x 700 x 1650



ENGINEERING DETAILS

1. Nozzle
2. Acrylic Panel
3. Handle
4. Stainless Steel Perforated Base
5. Door
6. Operating Switches
7. Blower
8. HEPA Filter
9. Pre-Filter

OPTIONS

- ULPA Filter
- Glass Panel
- Conveyor System

ESCO AIR SHOWER PASS THROUGH

Esco Air Shower Pass Throughs are self-contained air chambers installed at the entrance to cleanrooms in order to minimize the amount of particulate contamination entering the cleanroom. Equipment and materials are passed through the air shower pass through while particulate contamination is washed off with high velocity HEPA-filtered air jets. Contaminated air is then taken in through the base of the unit, filtered, and recirculated into the chamber. To facilitate the proper removal of particulate contamination, Esco Air Shower Pass Throughs are built-to-order with a standard shower duration of at least 12 seconds. Esco offers a wide range of modular units in different sizes fitted with advanced PLCs (programmable logic controllers) for easy sequence customization.

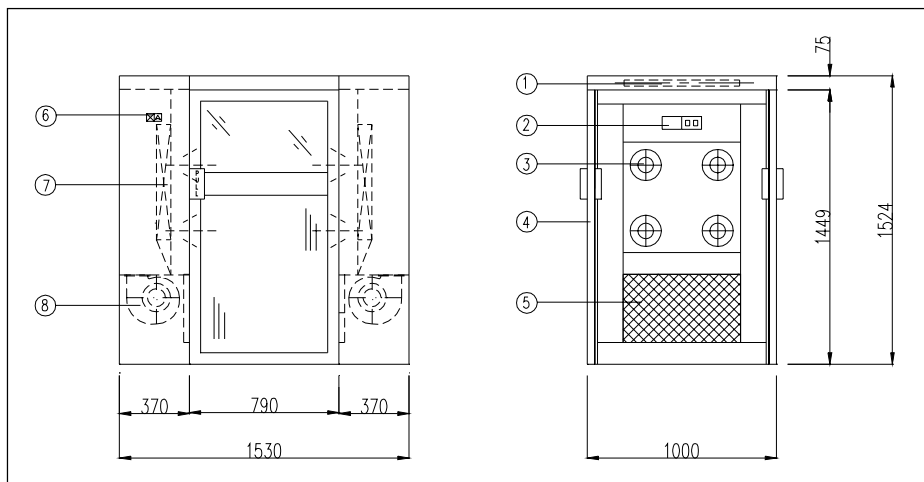
FEATURES

- Rigid and rust-proof construction of electro-galvanised steel sheets
- Abrasion-resistant oven-baked powder-coated finish
- Permanently lubricated direct drive centrifugal blower
- Stainless steel nozzles provide high velocity air jets for an efficient scrubbing action to remove particulate contamination
- Ultra-quiet noise level of less than 70 dBA during operation
- Proprietary PLC (programmable logic controller) for sequence control
- Electrical interlock system reduces cross-contamination
- Lightweight industrial-grade aluminium and glass doors
- Modular design facilitates ease of movement and installation



SPECIFICATIONS

MODEL	EQU/01-EASPT-1260	EQU/01-EASPT-1530
External Dimensions (L x W x H mm)	1260 x 1000 x 1524	1530 x 1000 x 1524
Internal Work Zone (L x W x H mm)	790 x 920 x 1450	790 x 920 x 1450
Air Change	280 per hour	560 per hour
Air Velocity (m/s)	25 m/s	
Number of Nozzles	4	8
Air Shower Duration	Factory setting at 12 seconds (adjustable)	
Filtration Efficiency	Main Filter: >99.999% at 0.3 µm Pre-Filter: Arrestance 90%, efficiency 20%	
Filtration Elements	Main Filter: HEPA filter Pre-Filter: Washable non-woven polyester fibers	
Fluorescent Lighting	20W x 1	
Main Body	1.5mmt electro-galvanised steel White oven-baked epoxy powder-coated finish	
Power Supply	230V, single phase 50 Hz (international electrical configurations available)	
Power Consumption	0.32 kW	0.62 kW
Gross Weight (kg)	550 kg	680 kg
Net Weight (kg)	300 kg	380 kg
Crating Size (mm)	1420 x 1220 x 1750	1680 x 1220 x 1750



ENGINEERING DETAILS (EASPT-1530)

1. Fluorescent Light
2. Operating Switch
3. Nozzles
4. Door
5. Pre-Filter
6. Indicator Light
7. HEPA Filter
8. Blower

OPTIONS

- ULPA Filter
- Automatic Sliding Door
- Automatic Swing Door
- Complete Stainless Steel Construction with Aluminium Frame Door