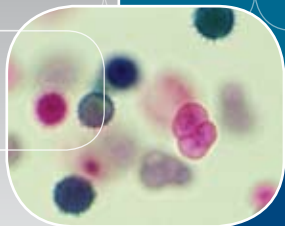


Airstream®



Esco Airstream Laminar Flow Clean Bench
Model AHC-4D_

Laminar Flow Clean Benches, Horizontal and Vertical
The Leading Solution for Research Laboratories



ESCO
WORLD CLASS. WORLDWIDE.



Esco Experience

Esco is the world leader in premium laminar flow clean benches for the global life sciences market. Since 1978, Esco has installed tens of thousands of laminar flow clean benches providing reliable protection for samples and work processes for a multitude of applications.

Esco laminar flow clean benches are the premium selection for the discerning researcher, offering a combination of value, high quality construction, low operating noise levels, and a wide product range to suit all budgets, from the industry leader.

Airstream Horizontal Laminar Flow Clean Bench, Model AHC-4D. Shown with optional caster wheels stand, ergonomic lab chair and footrest.

	Cabinet Performance	Air Quality	Filtration	Electrical Safety
Standards Compliance	EN 12469* IEST-RP-CC002.2, Worldwide	ISO 14644.1 Class 3, Worldwide AS 1386 Class 1.5, Australia JIS B9920 Class 3, Japan	EN-1822 (H14), Europe IEST-RP-CC001.3, Worldwide IEST-RP-CC007.1, Worldwide IEST-RP-CC034.1, Worldwide	IEC 61010-1, Worldwide EN 61010-1, Europe UL 61010-1, USA CAN/CSA-22.2, No.61010-1

* Type-tested for cross-contamination and product protection using the microbiological testing methods adapted from this biological safety cabinet standard.

Save Time and Money, Sentinel™ Delta Microprocessor Monitors Airflow in Real Time to Prevent Sample Contamination

Touchpad data entry buttons permit control settings and access to default settings.

Color coded indicator lamps display green for fan operation, fluorescent lights and electrical outlet; and red for caution (UV lamp ON).

Digital read-out with alpha-numeric display indicates all input, status and alarm functions.

All functions can be user activated through touch-pad programming access; see Operations Manual.

Esco Sentinel Delta Microprocessor Control System, Programmable

■ When programmed ON, an airflow alarm warns of deviations from normal velocities.

Horizontal and Vertical Laminar Flow Clean Benches

Esco Airstream Laminar Flow Clean Benches are available in both horizontal and vertical flow models. In both models, air is taken in from above the cabinet and passed through a ULPA filter.

- In horizontal flow models filtered air is then passed through the main chamber of the clean bench in a horizontal laminar (unidirectional) air stream and is exhausted through the front opening of the cabinet.
- In vertical flow models, filtered air is passed through the main chamber of the clean bench in a vertical laminar (unidirectional) air stream before being exhausted through the front opening of the clean bench.

In horizontal laminar flow clean benches (AHC) there is a slightly reduced level of turbulence compared to vertical flow clean benches (AVC) due to the airflow not striking the work surface. However vertical laminar flow clean benches generate less turbulence around large pieces of equipment as compared to horizontal laminar flow clean benches.

Airstream Horizontal Laminar Flow Clean Bench, Model AHC-4D. Shown with optional caster wheels stand. Available in 0.6, 0.9, 1.2, 1.5 and 1.8m widths (2', 3', 4', 5' and 6').



Airstream Vertical Laminar Flow Clean Bench, Model AVC-4D. Shown with optional caster wheels stand. Available in 0.6, 0.9, 1.2, 1.5 and 1.8m widths (2', 3', 4', 5' and 6').



Airstream® Horizontal Laminar Flow Clean Benches

Provide Product Protection

High Performance Blower System

German made ebm-papst® permanently lubricated, centrifugal motor/blowers with external rotor designs.

Motors selected for energy efficiency, compact design, and flat profile. Completely integrated assembly optimizes motor cooling.

All rotating parts balanced for smooth, quiet, vibration-free operation.



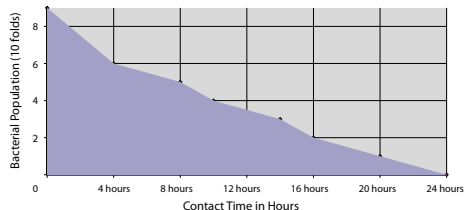
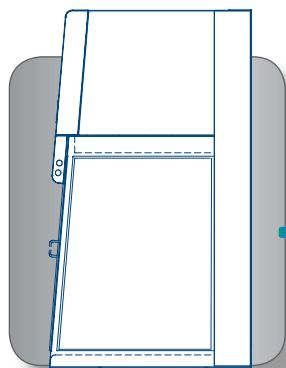
ULPA Filtration System

Swedish Camfil Farr® ULPA filters operate at a typical efficiency of >99.999% at 0.1 to 0.3 micron sizes, providing superior product protection over conventional HEPA filters.

4

User Interface

An angled front, curved work surface front edge, and glass sides promote ergonomics.



Built-In Protection

External surfaces are powder coated with Esco **ISOCIDE™** to eliminate 99.9% of surface bacteria within 24 hours of exposure.



Airstream Horizontal Flow Clean Bench, Model AHC-4D.



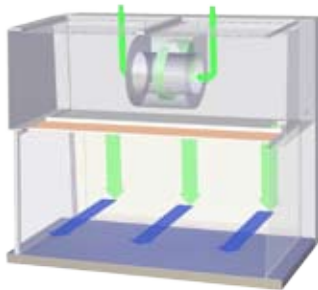
Sentinel™ Delta Microprocessor Control System

Soft touch controls for blower, light, outlet and UV are easy to clean. A temperature-compensated air velocity sensor and real-time display allows airflow to be monitored more accurately compared with conventional pressure gauges.



Work Top

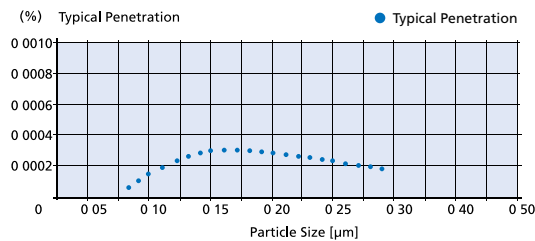
The spill-retaining work top design with a recessed central area contains accidental liquid spills.



Proven Product Protection

Horizontal laminar air flow with ULPA filtration, >99.999% at 0.1 to 0.3 microns, provides superior product protection.

Esco Filter Efficiency



Esco clean benches use ULPA filters (per IEST-RP-CC001.3) instead of conventional HEPA filters commonly found in laminar flow clean benches. While HEPA filters offer 99.99% typical efficiency at 0.3 micron level, ULPA filters provide 99.999% typical efficiency for particle sizes of 0.1 to 0.3 micron level.

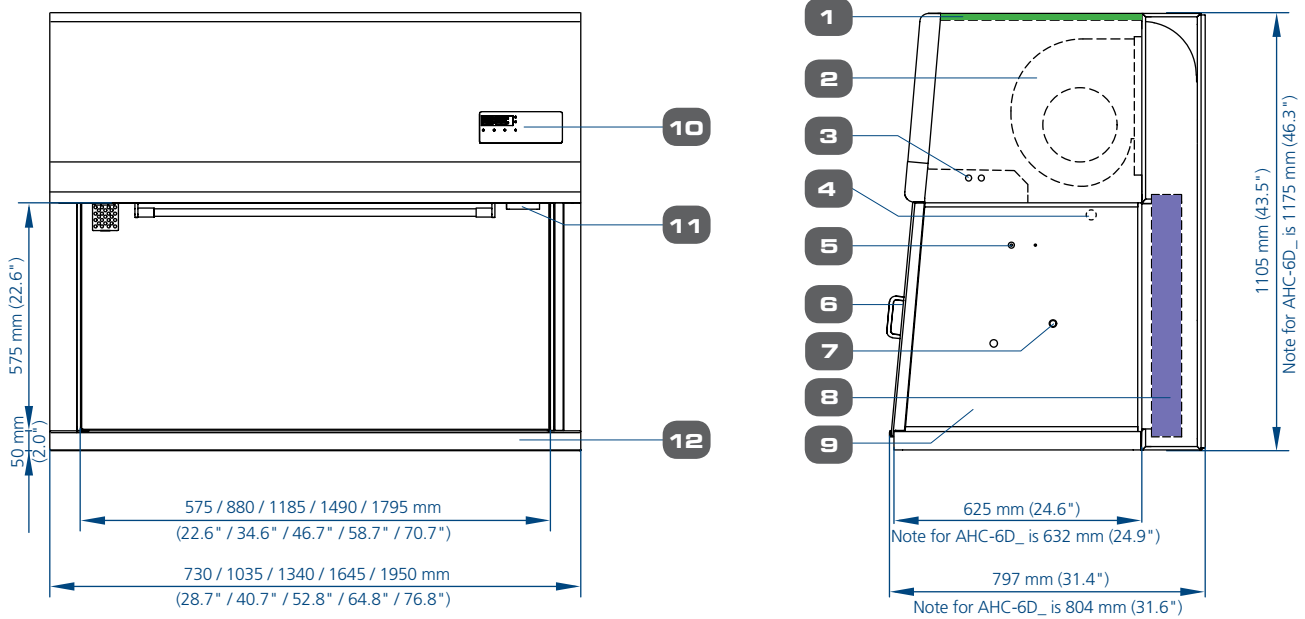
Key Features

- ULPA filters (per IEST-RP-CC-001.3) tested to a typical efficiency of >99.999% for 0.1 to 0.3 micron particles are better than HEPA filters. ULPA filters last as long as conventional HEPA filters and have similar replacement costs.
- All Esco laminar flow clean benches provide ISO Class 3 air cleanliness within the work zone as per ISO 14644.1, significantly cleaner than the usual Class 5 classification on clean benches offered by the competition.
- The intelligent blower system maintains airflow as the filter becomes loaded, ensuring optimum efficiency and product protection.
- An additional disposable pre-filter traps large particles in the inflow air prior to reaching the main filter, protecting against damage and prolonging filter life.
- All Esco products are manufactured for the most demanding laboratory applications. All components are designed for maximum chemical resistance and enhanced durability for a long service life. The main body of the clean bench is constructed of industrial-grade electro-galvanized steel.
- One piece formed stainless steel work surface with a curved front edge is designed for maximum operator comfort.
- Built-in warm white, electronically ballasted, 5000k lighting provides excellent illumination of the work zone and reduces operator fatigue. The reliable lighting system is zero-flicker and instant start.
- Esco Laminar Flow Clean Benches have been tested for cross-contamination and product protection using microbiological test methods specified in EN12469.
- Each clean bench is individually factory tested for safety and performance in accordance with international standards.
- All electrical components are UL listed or UL recognized, ensuring superior electrical safety for the operator.
- Esco **ISOCIDE™** antimicrobial coating on all painted surfaces.

ESCO

WORLD CLASS. WORLDWIDE.

Model AHC (D-Series), Airstream Horizontal Laminar Flow Clean Bench Technical Specifications



- | | | |
|---|--|---|
| <ol style="list-style-type: none"> 1. Pre-filter 2. Blower 3. Fluorescent lamp 4. UV light Retrofit Kit provision 5. IV bar Retrofit Kit provision | <ol style="list-style-type: none"> 6. Optional front cover 7. Service fixture Retrofit Kit provision (2 holes on each side) 8. ULPA filter 9. Tempered glass side panels | <ol style="list-style-type: none"> 10. Esco Sentinel™ Delta microprocessor control system 11. Standard electrical outlet Retrofit Kit provision 12. Stainless steel work top |
|---|--|---|

6

Warranty

All Esco Airstream, vertical and horizontal flow clean benches are covered by an extended 3 year warranty, excluding consumable parts and accessories. Contact your local Sales Representative for warranty details.

Accessories and Options

Esco offers a variety of options and accessories to meet local applications. Contact Esco or your local Sales Representative for ordering information.

Support Stands

- Fixed height, available 711 mm (28") or 860 mm (34")
 - With leveling feet (SPL)
 - With casters (SPC)
- Adjustable height, hydraulic range 711 mm (28") to 860 mm (34")
 - Manual or electrical lift (SPM)
 - With casters

Electrical Outlets and Utility Fixtures

- Electrical outlet, ground fault, North America
- Electrical outlet, Euro/ Worldwide
- Petcock (air, gas, vacuum)
 - North America (American) style
 - Euro/Worldwide style DIN 12898, DIN 12919, DIN 3537

Cabinet Accessories

- Germicidal UV lamp
- Transparent front cover (recommended when UV lamp is used)
- PVC armrest
- Height-adjustable lab chair
- Ergonomic foot rest
- IV bar, with hooks



General Specifications, Airstream Horizontal Laminar Flow Clean Benches

Note to customer: Insert electrical voltage number into last model number digit _ when ordering.

Model		AHC-2D_	AHC-3D_	AHC-4D_	AHC-5D_	AHC-6D_
Nominal Size		0.6 meters (2')	0.9 meters (3')	1.2 meters (4')	1.5 meters (5')	1.8 meters (6')
External Dimensions (W x D x H)	Without Base Stand	730 x 797 x 1105 mm 28.7" x 31.4" x 43.5"	1035 x 797 x 1105 mm 40.7" x 31.4" x 43.5"	1340 x 797 x 1105 mm 52.8" x 31.4" x 43.5"	1645 x 797 x 1105 mm 64.8" x 31.4" x 43.5"	1950 x 804 x 1175 mm 76.8" x 31.6" x 46.3"
	With Optional Base Stand, 711 mm (28") type	730 x 797 x 1816 mm 28.7" x 31.4" x 71.5"	1035 x 797 x 1816 mm 40.7" x 31.4" x 71.5"	1340 x 797 x 1816 mm 52.8" x 31.4" x 71.5"	1645 x 797 x 1816 mm 64.8" x 31.4" x 71.5"	1950 x 804 x 1886 mm 76.8" x 31.6" x 74.2"
Internal Work Area, Dimensions (W x D x H)*		575 x 625 x 575 mm 22.6" x 24.6" x 22.6"	880 x 625 x 575 mm 34.6" x 24.6" x 22.6"	1185 x 625 x 575 mm 46.7" x 24.6" x 22.6"	1490 x 625 x 575 mm 58.7" x 24.6" x 22.6"	1795 x 632 x 575 mm 70.7" x 24.9" x 22.6"
Internal Work Area, Space		0.36 m ² (3.87 sq.ft)	0.55 m ² (5.92 sq.ft)	0.74 m ² (7.96 sq.ft)	0.94 m ² (10.11 sq.ft)	1.13 m ² (12.16 sq.ft)
Average Airflow Velocity	0.45 m/s (90 fpm) at initial setpoint					
Air Volume		531 m ³ /h (313 cfm)	815 m ³ /h (480 cfm)	1099 m ³ /h (647 cfm)	1383 m ³ /h (814 cfm)	1667 m ³ /h (981 cfm)
ULPA Filter Typical Efficiency	>99.999% at particle size between 0.1 to 0.3µm					
Sound Emission Per IEST-RP-CC002.2*		<54 dBA	<55 dBA	<57 dBA	<59 dBA	<60 dBA
Fluorescent Lamp Intensity At Zero Ambient		>1550 Lux (>144 foot candles)	>1600 Lux (>149 foot candles)	>1800 Lux (>182 foot candles)	>1600 Lux (>149 foot candles)	>1600 Lux (>149 foot candles)
Cabinet Construction	Main Body	1.2 mm (0.05") 18 gauge electrogalvanised steel with white oven-baked epoxy-polyester powder-coated finish.				
	Work Zone	1.2 mm (0.05") 18 gauge stainless steel, grade 304, with 4B finish				
	Side Walls	UV absorbing tempered glass, 5 mm (0.2"), colorless and transparent				
Electrical**	220-240V, AC, 50Hz, 1Ø	AHC-2D1	AHC-3D1	AHC-4D1	AHC-5D1	AHC-6D1
	Cabinet Power/ Amp	300 W/ 2A	340 W/ 2A	390 W/ 2A	400 W/ 2A	850 W/ 5A
	Outlet Amp Fuse	5A	5A	5A	5A	5A
	Full Load Amps	7A	7A	7A	7A	10A
	BTU/ Hr	1024	1160	1331	1365	2900
	110-120V, AC, 60Hz, 1Ø	AHC-2D2	AHC-3D2	AHC-4D2	AHC-5D2	AHC-6D2
	Cabinet Power/ Amp	580 W/ 6.5A	650 W/ 6.5A	700 W/ 6.5A	700 W/ 6.5A	900 W/ 10.5A
	Outlet Amp Fuse	5A	5A	5A	5A	5A
	Full Load Amps	11.5A	11.5A	11.5A	11.5A	10.5A
	BTU/ Hr	1979	2218	2388	2388	3071
	220-240V, AC, 60Hz, 1Ø	AHC-2D3	AHC-3D3	AHC-4D3	AHC-5D3	AHC-6D3
	Cabinet Power/ Amp	300 W/ 2A	340 W/ 2A	390 W/ 2A	400 W/ 2A	850 W/ 5A
	Outlet Amp Fuse	5A	5A	5A	5A	5A
	Full Load Amps	7A	7A	7A	7A	10A
	BTU/ Hr	1024	1160	1331	1365	2900
Net Weight***		101 kg (223 lbs)	125 kg (276 lbs)	150 kg (331 lbs)	169 kg (373 lbs)	190 kg (419 lbs)
Shipping Weight***		136 kg (301 lbs)	164 kg (362 lbs)	190 kg (419 lbs)	240 kg (529 lbs)	263 kg (580 lbs)
Shipping Dimensions, Maximum (W x D x H)***		860 x 860 x 1460 mm 33.8" x 33.8" x 57.5"	1120 x 860 x 1460 mm 44" x 33.8" x 57.5"	1430 x 860 x 1460 mm 56.3" x 33.8" x 57.5"	1720 x 860 x 1460 mm 67.7" x 33.8" x 57.5"	2050 x 860 x 1460 mm 80.7" x 33.8" x 57.5"
Shipping Volume, Maximum***		1.08 m ³ (38 cu.ft)	1.41 m ³ (50 cu.ft)	1.80 m ³ (64 cu.ft)	2.16 m ³ (76 cu.ft)	2.57 m ³ (90 cu.ft)

* Noise reading in open field condition/ anechoic chamber.

** Additional voltages may be available; contact Esco for ordering information.

*** Clean bench only; excludes optional stand.

Airstream® Vertical Laminar Flow Clean Benches

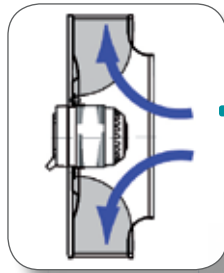
Provide Product Protection

High Performance Fan System

German made ebm-papst® permanently lubricated, centrifugal motor/fans with external rotor designs.

Motors selected for energy efficiency, compact design, and flat profile. Completely integrated assembly optimizes motor cooling.

All rotating parts balanced for smooth, quiet, vibration-free operation.

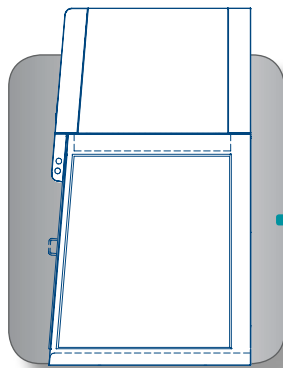


ULPA Filtration System

Swedish Camfil Farr® ULPA filters operate at a typical efficiency of >99.999% at 0.1 to 0.3 micron sizes, providing superior product protection over conventional HEPA filters.

User Interface

An angled front, curved work surface front edge, and glass sides promote ergonomics. The powder coated work zone rear wall eliminates harsh reflections which may be associated with conventional stainless steel interiors. The vertical air flow design minimizes direct airflow which may lead to dry eyes and fatigue on horizontal flow models.



Proven Product Protection

Vertical laminar air flow with ULPA filtration, >99.999% at 0.1 to 0.3 microns, provides superior product protection.



Airstream Vertical Flow Clean Bench,
Model AVC-4D...



Sentinel™ Delta Microprocessor Control System

Soft touch controls for blower, light, outlet and UV are easy to clean. A temperature-compensated air velocity sensor and real-time display allows airflow to be monitored more accurately compared with conventional pressure gauges.



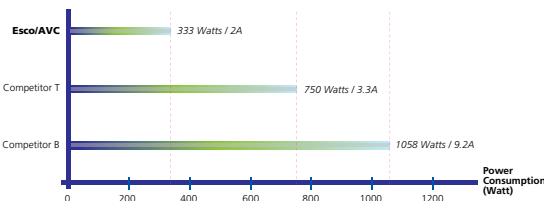
Vertical Laminar Flow

Compared with horizontal flow models, vertical flow clean benches generate less turbulence when large instruments or items are placed in the work zone. Auto-Purge™ slots minimize airflow turbulence in the rear of the work space.



Work Top

The spill-retaining work top design with a recessed central area contains accidental liquid spills. (Not applicable for Model AVC-6D_.)



Energy Efficiency Chart

Esco vertical laminar flow clean benches utilise extremely efficient backward curve fans, allowing for exceedingly low levels of cabinet power consumption that is unparalleled in the industry.

The result is greater cost-savings for the user with no compromise in cabinet performance.

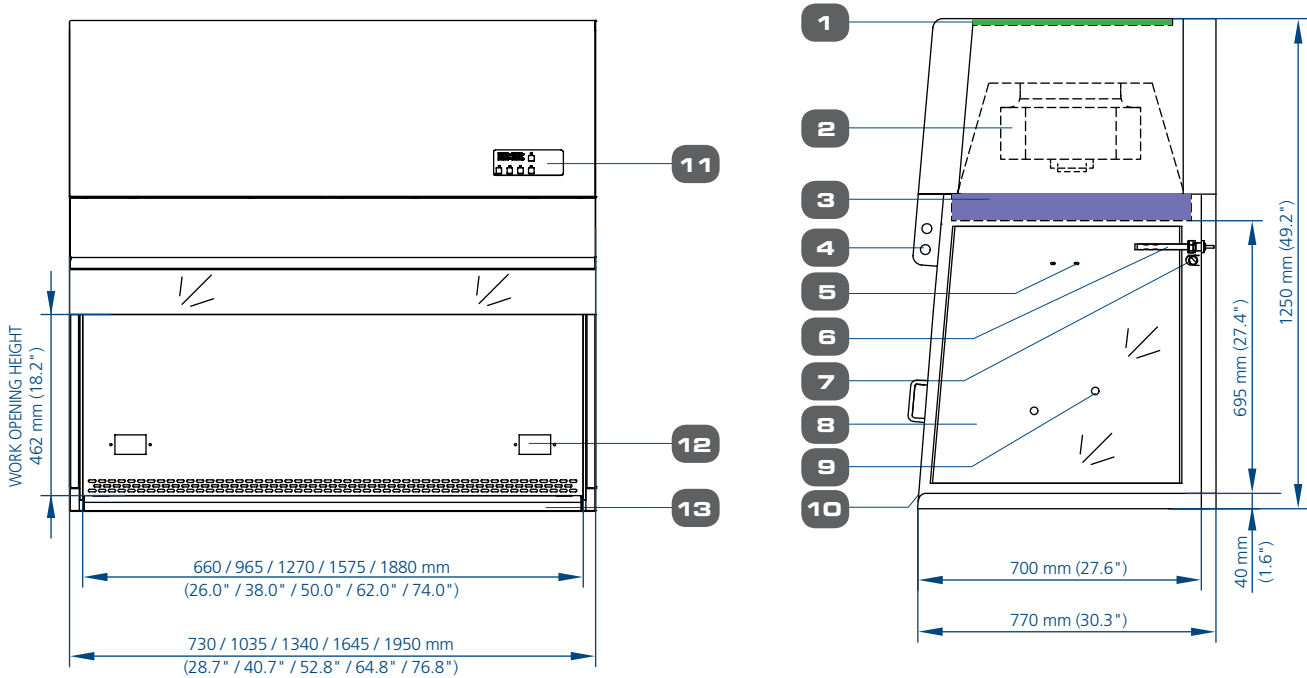
Key Features

- ULPA filters (per IEST-RP-CC-001.3) tested to a typical efficiency of >99.999% for 0.1 to 0.3 micron particles are better than HEPA filters. ULPA filters last as long as conventional HEPA filters and have similar replacement costs.
- All Esco laminar flow clean benches provide ISO Class 3 air cleanliness within the work zone as per ISO 14644.1, significantly cleaner than the usual Class 5 classification on clean benches offered by the competition.
- The backward curved wheel with external rotor motor delivers class-leading energy efficiency for lower operating costs.
- An additional disposable pre-filter traps large particles in the inflow air prior to reaching the main filter, protecting against damage and prolonging filter life.
- All Esco products are manufactured for the most demanding laboratory applications. All components are designed for maximum chemical resistance and enhanced durability for a long service life. The main body of the clean bench is constructed of industrial-grade electrogalvanized steel.
- One piece formed stainless steel work surface with a curved front edge is designed for maximum operator comfort.
- Built-in warm white, electronically ballasted, 5000k lighting provides excellent illumination of the work zone and reduces operator fatigue. The reliable lighting system is zero-flicker and instant start.
- Esco Laminar Flow Clean Benches have been tested for cross-contamination and product protection using microbiological test methods specified in EN12469.
- Each clean bench is individually factory tested for safety and performance in accordance with international standards.
- All electrical components are UL listed or UL recognized, ensuring superior electrical safety for the operator.
- Esco **ISOCIDE™** antimicrobial coating on all painted surfaces.

ESCO

WORLD CLASS. WORLDWIDE.

Model AVC (D-Series), Airstream Vertical Laminar Flow Clean Bench Technical Specifications



1. Pre-filter
2. Fan
3. ULPA filter
4. Fluorescent lamp
5. IV bar Retrofit Kit provision
6. Airflow & temperature sensor

7. UV light Retrofit Kit provision
8. Tempered glass side panels
9. Service fixture Retrofit Kit provision (2 holes on each side)
10. Optional front cover
11. Esco Sentinel™ Delta microprocessor control system

12. Electrical outlet Retrofit Kit provision (1 for 2ft and 3ft models, 2 for 4ft and above)
13. Stainless steel work top with front curved edge

10

Warranty

All Esco Airstream, vertical and horizontal flow clean benches are covered by an extended 3 year warranty, excluding consumable parts and accessories. Contact your local Sales Representative for warranty details.

Accessories and Options

Esco offers a variety of options and accessories to meet local applications. Contact Esco or your local Sales Representative for ordering information.

Support Stands

- Fixed height, available 711 mm (28") or 860 mm (34")
 - With leveling feet (SPL)
 - With casters (SPC)
- Adjustable height, hydraulic range 711 mm (28") to 860 mm (34")
 - Manual or electrical lift (SPM)
 - With casters

Electrical Outlets and Utility Fixtures

- Electrical outlet, ground fault, North America
- Electrical outlet, Euro/ Worldwide
- Petcock (air, gas, vacuum)
 - North America (American) style
 - Euro/Worldwide style DIN 12898, DIN 12919, DIN 3537

Cabinet Accessories

- Germicidal UV lamp
- Transparent front cover (recommended when UV lamp is used)
- PVC armrest
- Height-adjustable lab chair
- Ergonomic foot rest
- IV bar, with hooks



Airstream®

Laminar Flow Clean Benches • Laminar Flow Clean Benches, Horizontal and Vertical (D-Series)

General Specifications, Airstream Vertical Laminar Flow Clean Benches

Note to customer: Insert electrical voltage number into last model number digit _ when ordering.

Model		AVC-2D_	AVC-3D_	AVC-4D_	AVC-5D_	AVC-6D_	
Nominal Size		0.6 meters (2')	0.9 meters (3')	1.2 meters (4')	1.5 meters (5')	1.8 meters (6')	
External Dimensions (W x D x H)	Without Base Stand	730 x 770 x 1250 mm 28.7" x 30.3" x 49.2"	1035 x 770 x 1250 mm 40.7" x 30.3" x 49.2"	1340 x 770 x 1250 mm 52.8" x 30.3" x 49.2"	1645 x 770 x 1250 mm 64.8" x 30.3" x 49.2"	1950 x 770 x 1250 mm 76.8" x 30.3" x 49.2"	
	With Optional Base Stand, 711 mm (28") type	730 x 770 x 1961 mm 28.7" x 30.3" x 77.2"	1035 x 770 x 1961 mm 40.7" x 30.3" x 77.2"	1340 x 770 x 1961 mm 52.8" x 30.3" x 77.2"	1645 x 770 x 1961 mm 64.8" x 30.3" x 77.2"	1950 x 770 x 1961 mm 76.8" x 30.3" x 77.2"	
Internal Work Area, Dimensions (W x D x H)		660 x 700 x 695 mm 26.0" x 27.6" x 27.4"	965 x 700 x 695 mm 38.0" x 27.6" x 28.3"	1270 x 700 x 695 mm 50.0" x 27.6" x 28.3"	1575 x 700 x 695 mm 62.0" x 27.6" x 28.3"	1880 x 700 x 695 mm 74.0" x 27.6" x 28.3"	
Internal Work Area, Space		0.39 m ² (4.2 sq.ft)	0.59 m ² (6.3 sq.ft)	0.79 m ² (8.5 sq.ft)	0.98 m ² (10.54 sq.ft)	1.18m ² (12.7 sq.ft)	
Average Airflow Velocity		0.45 m/s (90 fpm) at initial setpoint					
Air Volume		603 m ³ /h (355 cfm)	903 m ³ /h (531 cfm)	1204 m ³ /h (709 cfm)	1506 m ³ /h (886 cfm)	1806 m ³ /h (1063 cfm)	
ULPA Filter Typical Efficiency		>99.999% at particle size between 0.1 to 0.3µm					
Sound Emission Per IEST- RP-CC002.2*		<55.5 dBA	56.5 dBA	57.5 dBA	58 dBA	58.5 dBA	
Fluorescent Lamp Intensity At Zero Ambient		>900 Lux (>83.6 foot candles)	>1075 Lux (>100 foot candles)	>1260 Lux (> 117 foot candles)	>1000 Lux (>93 foot candles)	>1100 Lux (>102 foot candles)	
Clean bench Construction	Main Body	1.2 mm (0.05") 18 gauge electro-galvanised steel with white oven-baked epoxy-polyester powder-coated finish					
	Work Zone	1.2 mm (0.05") 18 gauge stainless steel, grade 304, with 4B finish					
	Side Walls	UV absorbing tempered glass, 5 mm (0.2"), colorless and transparent					
Electrical**	220-240V, AC, 50Hz, 1Ø	AVC-2D1	AVC-3D1	AVC-4D1	AVC-5D1	AVC-6D1	
	Cabinet Power/ Amp	350 W/ 2A	370 W/ 2A	380 W/ 2A	400 W/ 2A	750 W/ 4A	
	Outlet Amp Fuse	5A	5A	5A	5A	5A	
	Full Load Amps	7A	7A	7A	7A	9A	
	BTU/ Hr	1194	1262	1297	1365	2320	
	110-120V, AC, 60Hz, 1Ø	AVC-2D2	AVC-3D2	AVC-4D2	AVC-5D2	AVC-6D2	
	Cabinet Power/ Amp	350 W/ 3.5A	380 W/ 3.5A	400 W/ 3.5A	450 W/ 3.5A	800 W/ 6.5A	
	Outlet Amp Fuse	5A	5A	5A	5A	5A	
	Full Load Amps	8.5A	8.5A	8.5A	9A	11.5A	
	BTU/ Hr	1194	1297	1365	1535	2559	
	220-240V, AC, 60Hz, 1Ø	AVC-2D3	AVC-3D3	AVC-4D3	AVC-5D3	AVC-6D3	
	Cabinet Power/ Amp	350 W/ 2A	370 W/ 2 A	380 W/ 2 A	400 W/ 2A	750 W/ 4A	
	Outlet Amp Fuse	5 A	5 A	5 A	5A	5 A	
	Full Load Amps	7 A	7 A	7 A	7A	9 A	
	BTU/ Hr	1194	1262	1297	1365	2320	
	Net Weight***		106 kg (234 lbs)	127 kg (280 lbs)	152 kg (335 lbs)	171 kg (414 lbs)	225 kg (496 lbs)
	Shipping Weight***		162 kg (357 lbs)	171 kg (377 lbs)	205 kg (452 lbs)	232 kg (538 lbs)	282 kg (622 lbs)
	Shipping Dimensions, Maximum (W x D x H)***		860 x 860 x 1490 mm 33.8" X 33.8" X 58.6"	1130 x 860 x 1490 mm 44.5" x 33.8" x 58.6"	1430 x 860 x 1490 mm 56.3" x 33.8" x 58.6"	1740 x 860 x 1490 mm 68.5" x 33.8" x 58.6"	2050 x 860 x 1490 mm 80.7" x 33.8" x 58.6"
Shipping Volume, Maximum***		1.10 m ³ (38.8 cu.ft)	1.45 m ³ (51.2 cu.ft)	1.83 m ³ (64.6 cu.ft)	2.23 m ³ (78.7 cu.ft)	2.63 m ³ (92.8 cu.ft)	

* Noise reading in open field condition/ anechoic chamber.

** Additional voltages may be available; contact Esco for ordering information.

*** Clean bench only, excludes optional stand.