

Data Analysis Software

Gen5™ Data Analysis Software



Microplate Software for the way you work.

Designed by engineers focused on microplate instrument technology for microplate users, Gen5™ works the way you do. Experience for yourself more efficient workflow with Gen5's logical interface designed to easily flow from reading parameters, to plate layout, to data reduction, to fully customized publication-ready reports. Or, export data directly into Excel® with a "Quick Export" button. Gen5's intuitive design will be evident in increased laboratory efficiency.

Spend more time on the science and less time on the software.

Features

Simplicity

Gen5's contemporary interface provides easy access to all major functions of the software including reading parameters, plate layout, data reduction, on-line help, wizards, tutorials and sample protocols.

Efficiency

Quick launch buttons on the welcome screen provide links to recently used files, pre-programmed protocols and other key functions such as Quick Read and Quick Export directly into Excel®.

Power

StepWise™ tools allow limitless combinations of procedural steps and data reduction criteria for a wide variety of applications in a logical and clearly defined sequence that is easily viewed on the screen. In Gen5, choose from standard protocols, multi-plate protocols or cross-plate results analysis for the way you work.

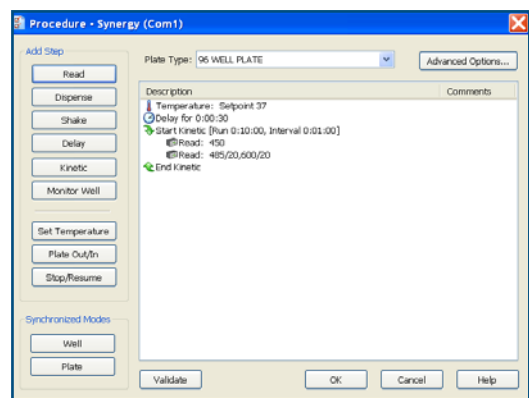
Versatility

Report and PowerExport builders are fast and flexible output tools to produce publication-ready reports using data matrices, statistics tables, protocols and plate information, and much more.

Compliance

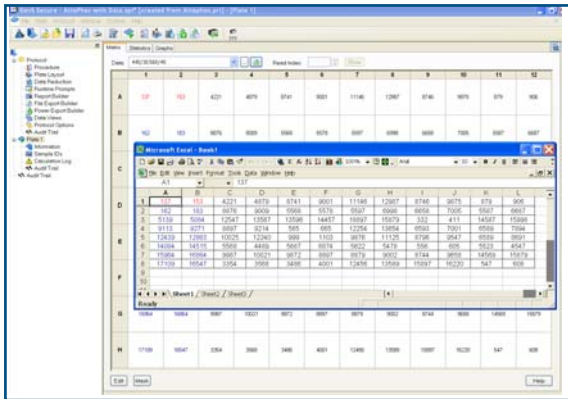
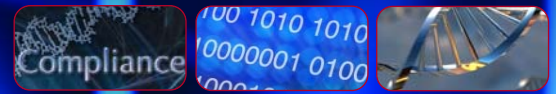
For compliance to 21 CFR Part 11, Gen5 Secure provides unsurpassed system, data and protocol protection. Multiple user settings and permissions make it easy to comply with laboratory policies.

StepWise™ Tools

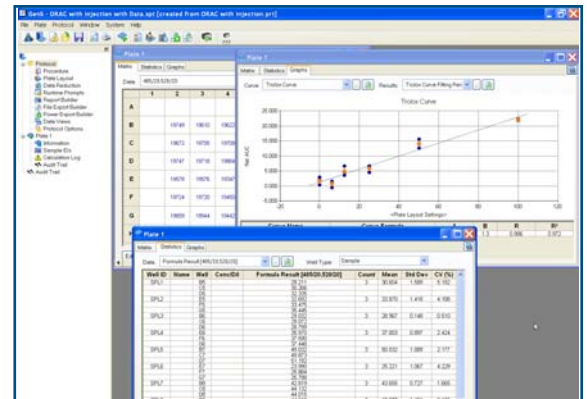


The StepWise™ tools in Gen5 make procedure and data reduction creation logical and quick for basic or complex protocols. Steps available in the Procedure are dependent on the attached reader's capabilities.

Data Analysis Software



When you need to export data for further analysis, Gen5's unique Quick Export feature exports directly into Microsoft® Excel®.



Gen5 includes many pre-programmed protocols, such as the ORAC assay above, for quick and easy modification and use.

Applications

Gen5, used with BioTek microplate readers, supports many microplate applications in Absorbance, Top and Bottom Fluorescence, Flash and Glow Luminescence, Time-Resolved Fluorescence and Fluorescence Polarization, including:

- Calcium Uptake
- Nucleic Acid Quantitation
- Protein Assays
- Dual-Luciferase® Assays
- Enzyme Kinetics
- Live/Dead Assays
- Cell Proliferation Studies
- ELISA
- FRET Assays
- Endotoxin Analysis
- GFP Assays
- BRET
- HTRF®

Recommended System Configurations

- Windows® XP or Windows® 2000 (Professional Editions)
- Intel® Pentium® III-Class PC (or compatible) processor (500 MHz or higher)
- 512 MB RAM or higher
- 2 GB Hard Drive space or higher
- Designed for XGA Resolution at 1024 x 768 or higher
- CD-ROM Readable Drive
- Keyboard
- Mouse
- Microsoft® Internet Explorer® v 5.0 or higher (for online Help)
- Microsoft® Excel® 2000 or later (for PowerExport™ feature)

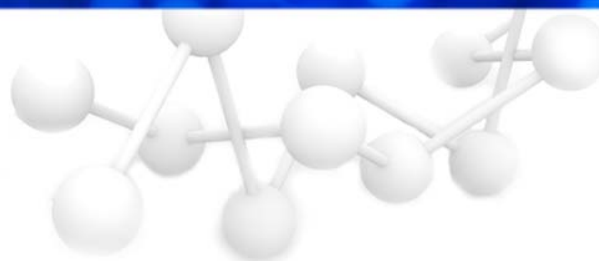
Gen5™

Editions Available

- Gen5 Secure: for 21 CFR Part 11 compliance
- Gen5: for all life science research needs
- Gen5 ELISA: for basic routine assays
- Gen5 Reader Control: for fast, easy data collection and export

Optional

- Gen5 Diagnostic Utility: for automated test plate measurements



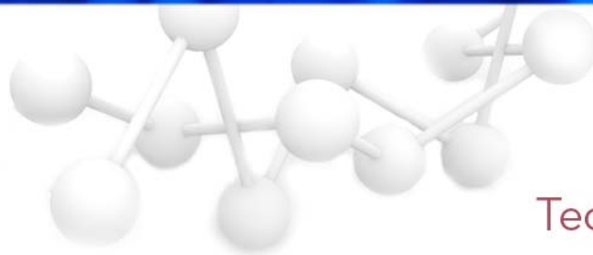
Gen5[™]

Detailed Product Differentiation Chart

	Gen5 [™] Secure	Gen5 [™]	Gen5 [™] ELISA	Gen5 [™] Reader Control
Readers Supported				
All current BioTek automated microplate readers Clarity (via OLE)	X	X	X	X
Ability to connect and run 2 readers in one session	X	X		
Plate Types Supported				
6-, 12-, 24-, 48-, 96-, 384-well flat and round bottom; pcr tube trays; 60-, 72-, 96-well Terasaki plates; Bio-Cell [™]	X	X	X	X
Plate types/dimensions can be added / edited in plate database	X	X	X	X
Protocol Options Available				
Standard Protocol	X	X	X	X
Calibrator Plate Protocol	X	X	X	
Multiple Plate Protocol	X	X	X	
Device Steps Supported				
Endpoint	X	X	X	X
Incubation Control	X	X	X	X
Shaking Control	X	X	X	X
Pathlength Correction	X	X	X	X
Partial Plate Reading	X	X	X	X
Kinetic measurement	X	X		X
Dispensing	X	X		X
Monitor Well Reading	X	X		X
Linear Scanning across well	X	X		X
Area Scanning	X	X		X

	Gen5™ Secure	Gen5™	Gen5™ ELISA	Gen5™ Reader Control
Multiple Plates per file	X	X		X
Spectral Scanning	X	X		X
Synchronized Read Modes	X	X		
Single Read step only			X	
User Interface Features				
Protocol Wizard for Protocol creation, customizable toolbar icons	X	X	X	
Extensive context-sensitive Help System	X	X	X	X
User-Configurable Data Views	X	X	X	X
Diagnostics Tests				
Reader System Test and Archive	X	X	X	X
Protocol / Data Security				
Multi-user password login (see protocol/data security)	X			
Admin Login option only		X		
Limited protection options		X		
Functions / features can be protected	X	X		
Configuration and results can be protected from changes	X	X		
Data Audit Trail records any changes or masking of data	X	X	X	
Protocol Audit Trail records any changes to protocols	X			
Data Records stamped with reading method and parameters	X	X	X	X
Electronic Signature of Data and Protocol files	X			
Report / Export Features				
Quick Export	X	X	X	X
File Export	X	X	X	X
Power Export	X	X		
Plate Layout				
Fully customizable well identifiers per protocol	X	X	X	
Sample Identification				
Manual Entry/Barcode Entry Sample ID's	X	X	X	
Sample Name Import from Text File	X	X	X	
Sample Name List or Plate printable	X	X	X	

	Gen5™ Secure	Gen5™	Gen5™ ELISA	Gen5™ Reader Control
Change / Mask / Create Data				
Data can be masked, changed or created manually	X	X	X	
Data Audit Trail tracks changes	X	X	X	
Curve Fit Types				
Linear, polynomial, point to point, 4-parameter	X	X	X	
Y-Axis Intercept (appropriate curve types)	X	X	X	
Multiple Std curves can be created	X	X	X	
Calibrator Plates Available	X	X	X	
Data Reduction & Analysis				
Multiple Levels of Formulas	X	X	X	
Multiple Filter Sets	X	X	X	
Max V or Mean V	X	X		
Onset OD	X	X		
Mean/Min Max OD	X	X		
Integral Calculation (kinetics, linear scan, spectrum scan)	X	X		
Multiple kinetic data sets can be evaluated at the same time	X	X		
Selectable Units for kinetic reactions	X	X		
Lag Time Calculation with Max V	X	X		
Kinetic Zoom on multiple wells to view reactions in real time	X	X		
Cutoff Calculation				
Yes	X	X	X	
Validation				
Multiple Validation criteria definable	X	X	X	



Gen5[™]

System Requirements

- Windows XP or Windows 2000 (Professional Editions)
- Pentium III-Class PC (or compatible) processor (500 MHz or higher)
- 512 MB RAM or higher
- 2 GB Hard Drive space or higher
- Designed for XGA Resolution at 1024 x 768 or higher
- CD-ROM Readable Drive
- Keyboard
- Mouse
- Microsoft Internet Explorer v 5.0 or higher (for online Help)
- Microsoft Excel 2000 or later (for PowerExport[™] feature)