

Digital Gel Documentation System



GelDocMega shown with optional computer

GelDocMega 5 uses the latest 4.0 megapixel Nikon digital camera to provide a gel documentation system, which is very high resolution, flexible and excellent value for money. A true photoquality inkjet printer gives superb gel prints and documents up to A4. Gel image files can be quickly transferred to a computer by USB cable or CompactFlash card for analysis or printing. A range of gel analysis software options are available.

Standard features include:

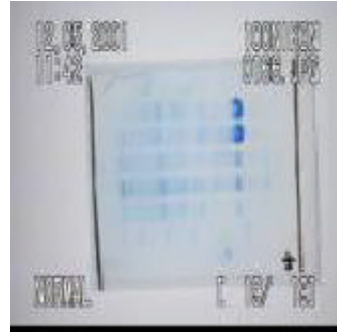
GelDocMega: Camera system

- Nikon digital camera with resolution of 2272 x 1704 pixels and 24-bit colour provides a superior high resolution gel image for DNA fingerprinting, gel analysis, archival and printing.
- The linear resolution is more than double that of many video camera based systems on the market. *Ask competitors about their resolution!*
- Camera colour TFT display and x4 zoom lens allows easy framing of gel and control of camera *without* use of computer.
- Includes EtBr filter. Typical exposure for EtBr gels is 1 second; up to 8 seconds exposure is possible for imaging faint bands. Filters for other stains are available.



Nikon digital camera

- The USB interface may also be used for image transfer to a computer directly over a USB cable.
- If a computer is situated next to the GelDocMega system, the live video picture from the camera may be displayed on the computer monitor instead of the camera display.
- Gel images may be transferred to a PC using the included CompactFlash card and reader. This is a small reusable RAM card (standard size 16Mb holding about 16 images), which is inserted into the included card reader and connected to a computer using a USB interface.
- The computer and printer may be located in another laboratory if required.
- Additional cards and readers may be purchased for convenience with multiple users.



Camera image window displayed on computer

GelDocMega: Darkroom & Transilluminator

Benchtop darkroom

- Door is safety-interlocked with transilluminator power to prevent UV exposure.
- Compact design occupies minimum bench space. Footprint 25 x 35cm, height 50cm.
- Full width door for easy access.
- Overhead white light illumination for easy location of gels.

Transilluminator

- Standard transilluminator is dual wavelength (312 & 365nm) with imaging filter size of 21x26cm. UV/white light converter screen for Coomassie Blue, Silver stains etc. is included as standard.
- Designed to perfectly fit darkroom.



GeIDocMega: Epson Photo Printer

The latest inkjet technology offers true photo quality output up to A4 size. This printer includes a CompactFlashcard reader so can print gel images without a computer if required.

The printer can also be used to print from all Windows applications so can print documents which include gel images and output from gel analysis programs such as dendrograms with photoquality gel track images. This is an advantage over video printer based systems. Various grades of photo quality paper are available including glossy and roll.

- Publication quality gel prints and documents up to A4 size.
- 6 colour inks and 2880 x 1440dpi printing.
- Economic running costs.
- Monochrome and colour printing.
- USB port.
- Integral CompactFlashcard reader



Epson Photo Inkjet Printer

GeIDocMega: Software

PhotoShop Elements and Nikon View software are included for:

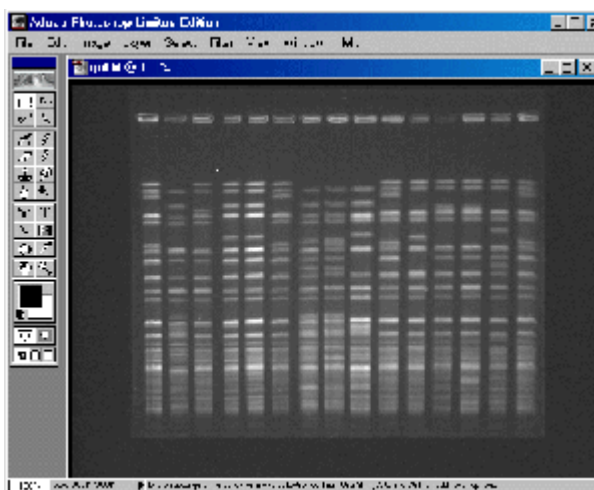
- gel image capture & transfer to PC
- enhancement
- annotation
- storage
- printing

Gel images may be output in a variety of standard file formats including TIFF for gel analysis by other software.

Gel Analysis Software Options:

For gel densitometry see TotalLab

For gel fingerprinting applications see GelCompar & BioNumerics



EtBr gel image in Photoshop Elements

Options

- Advanced darkroom with epi UV illumination
- Different transilluminator sizes/wavelengths; other filters;
- Extra CompactFlash card & reader for multiple user convenience
- TotalLab, GelCompar and BioNumerics gel analysis software options. Please contact us to discuss your particular applications.
- Computer to any required specification.